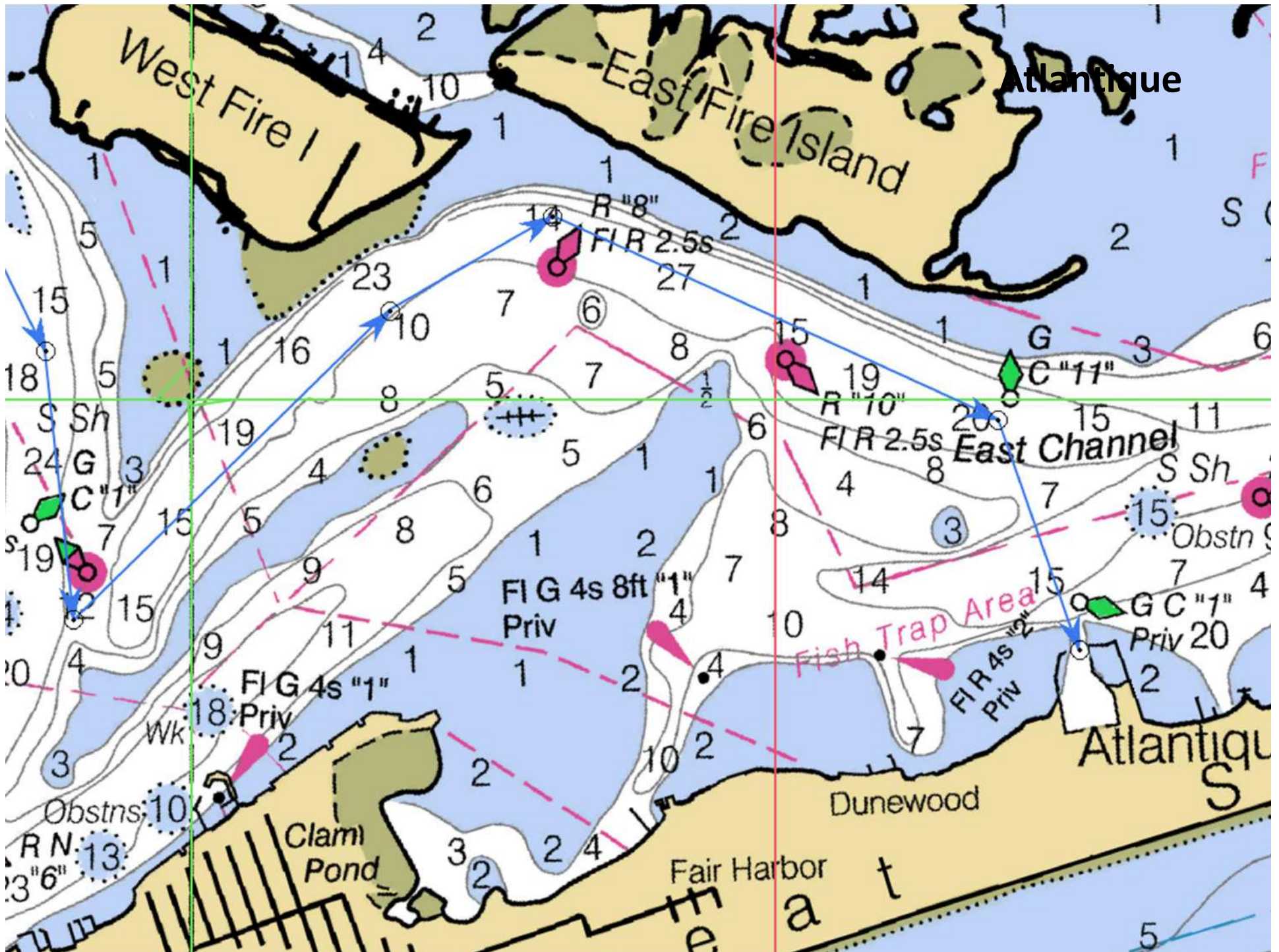


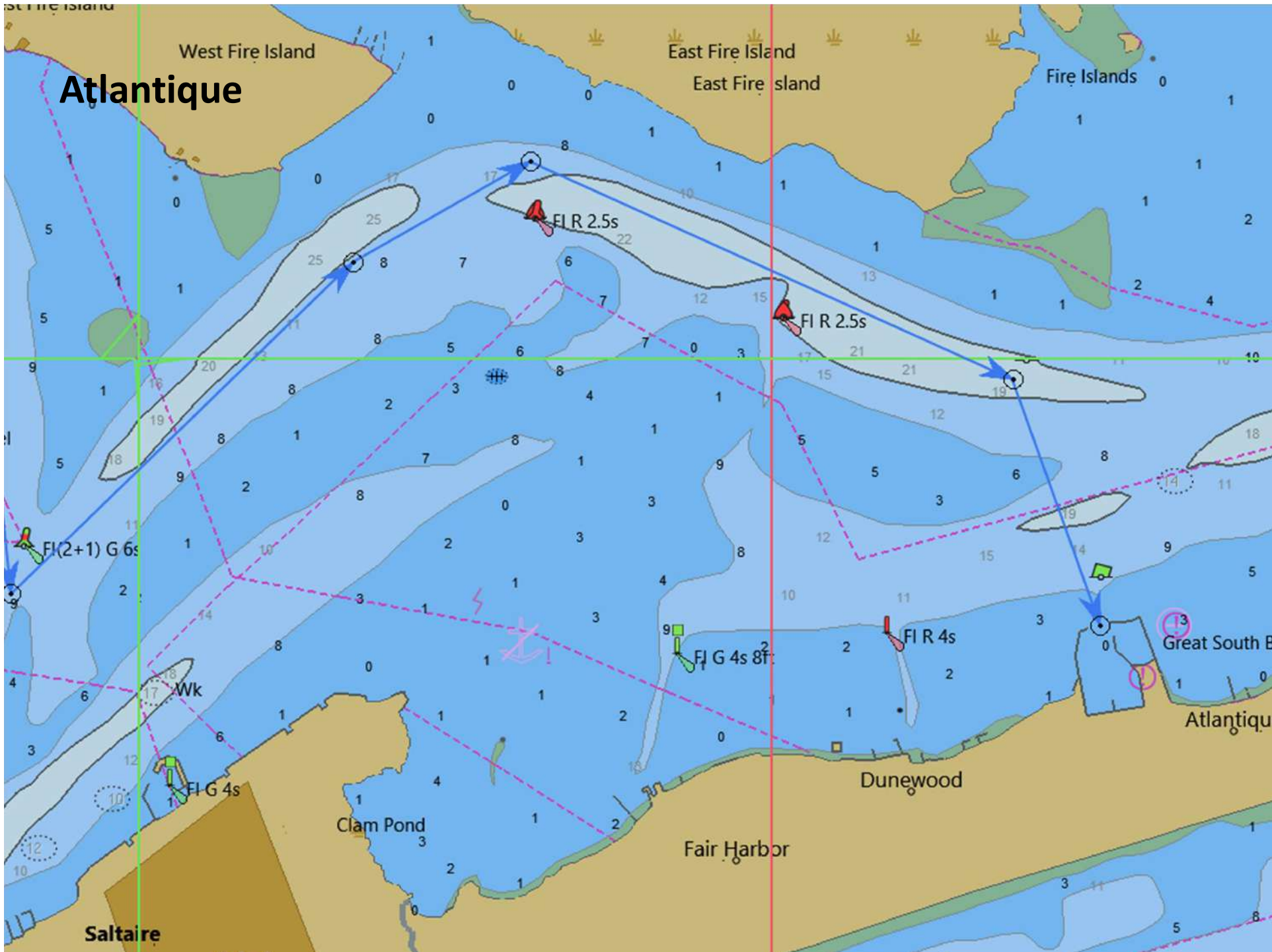
Atlantique - Marina

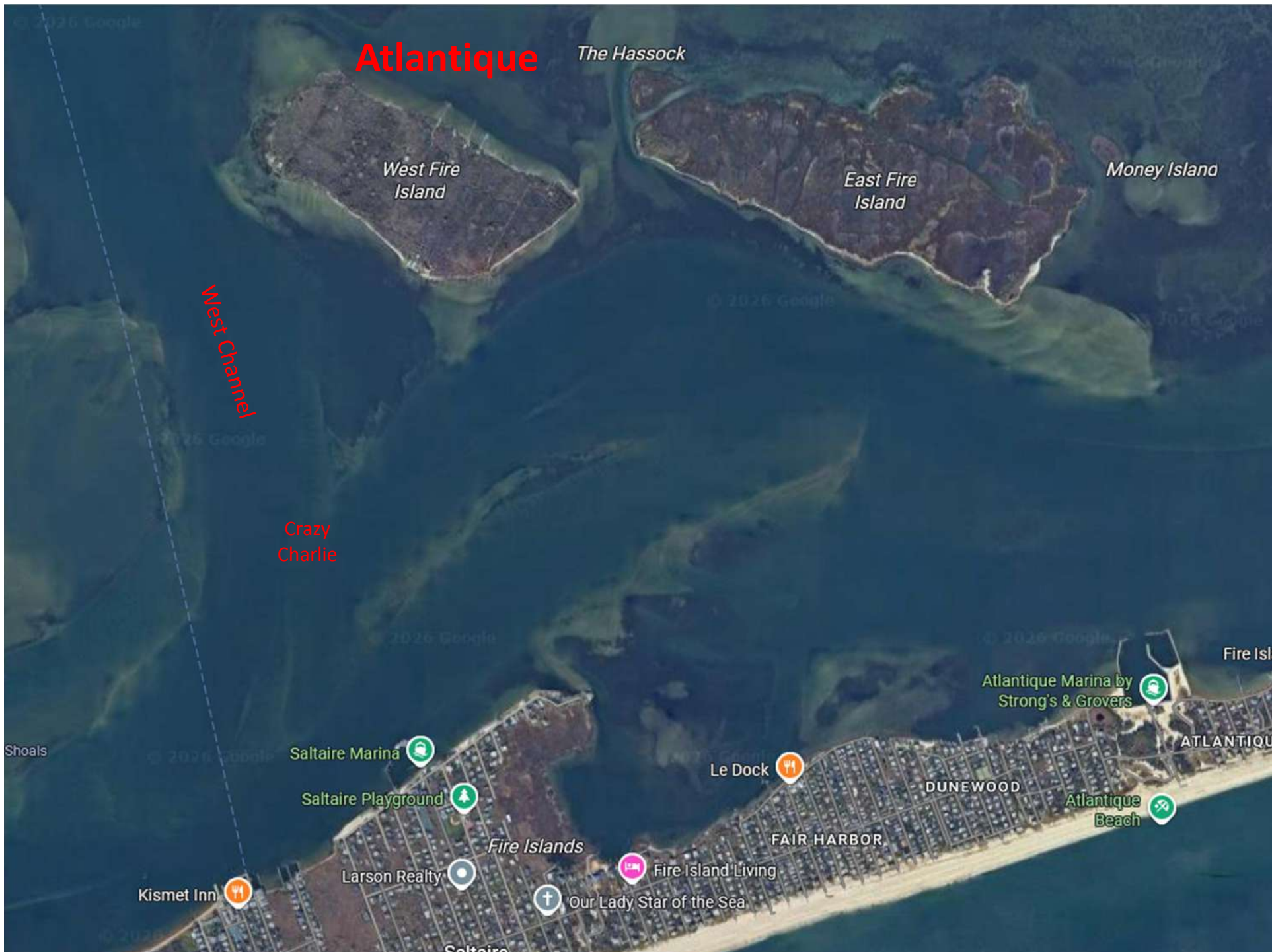
- Always check current charts and obtain local knowledge. Do not rely on this as a source for navigation!
- Islip Town marina that is now privately managed
- Islip Town resident rates require a sticker from Strong's Marine
 - Historically, SBCC events have been provided TOI rates with no sticker requirements. This is coordinated by the Fleet Captain
- Reserve on Dockwa
 - Mention part of SBCC
 - The “Cove” (East side) is calmer on the overnight
- Stay in the marked channels
- Call on Ch. 9 for slip assignment when close



Atlantique

Atlantique S





Atlantique



Atlantique

