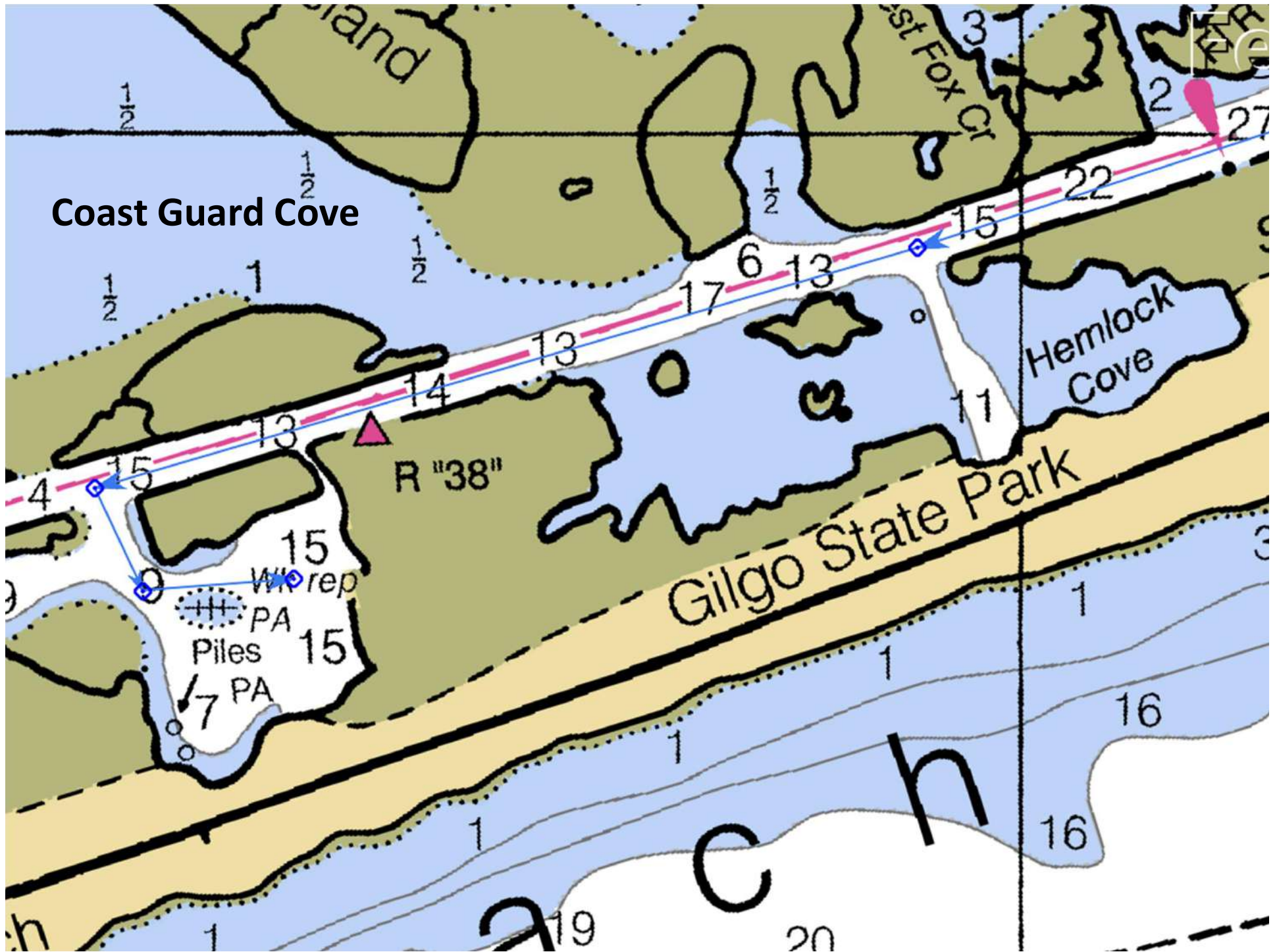
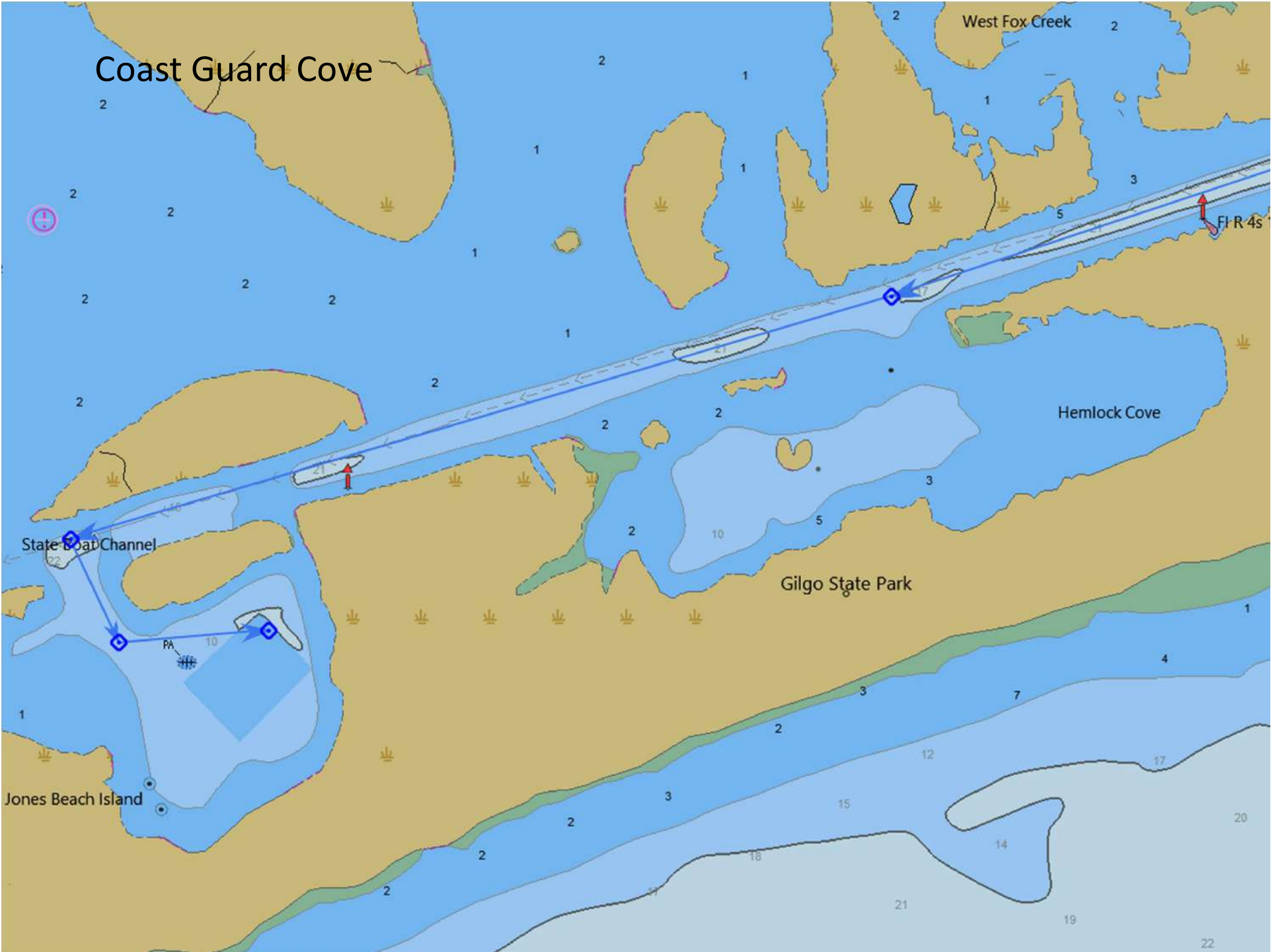


# Coast Guard Cove - Anchored

- Always check current charts and obtain local knowledge. Do not rely on this as a source for navigation!
- From the East: Follow the state channel, continue 0.25 nm past day mark R “38” to entrance.
- From the West: Follow the Amityville Cut south to the State Boat Channel, turn east and steam to day marker “35” continue for 0.5 nm to the entrance (40 37.600' N //073 23.2600' W)
- Well protected from boat traffic
- We anchor on the east side
- Good first rendezvous spot
- Depths vary, try to drop anchor in shallower area







# Coast Guard Cove



# Coast Guard Cove



Coast Guard Cove

Anchor This Area

Ocean Pkwy

Ocean Pkwy

Gilgo State Park 4x4

# Coast Guard Cove



# Coast Guard Cove

