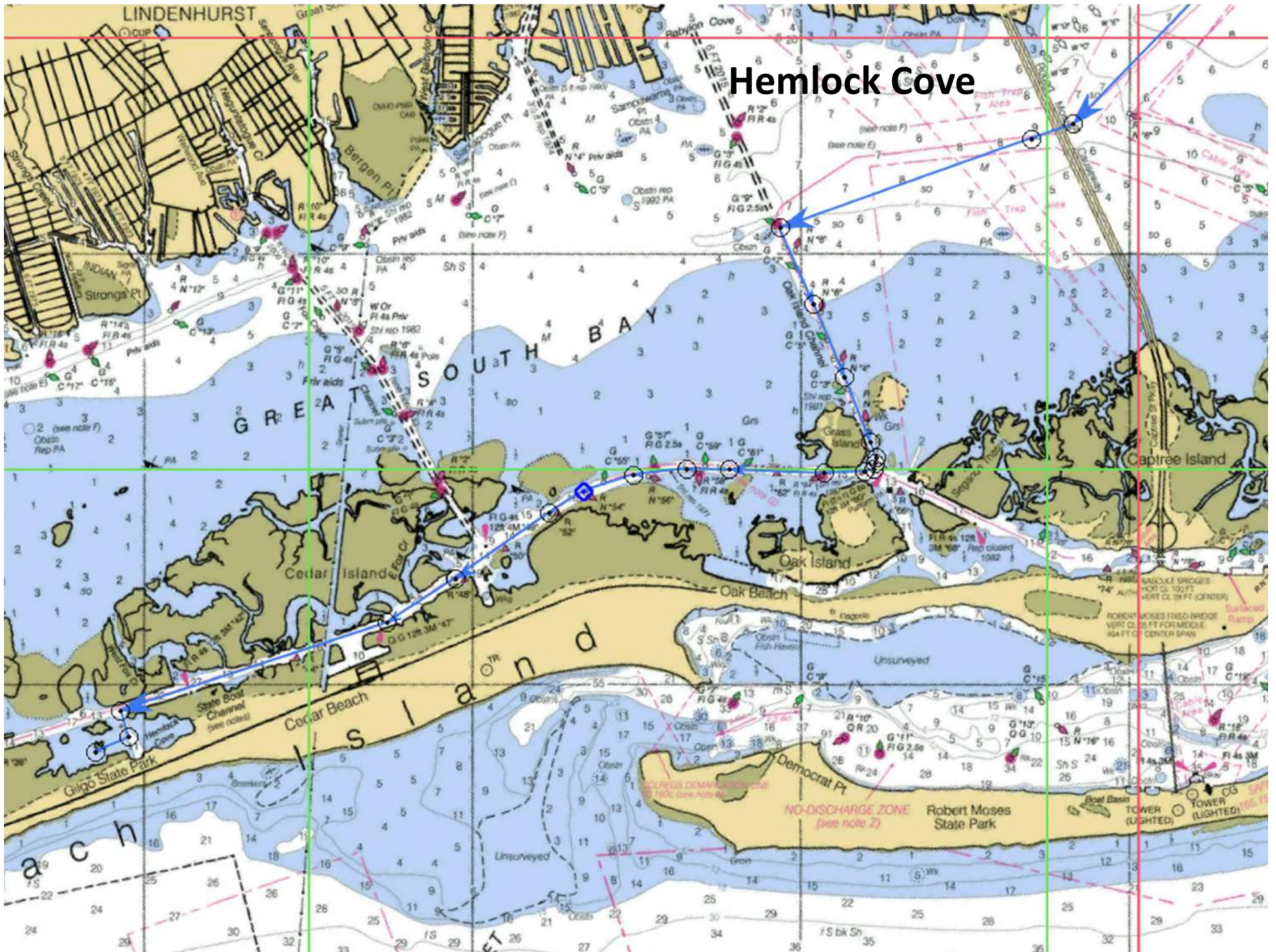


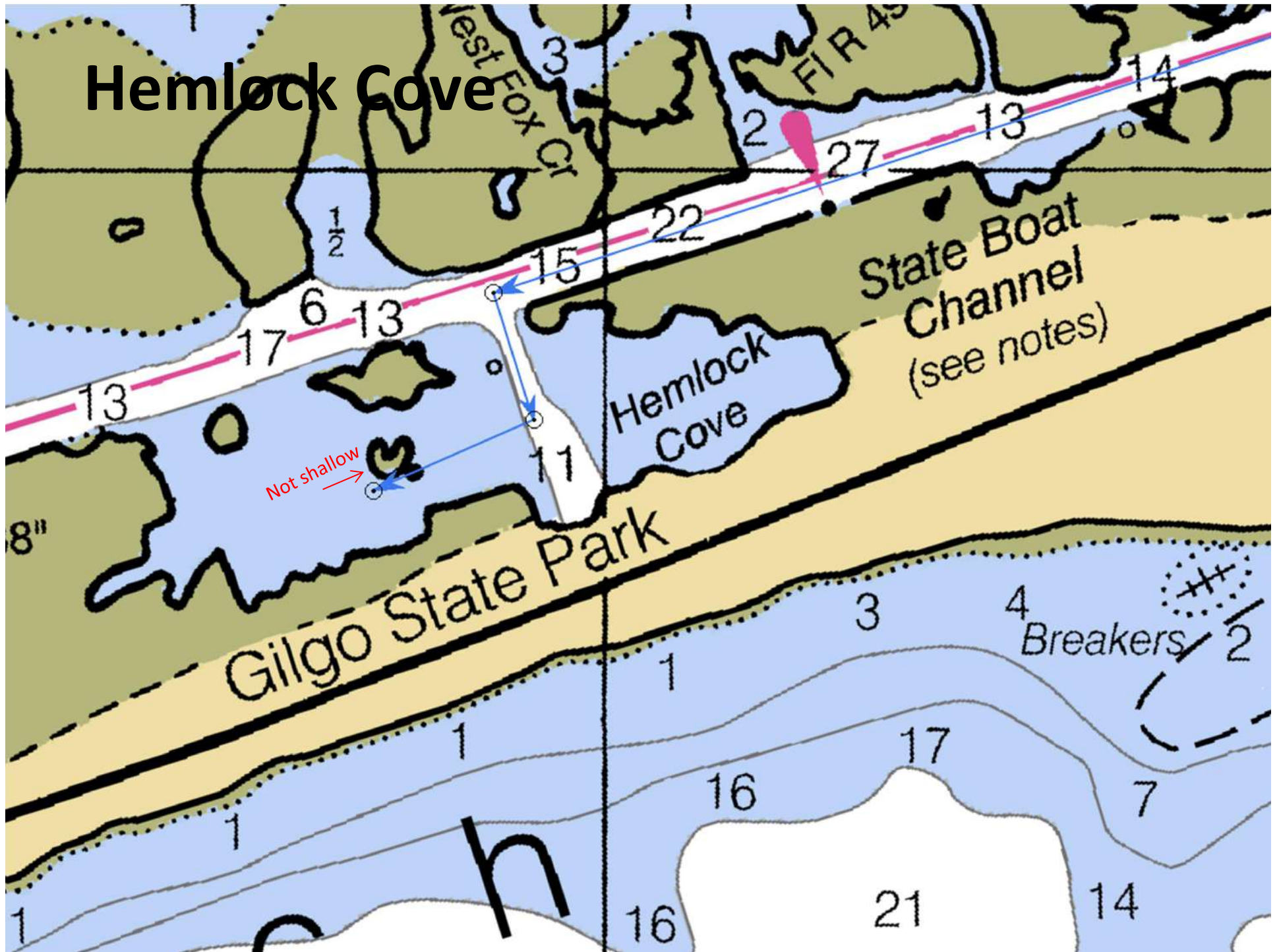
# Hemlock Cove - Anchor

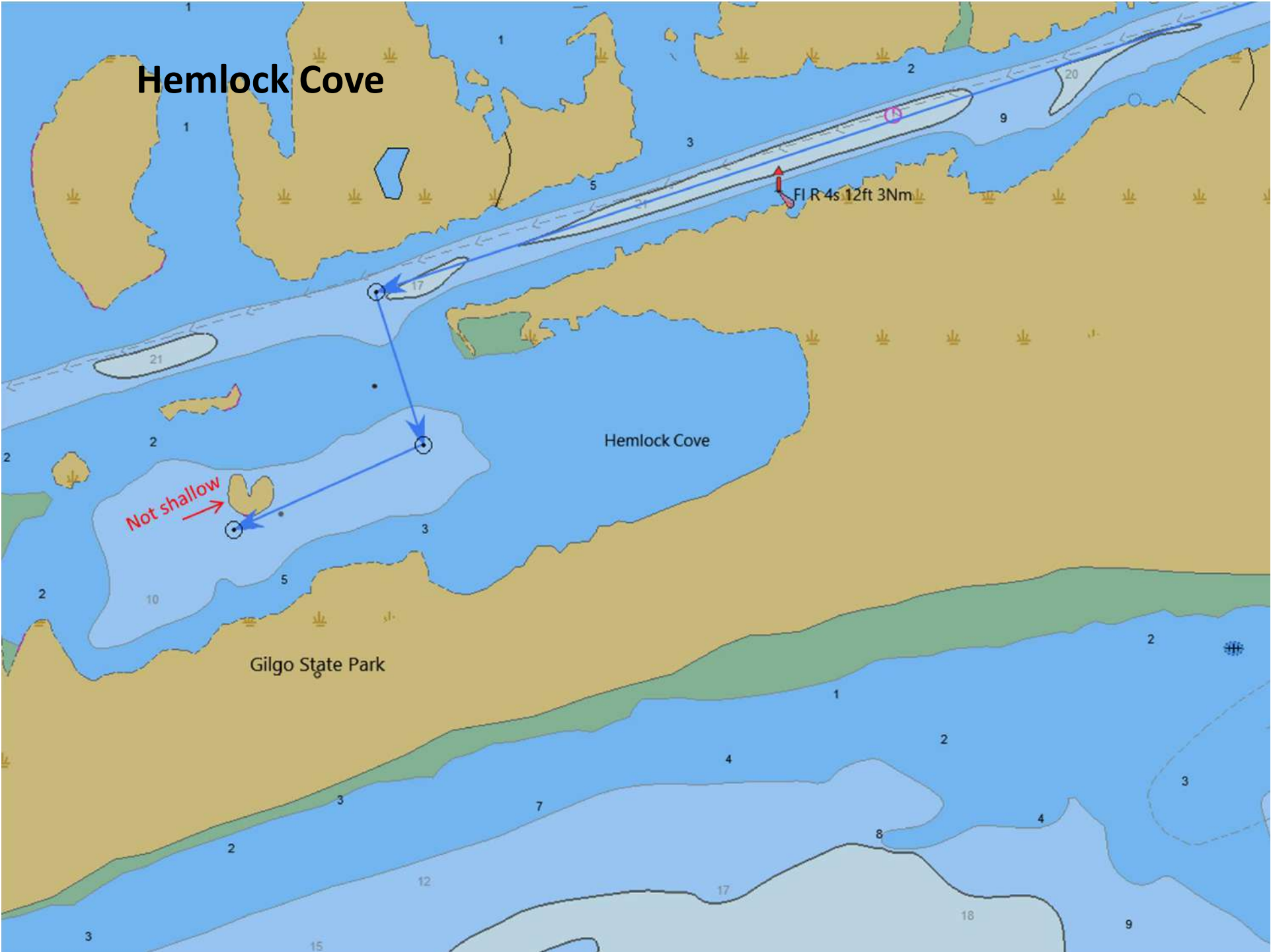
- Always check current charts and obtain local knowledge. Do not rely on this as a source for navigation!
- 0.3 nm west of red “42”
- 0.9 nm east of Coast Guard Cove
- Enter half way between the marsh on the east and pole to the west
- Proceed south of the pole, almost halfway from pole to shore, then turn east (starboard)
  - The area just south of the pole is shallow
- The shallow area shown on the chart in the center is not there
- Find shallower areas, avoid 30’ hole - scope and swing
- Powerboats to the east, we anchor to the west
- Good first rendezvous spot
- Can take dinghy to shore and walk to Cedar Beach (1 nm)
  - Jogging / bike paved trail
  - Live music at The Salt Shack
  - Watch for tide changes if leaving dinghy- set anchor/tie to shore

# Hemlock Cove



# Hemlock Cove





Hemlock Cove

Fl R 4s 12ft 3Nm

Not shallow

Hemlock Cove

Gilgo State Park

# Hemlock Cove



# Hemlock Cove

Pole  
Avoid- Shallow

Powerboats

Hemlock Cove

Anchor This Area

Land dink here



# Hemlock Cove



Pole