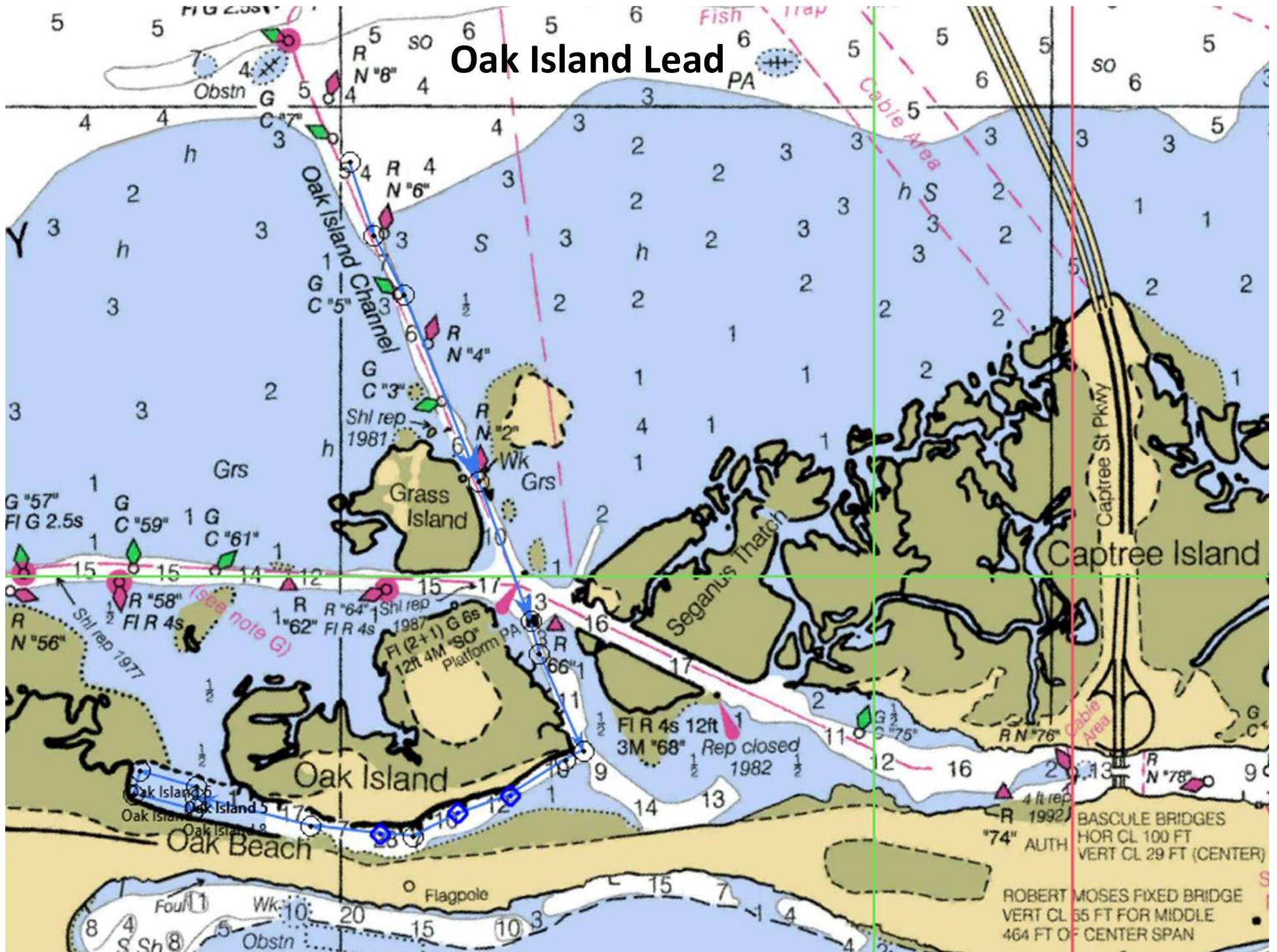


# Oak Island Lead - Anchor

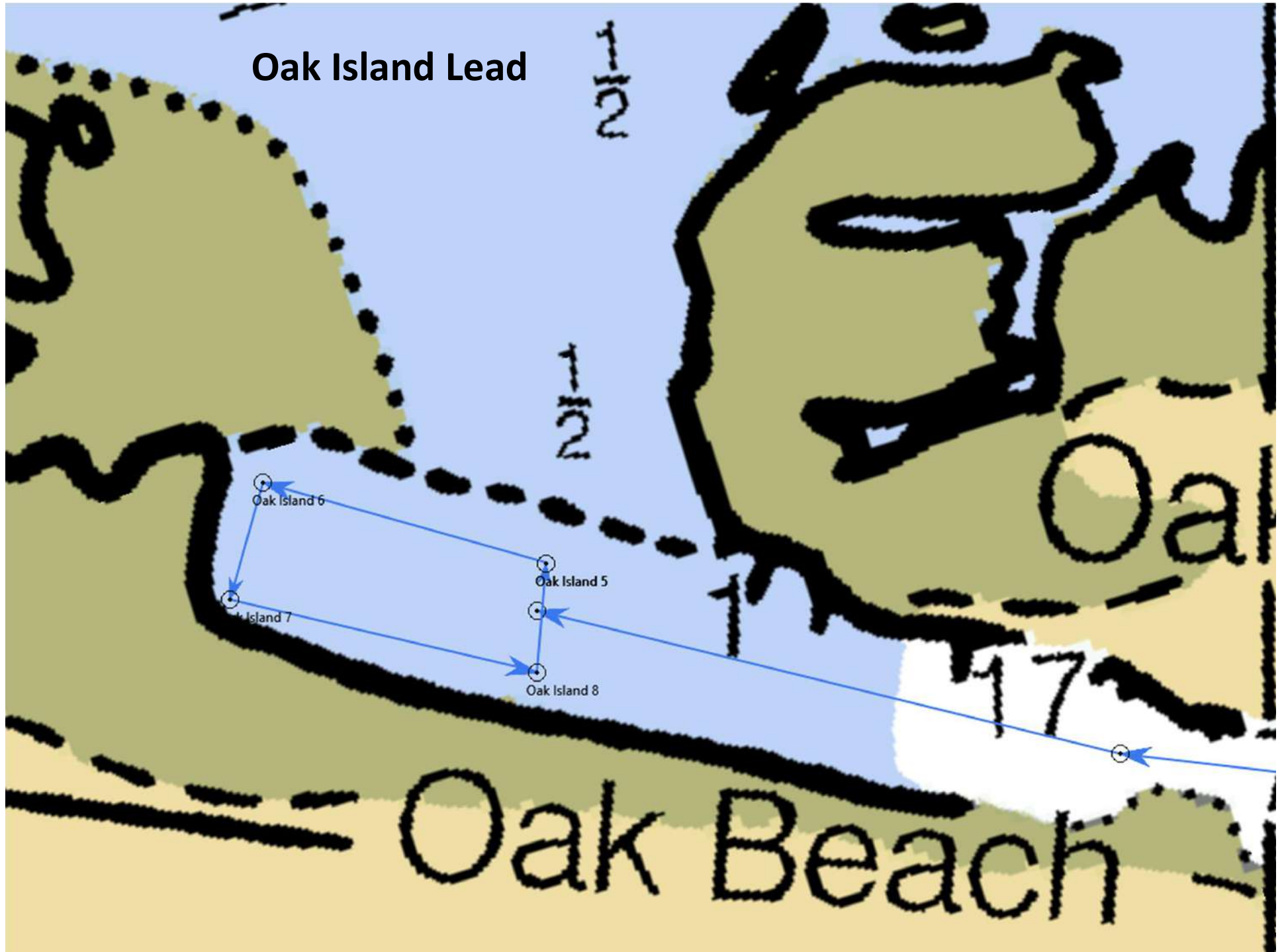
- Always check current charts and obtain local knowledge. Do not rely on this as a source for navigation!
- Beautiful area, some say the best on the GSB
- The entry can be challenging
- The area where you turn from south to west is shallowest
  - Top half of the tide
  - Drafts over 4'-6" may be pushing mud to make this turn
- Be careful during north or shifting winds
- This may not be ideal for your first few RVs

# Oak Island Lead

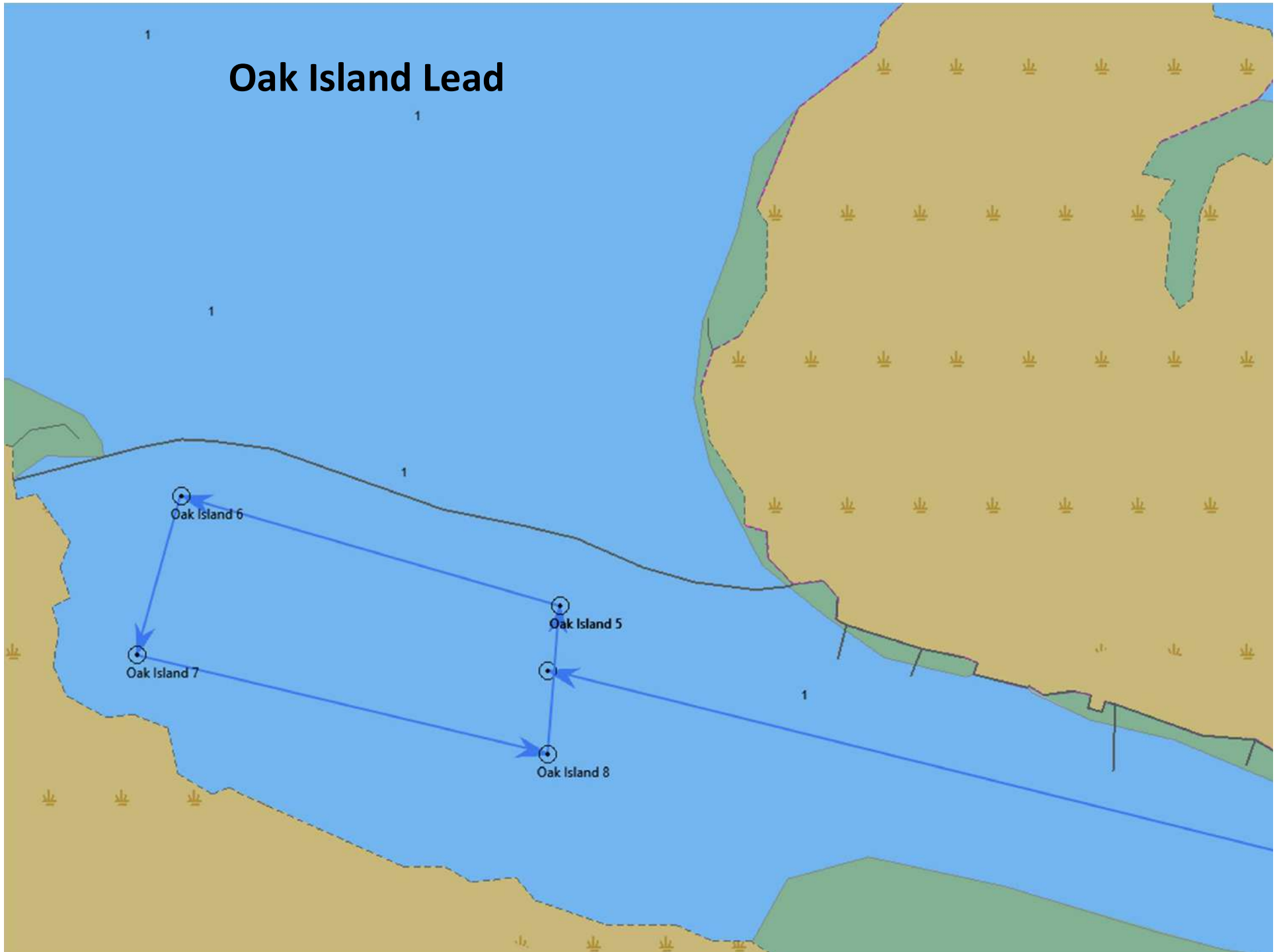




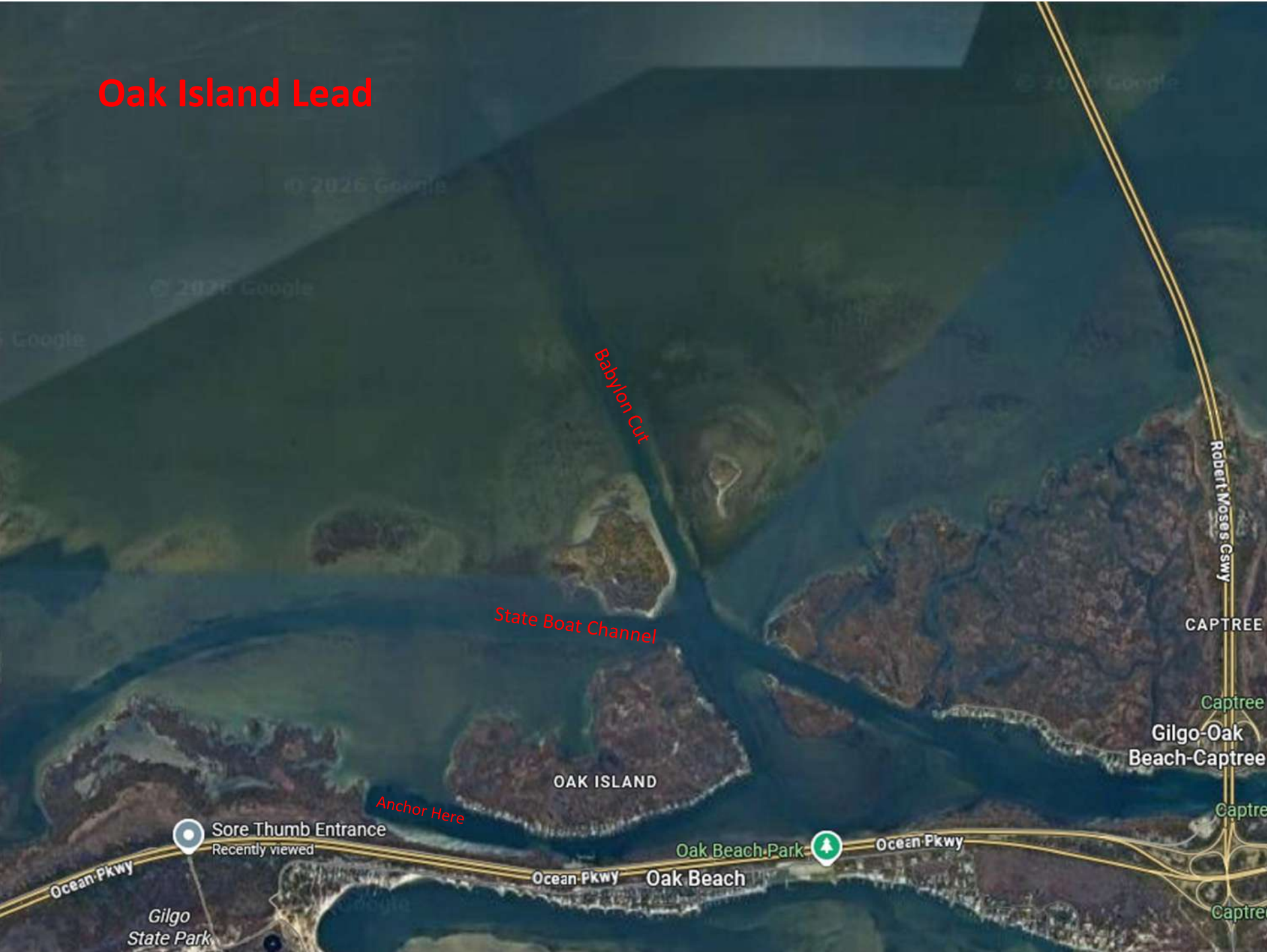
# Oak Island Lead



# Oak Island Lead



# Oak Island Lead



# Oak Island Lead

State Boat Channel

Babylon Cut

Wood Platform

Shallowest at this turn

Oak Island

Stay close to the north shore



# Oak Island Lead

Anchor This Area  
(west of the houses)

Avoid Osprey  
Nesting Area

Coastal Greenway

Ocean Blvd



# Oak Island Lead



# Oak Island Lead

