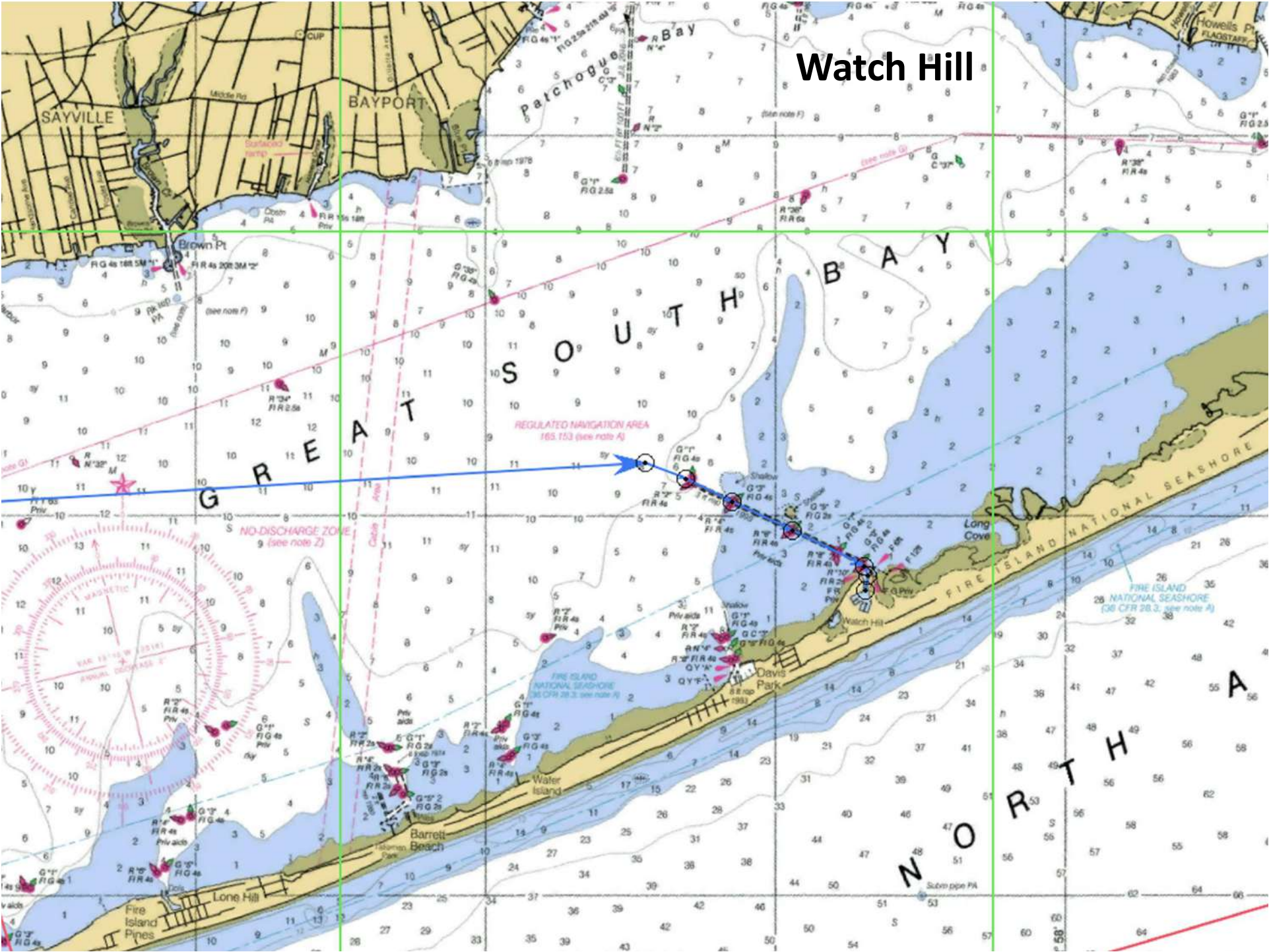
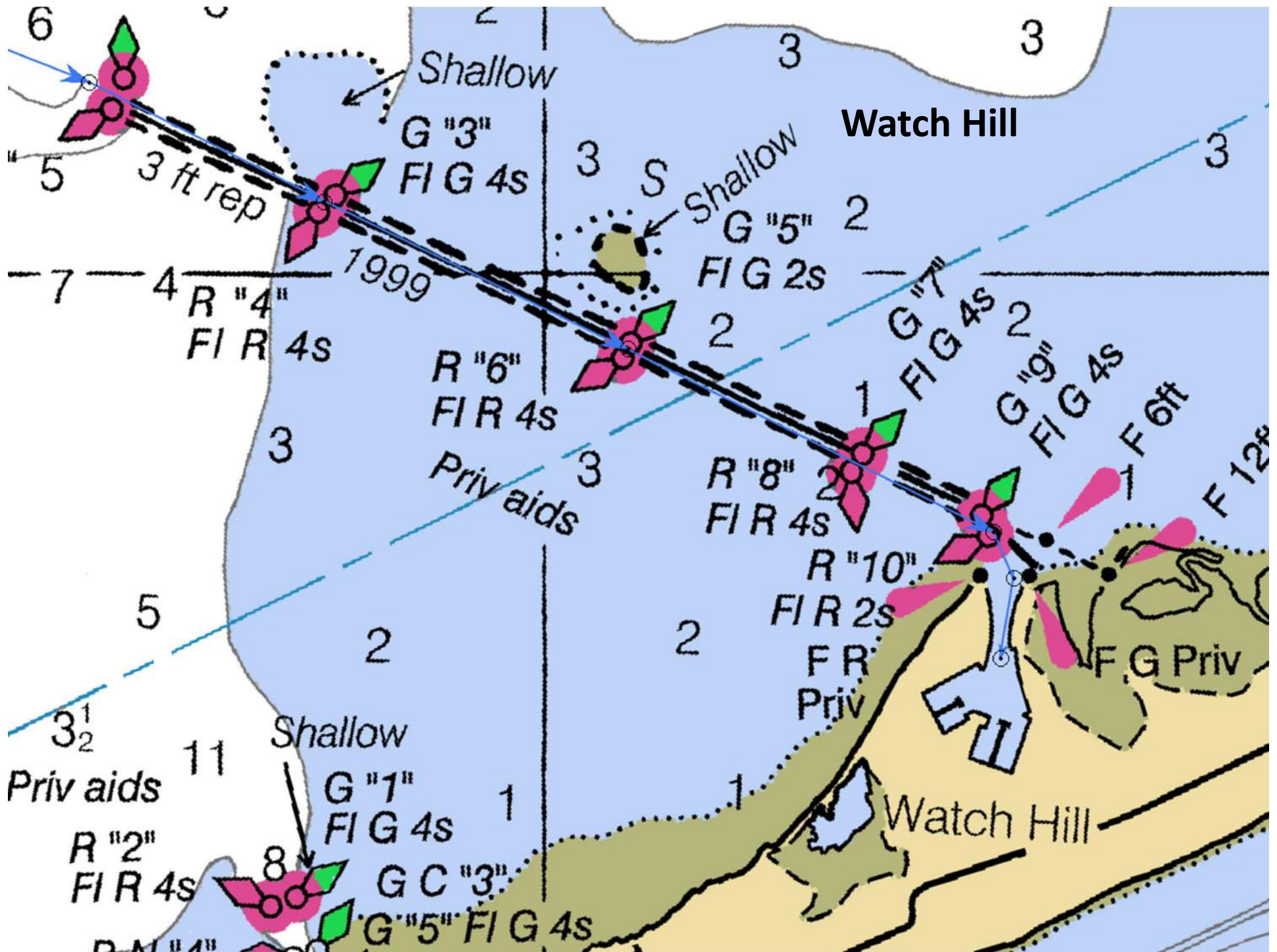


Watch Hill - Marina

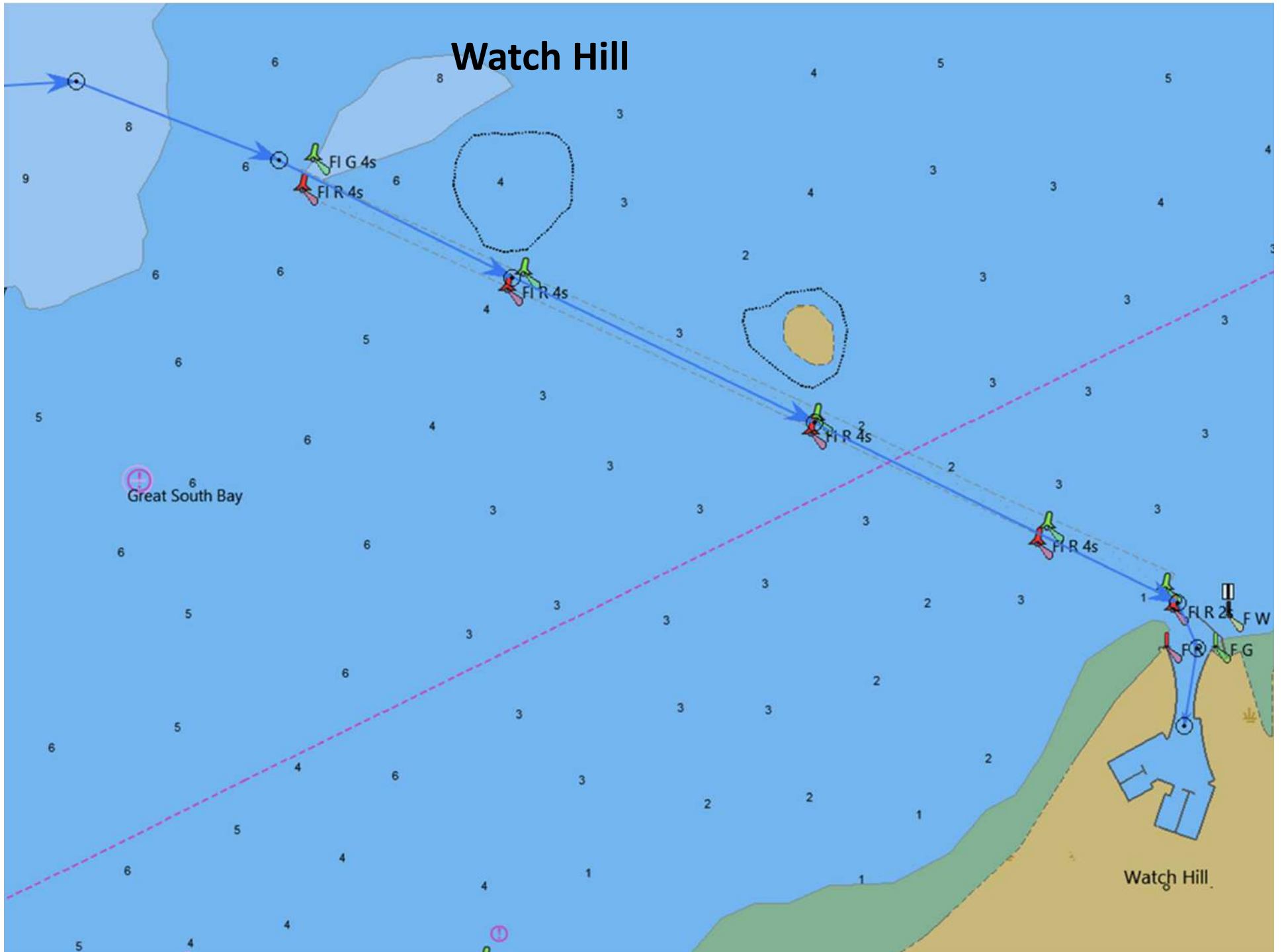
- Always check current charts and obtain local knowledge. Do not rely on this as a source for navigation!
- Reserve on Dockwa
 - Mention part of SBCC group
- Long narrow channel - stay in center
- Check ferry schedule and do not transit channel with the ferry
- Deeper drafts will need top half of tide
- Shoaling in channel early in season
 - The ferries help clear this out
- New restaurant opening Spring 2026
- Pump out station hasn't worked in years

Watch Hill



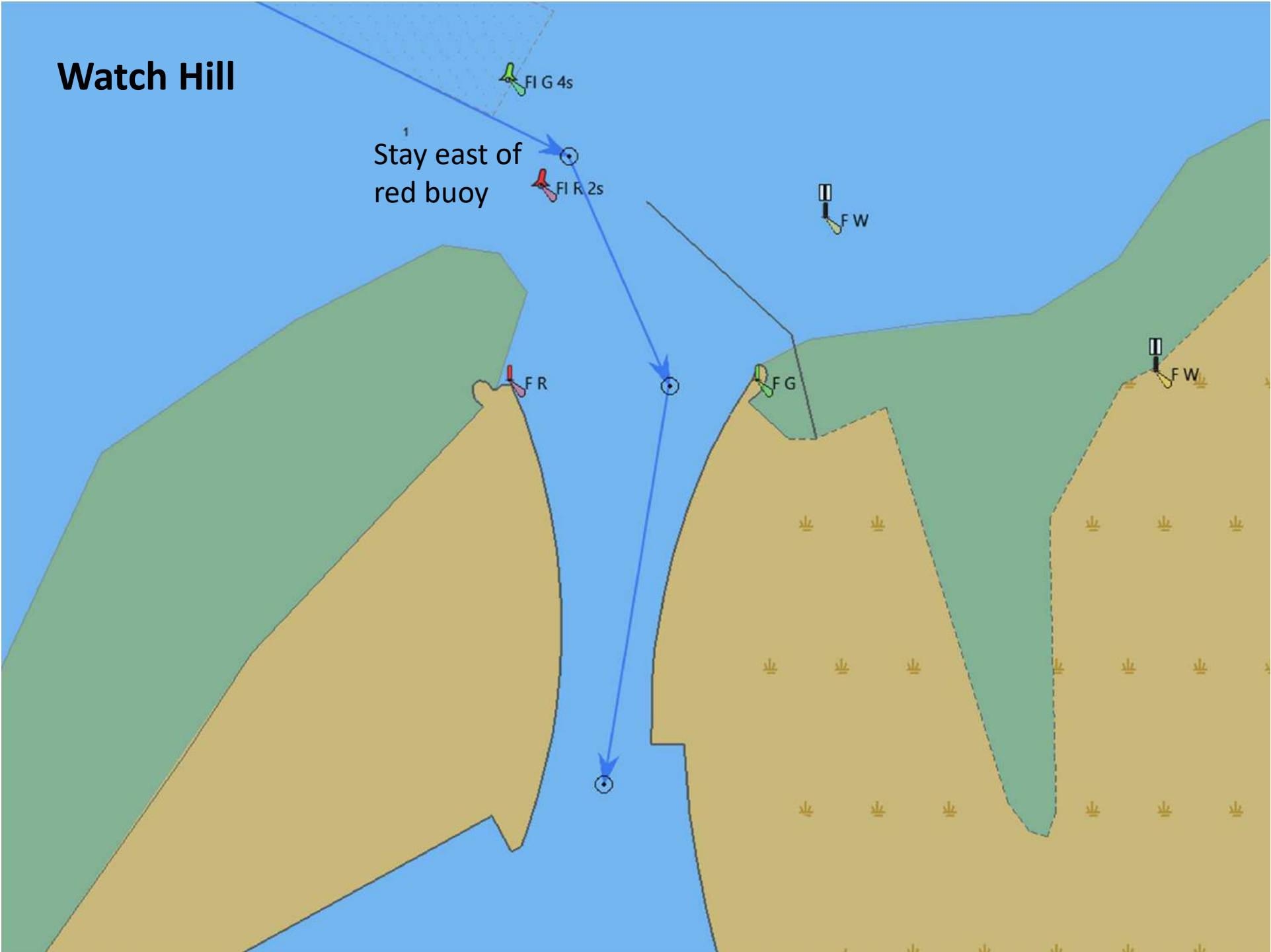


Watch Hill



Watch Hill

1
Stay east of
red buoy



Watch Hill

Land's End
Waterfront Catering

© 2026 Google

© 2026 Google

© 2026 Google

Watch Hill Fire Island
Campground & Safari...
Temporarily closed

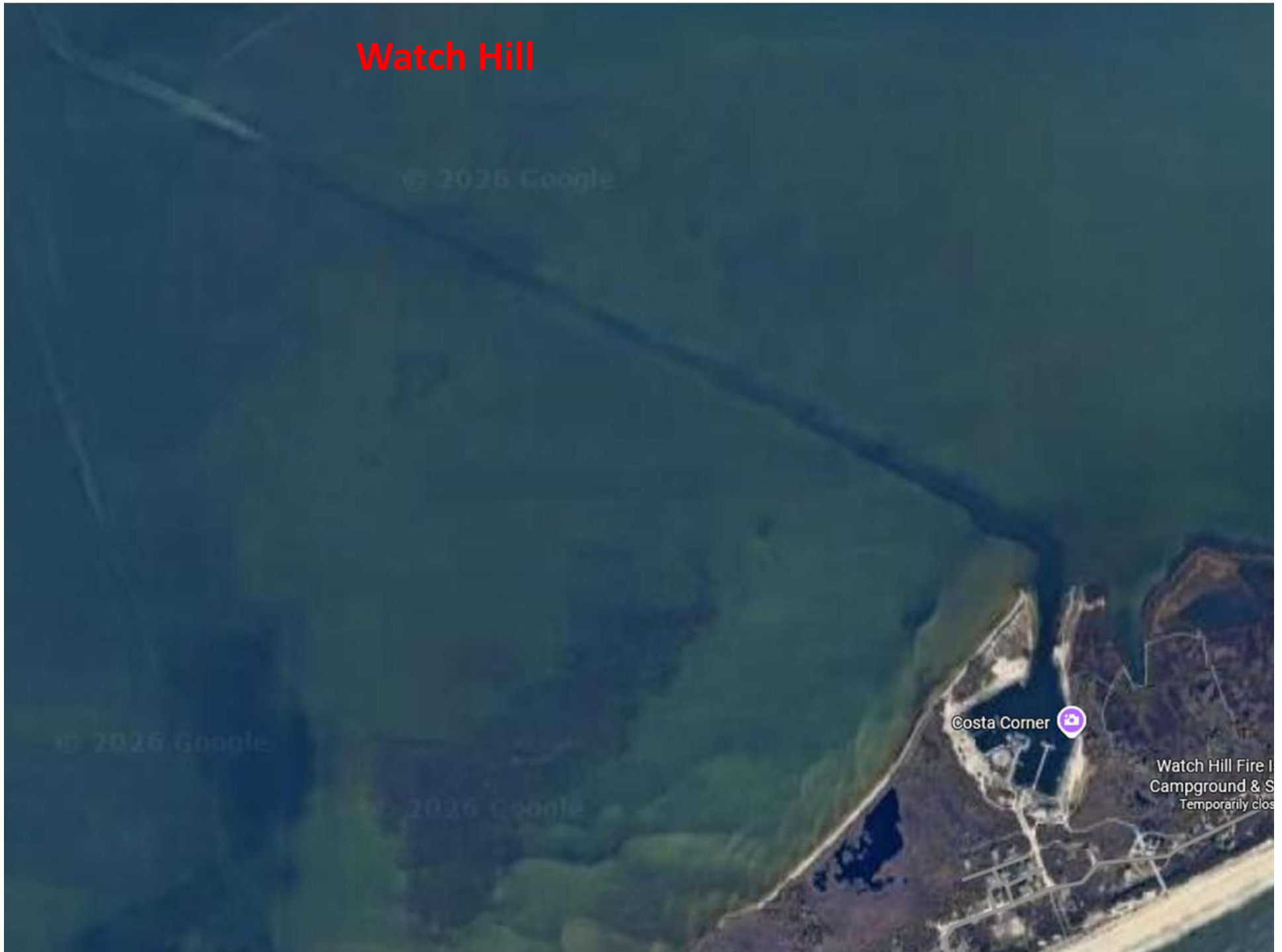
*Fire Island
National
Seashore*

WATER ISLAND

Barrett
Beach Park

Google Maps

Watch Hill



Costa Corner

Watch Hill Fire I
Campground & S
Temporarily clos

Watch Hill

↑
North

Broken
Pump Out

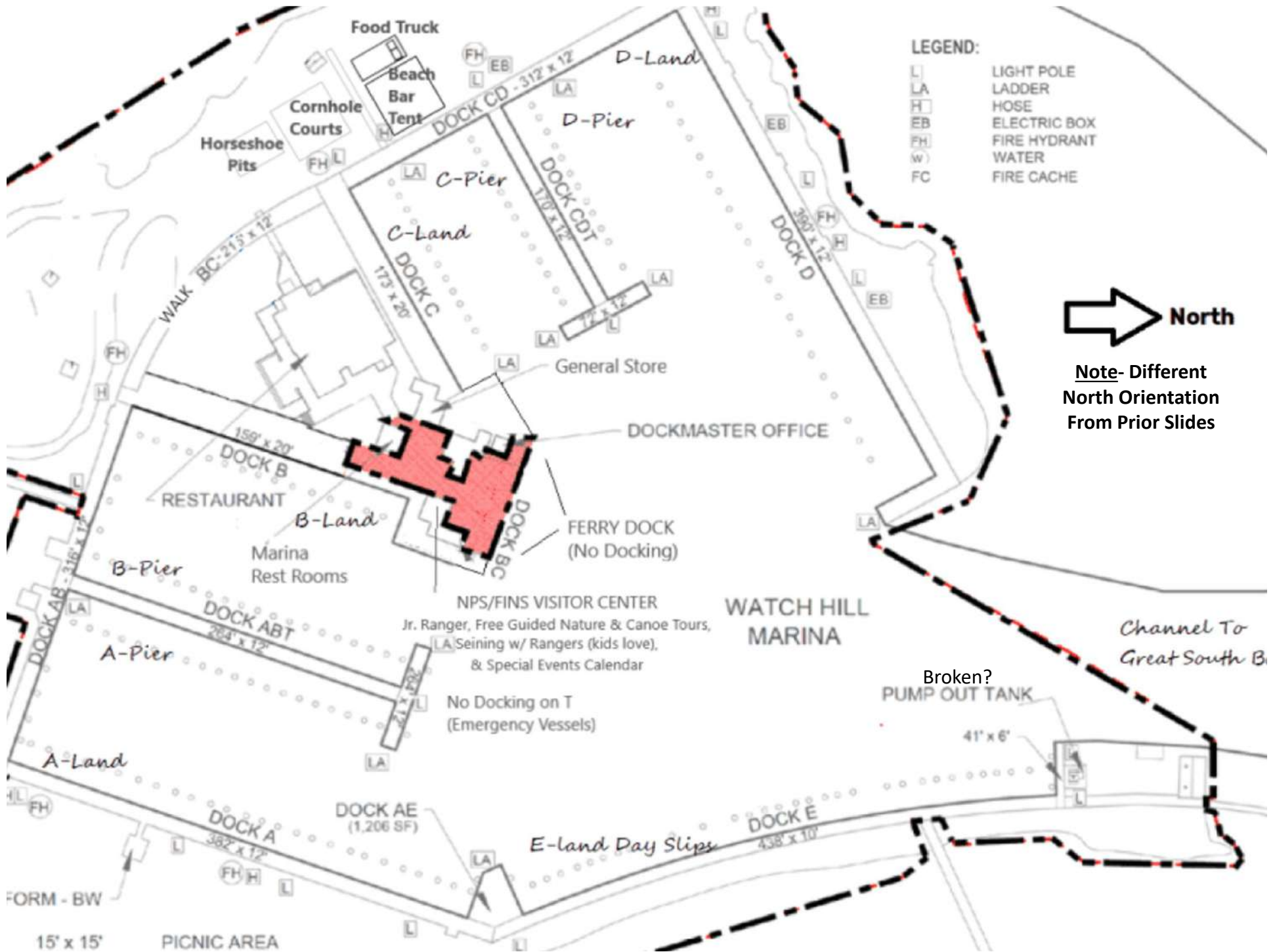
Watch Hill Visitor Center

Costa Corner



Watch Hill





Note- Different North Orientation From Prior Slides

WATCH HILL MARINA

Channel To Great South B.

Broken? PUMP OUT TANK

41' x 6'

FORM - BW

15' x 15'

PICNIC AREA

No Docking on T (Emergency Vessels)

NPS/FINS VISITOR CENTER
Jr. Ranger, Free Guided Nature & Canoe Tours, Seining w/ Rangers (kids love), & Special Events Calendar

E-land Day Slips

DOCK AE (1,206 SF)

DOCK A 382' x 12'

DOCK E 438' x 10'

DOCK ABT 264' x 12'

A-Pier

RESTAURANT

Marina Rest Rooms

B-Land

B-Pier

FERRY DOCK (No Docking)

DOCKMASTER OFFICE

General Store

C-Land

C-Pier

D-Pier

D-Land

Food Truck

Beach Bar Tent

Cornhole Courts

Horseshoe Pits

WALK BC-215' x 12'

DOCK C 173' x 20'

DOCK CDT 110' x 12'

DOCK CD - 312' x 12'

DOCK D 380' x 12'

DOCK B 159' x 20'

DOCK AB 316' x 12'

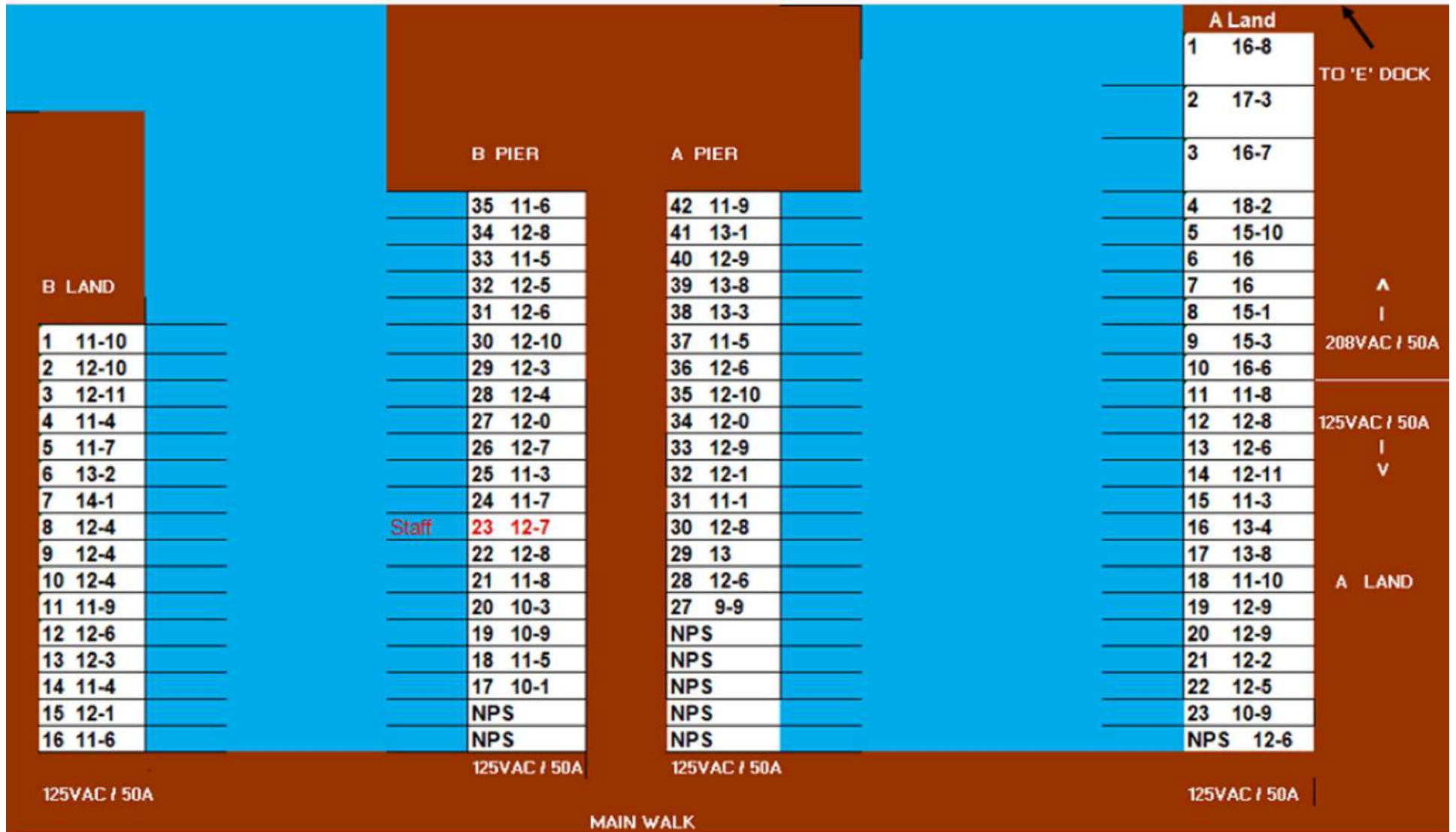
DOCK ABT 264' x 12'

DOCK AE (1,206 SF)

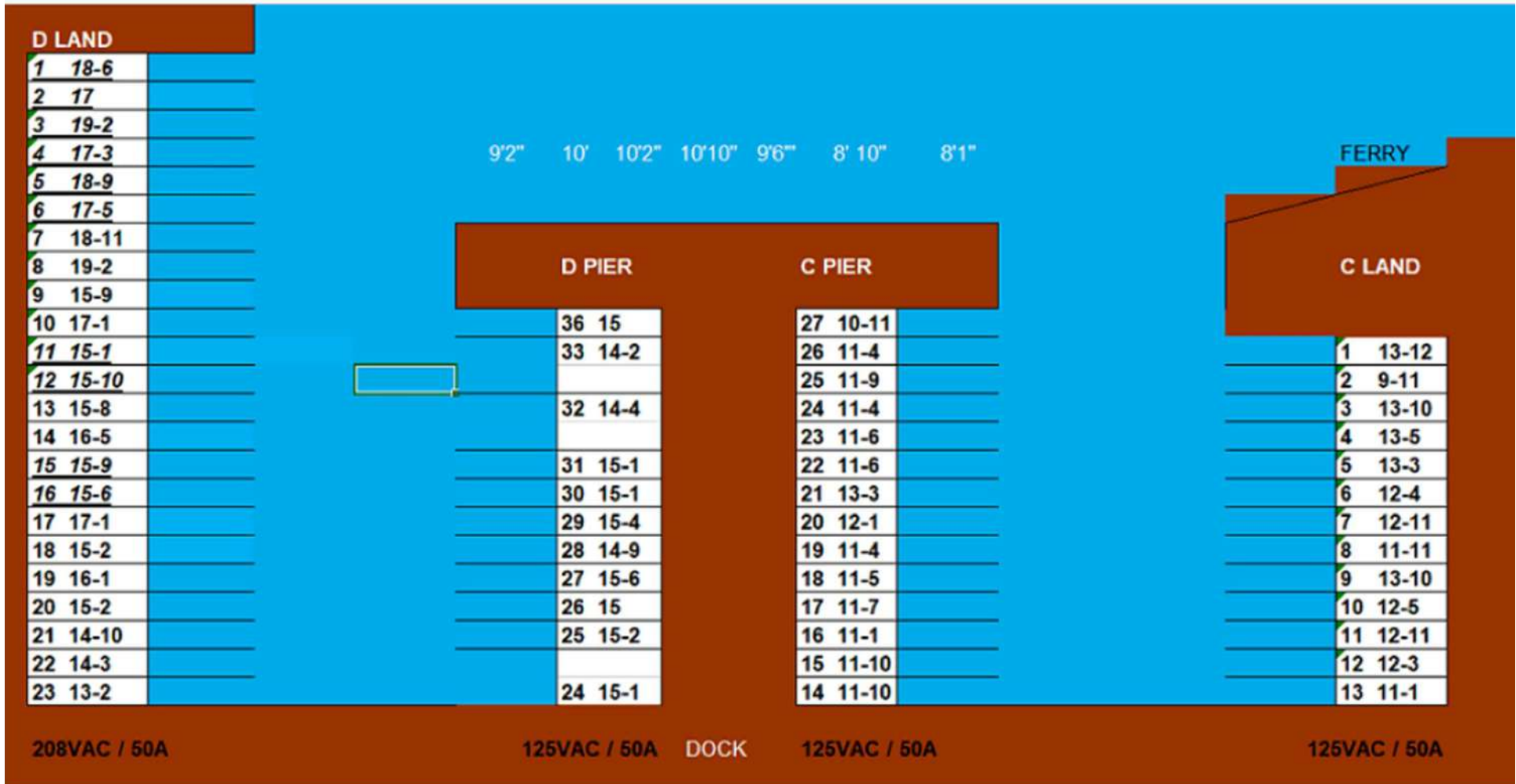
DOCK A 382' x 12'

DOCK E 438' x 10'

Watch Hill- Basin A & B



Watch Hill- Basins C & D



208VAC / 50A

125VAC / 50A DOCK

125VAC / 50A

125VAC / 50A