

**Notice of Race
&
Sailing Instructions**



SOUTH BAY CRUISING CLUB

**Discoverer's Invitational Race to Atlantique
&
Club Rendezvous
Saturday, October 7, 2017
11:00 start time**

1. RULES:

1.1 The Race shall be governed by the US Sailing's *Racing Rules of Sailing* (RRS)

1.2 This is a non-spinnaker event.

2. REGISTRATION:

Registration shall be made by sending an e-mail to Marty O'Connell at marty1227@kb5gang.com Please include your yacht's name, sail number, handicap, and expected number of crew. If you do not have an assigned handicap please contact Jim Reichel at sailorchce@aol.com. If this is the only regatta you plan on entering, Jim has notified me that he will assign you a handicap without having to complete the "long form".

3. CLASS FLAG:

The Class Flag is BLUE signifying this is a non-spinnaker event. There are no other classes.

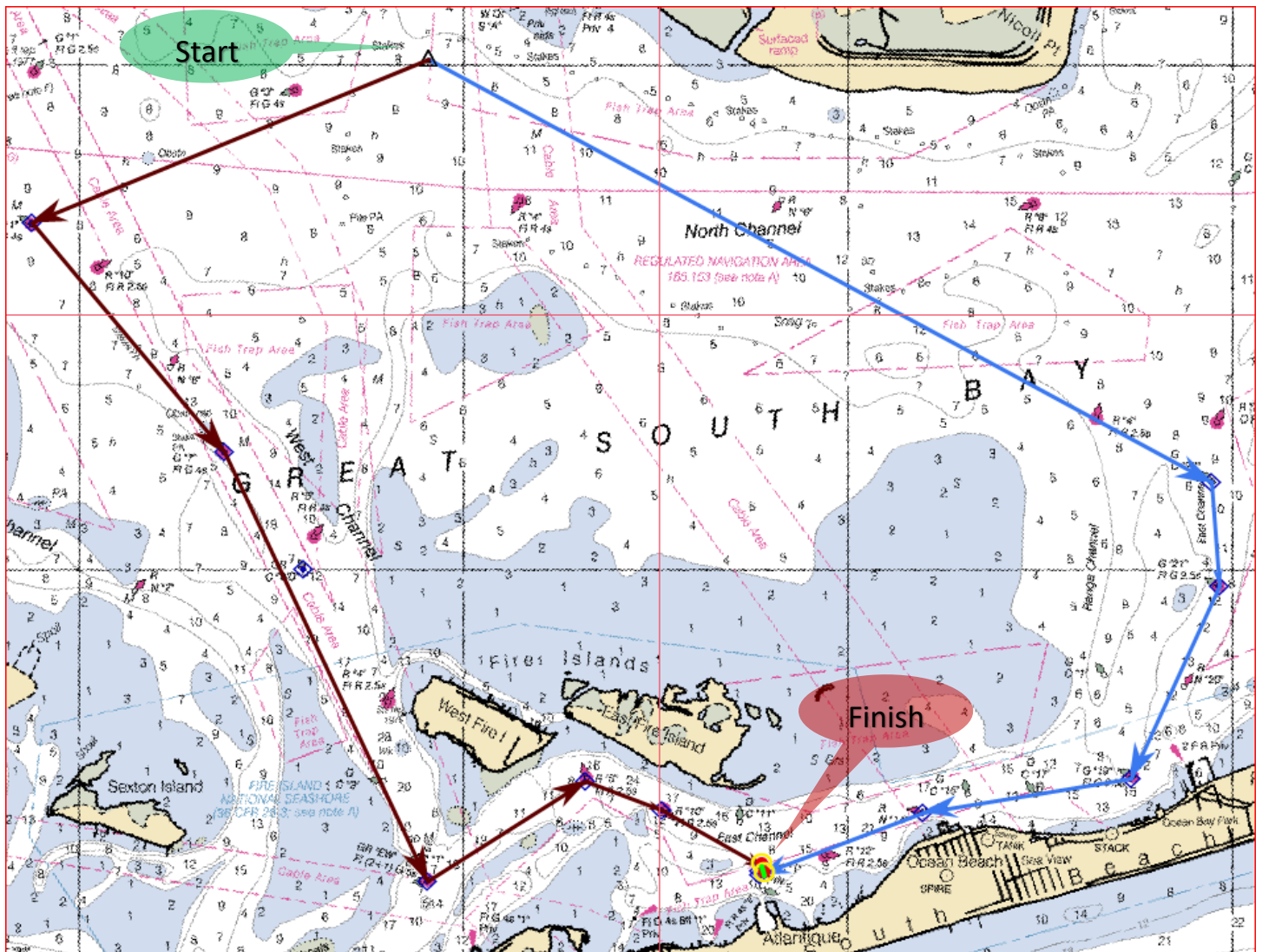
4. RACE COURSES

There are two courses: West and East, illustrated below. The length of either course is 6.3 nm. Participants are free to choose either course.

West Course: Start*, #11 (Port), #7 (Starboard), EW (Port), #8 (Starboard), #10 (Starboard) and finish between committee boat and 'X' mark ('X' mark to Starboard)

East Course: Start*, #23 (Starboard), #21 (Starboard), #19 (Starboard), #14 (Port), Finish between committee boat and 'X' mark ('X' mark to Starboard)

* 40 42.00 N 073 12.20 W (~.5nm ENE of #3 off Bayberry Point)



5. SIGNALS MADE ABOARD RACE COMMITTEE

5.1 (start) Race Committee shall be on station 0.5 nm ENE of #3 Light off Bayberry Point

- Prior to the start of the race she shall be flying an Orange Line Flag and a traditional 'Race Committee' flag.
- If there is a 'LIMA' flag flying, this signifies to come within hail.
- At approximately 5 minutes to the hour a Blue Class Flag will be raised indicating the start of the start sequence. The race will commence in exactly 5 minutes.

5.2 (finish) Race Committee shall be on station off northeast corner of the Atlantic dock

- The Committee boat will flying an Orange Line Flag and a traditional 'Race Committee' flag.
- All boats finish heading east to west taking the 'X' mark to Starboard.
- The Race Committee will acknowledge each finish.

5.3 (alternate finish) In the event the committee boat is not on station, the finish line is a straight line between the, northeast corner of the Atlantic dock and a sighting to the eastern most end of East Fire Island. Yachts sailing the 'West Course' need to be traveling from east to west to break this line. Note your finish position (ie: who is ahead and who is astern).




6. THE START

6.1 The starting line will be between an orange buoy set at 40 42.00 N 073 12.20 W (~.5nm ENE of #3 off Bayberry Point) and a staff displaying an orange flag aboard the RC Boat. All yachts must start between the committee boat and the orange buoy leaving the RC to starboard. Please be aware that the committee boat's position may vary do to conditions.

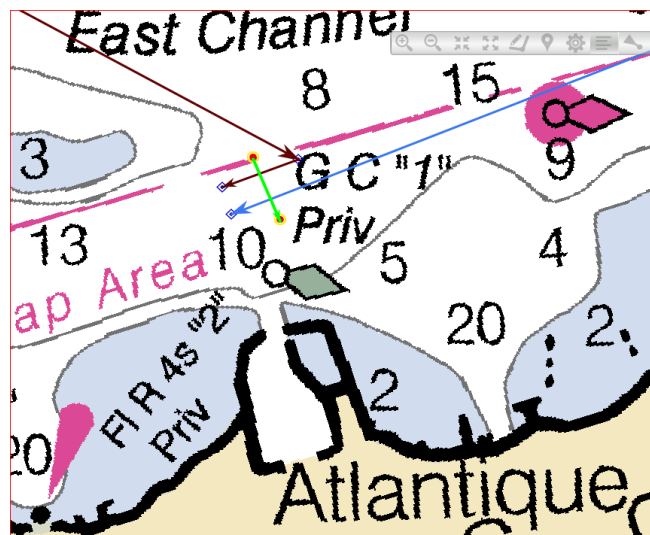
6.2 This is a *Pursuit style race* meaning each yacht's handicap is pre-calculated into that yacht's start time. The finishing position is determined by the exact order the yachts cross the finish line.

6.3 The intention is to start the race at exactly on the hour gps time; however, in the event of any delays it may not work out that conveniently. Please be sure to keep track of the start sequence with your own timing device and particularly note the 'Start' signal time and calculate your yacht's start time from there.

6.4 Each yacht has an individual start time calculated for that yacht's assigned PHRF handicap rating (hcap). To determine your start time, lookup up your yacht's rating in the 'Start time offset table' (last page) and add the 'Start after' minutes and seconds to the precise time of the 'Start' BLUE flag is lowered.

Signal	Flag	Sound	Visual	Time to Start (minutes)
Attention		4 very short		~6
Warning	BLUE (raised)	1 short		5
Preparatory	BLUE w/ WHITE (raised)	1 short		4
One-minute	BLUE w/ WHITE (lowered)	1 long		1
Start	BLUE (lowered)	1 short		0

7. THE FINISH: The finish shall be between the committee boat and the 'X' mark to her north just off the north eastern most corner of the Atlantique dock. ALL boats must take the 'X' mark to STARBOARD.



8. PROTESTS AND REQUESTS FOR REDRESS:

All hearings for redress and protests will be held immediately following the race.

9. SCORING:

Scoring will be done by the **pursuit method based on Time-on-Distance**. A boat's time allowance will be taken at her start so that boats' finishing position will be their actual finish place.

10. SAFETY REGULATIONS:

A boat electing to withdraw shall notify the Race Committee by VHF 72 or telephone the Race Committee at 516 901-5994 as soon as possible. Failure to do so may impact future participation.

11. RADIO COMMUNICATIONS:

The Race Committee will monitor VHF Channel 72. It is recommended that all racing yachts do so.

12. PRIZES:

The winners will be announced during the rendezvous and a trophy will be awarded to 1st, 2nd, and 3rd place boats.

13. DISCLAIMER OF LIABILITY:

13.1 Competitors participate entirely at their own risk. See RRS Rule 4: Decision to Race.

13.2 South Bay Cruising Club, their respective officers, employees, agents, and committees, members of the Board of Governors, committee chairpersons, and members will not accept any liability for material damages or personal injury, or death sustained in conjunction with, or prior to, or during or after the race.

14. CONTACT INFORMATION:

Race Committee: Marty O'Connell: (516) 901-5994 marty1227@kb5gang.com

SBCC Handicap Chairperson: Jim Reichel (516) 473-3095 sailorchce@aol.com

Atlantique Dockmaster: (631) 583-8610

Fire Island Ferries: (631) 665-3600

Start time offset table: (6.3nm)

hcap	Start after	hcap	Start after	hcap	Start after	hcap	Start after	hcap	Start after
300	0:00:00	250	0:05:15	200	0:10:30	150	0:15:45	100	0:21:00
299	0:00:06	249	0:05:21	199	0:10:36	149	0:15:51	99	0:21:06
298	0:00:13	248	0:05:28	198	0:10:43	148	0:15:58	98	0:21:13
297	0:00:19	247	0:05:34	197	0:10:49	147	0:16:04	97	0:21:19
296	0:00:25	246	0:05:40	196	0:10:55	146	0:16:10	96	0:21:25
295	0:00:32	245	0:05:47	195	0:11:02	145	0:16:17	95	0:21:32
294	0:00:38	244	0:05:53	194	0:11:08	144	0:16:23	94	0:21:38
293	0:00:44	243	0:05:59	193	0:11:14	143	0:16:29	93	0:21:44
292	0:00:50	242	0:06:05	192	0:11:20	142	0:16:35	92	0:21:50
291	0:00:57	241	0:06:12	191	0:11:27	141	0:16:42	91	0:21:57
290	0:01:03	240	0:06:18	190	0:11:33	140	0:16:48	90	0:22:03
289	0:01:09	239	0:06:24	189	0:11:39	139	0:16:54	89	0:22:09
288	0:01:16	238	0:06:31	188	0:11:46	138	0:17:01	88	0:22:16
287	0:01:22	237	0:06:37	187	0:11:52	137	0:17:07	87	0:22:22
286	0:01:28	236	0:06:43	186	0:11:58	136	0:17:13	86	0:22:28
285	0:01:35	235	0:06:50	185	0:12:05	135	0:17:20	85	0:22:35
284	0:01:41	234	0:06:56	184	0:12:11	134	0:17:26	84	0:22:41
283	0:01:47	233	0:07:02	183	0:12:17	133	0:17:32	83	0:22:47
282	0:01:53	232	0:07:08	182	0:12:23	132	0:17:38	82	0:22:53
281	0:02:00	231	0:07:15	181	0:12:30	131	0:17:45	81	0:23:00
280	0:02:06	230	0:07:21	180	0:12:36	130	0:17:51	80	0:23:06
279	0:02:12	229	0:07:27	179	0:12:42	129	0:17:57	79	0:23:12
278	0:02:19	228	0:07:34	178	0:12:49	128	0:18:04	78	0:23:19
277	0:02:25	227	0:07:40	177	0:12:55	127	0:18:10	77	0:23:25
276	0:02:31	226	0:07:46	176	0:13:01	126	0:18:16	76	0:23:31
275	0:02:38	225	0:07:53	175	0:13:08	125	0:18:23	75	0:23:38
274	0:02:44	224	0:07:59	174	0:13:14	124	0:18:29		
273	0:02:50	223	0:08:05	173	0:13:20	123	0:18:35		
272	0:02:56	222	0:08:11	172	0:13:26	122	0:18:41		
271	0:03:03	221	0:08:18	171	0:13:33	121	0:18:48		
270	0:03:09	220	0:08:24	170	0:13:39	120	0:18:54		
269	0:03:15	219	0:08:30	169	0:13:45	119	0:19:00		
268	0:03:22	218	0:08:37	168	0:13:52	118	0:19:07		
267	0:03:28	217	0:08:43	167	0:13:58	117	0:19:13		
266	0:03:34	216	0:08:49	166	0:14:04	116	0:19:19		
265	0:03:41	215	0:08:56	165	0:14:11	115	0:19:26		
264	0:03:47	214	0:09:02	164	0:14:17	114	0:19:32		
263	0:03:53	213	0:09:08	163	0:14:23	113	0:19:38		
262	0:03:59	212	0:09:14	162	0:14:29	112	0:19:44		
261	0:04:06	211	0:09:21	161	0:14:36	111	0:19:51		
260	0:04:12	210	0:09:27	160	0:14:42	110	0:19:57		
259	0:04:18	209	0:09:33	159	0:14:48	109	0:20:03		
258	0:04:25	208	0:09:40	158	0:14:55	108	0:20:10		
257	0:04:31	207	0:09:46	157	0:15:01	107	0:20:16		
256	0:04:37	206	0:09:52	156	0:15:07	106	0:20:22		
255	0:04:44	205	0:09:59	155	0:15:14	105	0:20:29		
254	0:04:50	204	0:10:05	154	0:15:20	104	0:20:35		
253	0:04:56	203	0:10:11	153	0:15:26	103	0:20:41		
252	0:05:02	202	0:10:17	152	0:15:32	102	0:20:47		
251	0:05:09	201	0:10:24	151	0:15:39	101	0:20:54		