



SOUTH BAY CRUISING CLUB

YEARBOOK 2011

South Bay Cruising Club 2011



60th Anniversary Issue

Table of Contents
South Bay Cruising Club
2011 Yearbook

Commodore's Message.....	3
Fleet Captain's Message.....	4
Regatta Captain's Message.....	5
Officers, Governors and Committees.....	6
2011 Social, Cruising and Race Schedule.....	8
Notes to the Race Schedule.....	15
Our New Members.....	16
Honorary Life Members and Past Commodores.....	18
Cruising and Rendezvous Program.....	25
Club Races and Awards.....	26
SBCC Notice of Race and Sailing Instructions.....	29
SBCC Notice of Race - Race Courses.....	38
2010 Newport Bermuda Race.....	44
2010 Greenport Ocean Race.....	45
SBCC 60th Anniversary Retrospective.....	46
Two Week Cruise - To New Jersey.....	56
One Week Cruise - Around The Bay.....	60
2010 Cruising Awards.....	70
2010 Rendezvous Awards.....	72
2010 Major Awards.....	74
2010 Racing Awards.....	75
SBCC Awards History.....	80
2010 Holiday Party.....	86
Member Listings.....	88
Associates.....	102
SBCC Fleet - Sailing Auxiliaries.....	103
SBCC Fleet - Power Vessels.....	106
SBCC Yachts by Name.....	107
In Memoriam.....	110
Dedication.....	111
SBCC Ships Store.....	112

SBCC Historian's Message.....	Inside Front Cover
International Code Flags & Pennants.....	Inside Rear Cover



Commodore's Message

This year marks our 60th Anniversary. Once again we give great thanks to our yearbook chairs and committee for bringing us a spectacular, better than first class "clubhouse." As usual, our volunteer committees have a full schedule of rendezvous, racing, hospitality and program events, cruising, and other activities for us all to enjoy.



In this issue we have a beautiful spread of historical SBCC photos and memorabilia, but that is just a tease for an expanded retrospective to be presented in the Fall.

Flipping through the pages it is easy to embrace the nostalgia, and think of what now seems to be a simpler time. One thing for sure is that the simple joy of sailing that motivated our founders to create this wonderful organization, eschewing "bricks and mortar" in favor of a looser social network—long before the world wide web (and even before color TVs)—remains in full for us today. Each time we take to the sea, the bay or even just the canal, we not only create new "classic" memories for us and future generations to reflect upon and enjoy, we also in our own ways embrace the spirit of adventure surely known by our immediate forebears and countless sailors in the past.

Fortunately, these days most of us sail for recreational adventure rather than out of practical necessity, though judging by the fantastic member participation in all things SBCC there may be something more compelling at work. For me, there is hardly a place on earth where I feel more at peace, more in tune with our Creator and the magnificent universe we inhabit, than I do on the boat. I suspect that might be true for all sailors. Remember that it is a special gift that we have been given, one that we must hold on to, nurture, and I suggest that we must share generously.

For the present, let's get out and indulge our passion, but not only for ourselves. For the future of our Club I encourage you to take and teach a friend, invite a stranger, and pique a child's interest and imagination. For the past, we owe all that came before us our strongest effort to make the memory factory overflow, and to make this 61st year one for the books too. And, may God Bless us in all we do, but especially with good sailing weather.

Matthew J DeMarco

Fleet Captain's Message

As you read this in the SBCC Yearbook, the SBCC will be celebrating its 60th Anniversary. But while some things change over time, other things remain the same. We're still a group of folks who are enthusiastic about sailing and being on the water. We still have members who take their boats down to warmer waters in the "off" season, and we still have members who take their boats in season to nearby destinations.



In the 2010 season we had 28 Rendezvous that were almost evenly split by the Robert Moses Causeway, with about half east of the bridge and half to the west of the bridge. The two official Cruises of 2010 were evenly split by the Fire Island Inlet, with the one-week Cruise in the Bay staying inside the Inlet and the two-week Cruise to the Jersey Shore which went outside the Inlet.

Thanks to our Captains of the 2010 one-week Cruise in the Bay we got a whopping 41 boats to spend at least one night on that Cruise. Thanks to our Captain of the 2010 two-week Cruise to the Jersey Shore, I now have two new favorite nearby destinations in Seaside Park and Beach Haven, NJ. Even my former favorite sailing destinations of Greenport, Sag Harbor, Block Island, Sheepshead Bay and Northport have slipped down the list of favorites to make way for those two Jersey shore destinations – which will probably stay at the top of the list for a long time to come.

Thanks to the Rendezvous Captains of 2010. We've had fun together on the water.

So there it is: This Club continues to thrive, even 60 years later, because there are people who are willing to share their time and share their sailing experiences with others. Many thanks to all of you whose energy and efforts continue to make this a great Club!

Looking forward to seeing you on the water,

Rich Troy

Regatta Captain's Message

The 2010 season has come to an end...and what fun it was! Together, we ran 51 successful events, along with 6 other organizations. I think that is a feat in itself. This could not have been accomplished without the help of all the volunteers. I want to personally thank each and every one of you! Now please join me in ringing the new 2011 sailing year in. We have many exciting things slated for the upcoming season.



I also want to thank everyone who comes out week in and week out, bad weather or good, flat water or gales. It is the sailors of this great organization who make the SBCC the best organization on the Bay. I never get tired of learning something new and interesting from each and every one of you.

The Regatta Committee has been hard at work preparing for 2011. As in all the years past, we can only make each year more successful than the last with your help. We need your suggestions, ideas and input! We have had many great successes in 2010. There was a fantastic turnout for the West Island and Mayor's Cup (LIYC). Please contact me via email to share whatever it is that's on your mind. I am never too busy to hear what a fellow member has to say.

One of the initiatives I am still working on is trying to get more boats out on the race course. We have the boats. We have the ability. Please come on out. There will be another racing seminar in early 2011. Please get involved.

Thank you all for an incredible 2010. It has been an honor and a pleasure to serve as your Regatta Chairman. I know I am looking forward to 2011!

Regards,

Andrew Hemingway

2011 Social, Cruising, and Race Schedule
See www.sbccsail.org & the Masthead for schedule changes

SBCC EVENTS APRIL 2011		
Date		
9	Sat	SBCC Spring Party
23	Sat	Rendezvous 'Early Bird Special' at Davis Park
24	Sun	Host <i>Habanero Montana/Bennett</i>
30		Rendezvous 'Spring Break' at Tailsman
1		Host <i>Anjolie Egolf</i>

SBCC EVENTS MAY 2011		
Date		
5	Thurs 1900	Skippers Meeting West Islip Library Hemingway
7	Sat	Rendezvous at Unqua Heading
8	Sun	
10	Tues 1930	Bay Shore Twilight Spring 1 RC Regan No Spin Notes 2,11 Crs 1-02
12	Thur 1930	Babylon Twilight Spring 1 RC Fifield Reg Start Notes 2,11 Crs 1-9
14	Sat	Rendezvous 'Come as You Are' at Great River
15	Sun	Host <i>Vixen Peter</i>
17	Tues 1930	Bay Shore Twilight Spring 2 RC Eppig No Spin Notes 2,11 Crs 1-02
19	Thur 1930	Babylon Twilight Spring 2 RC Dalsley Reg Start Notes 2,11 Crs 1-9
21	Sat	Rendezvous at Watch Hill
22	Sun	Host <i>Mareva Schlossberg</i>
24	Tues 1930	Bay Shore Twilight Spring 3 RC Glinski No Spin Notes 2,11 Crs 1-02
26	Thur 1930	Babylon Twilight Spring 3 RC O'Connell Reg Start Notes 2,11 Crs 1-9
28	Sat	Rendezvous at Great River
29	Sun	Host <i>Silent P Pshodesky</i>
29	Sun	Rendezvous on Willets Creek
30	Mon	Host <i>Dream Voyager Biesel</i>
30	Mon 1100	Creepstakes Babylon RC Eppig Creepstakes Start Note 1,5,10 Crs 1-9
30	Mon	SBCC Commissioning Day Babylon Yacht Club
31	Tues 1930	Bay Shore Twilight Spring 4 RC LaTorre No Spin Notes 2,11 Crs 1-02



2011 Social, Cruising, and Race Schedule
See www.sbccsail.org & the Masthead for schedule changes

SBCC EVENTS JUNE 2011		
Date		
2	Thur 1930	Babylon Twilight Spring 4 RC LaTorre Reg Start Notes 2,11 Crs 1-9
4	Sat	'Spring Family Weekend' at Watch Hill
5	Sun	Host <i>Maggie Lee Christiansen</i>
7	Tues 1930	Bay Shore Twilight Summer 1 RC Davis No Spin Notes 2,11 Crs 1-02
9	Thur 1930	Babylon Twilight Summer 1 RC O'Connell Reg Start Notes 2,11 Crs 1-9
11	Sat	Rendezvous at Great River
12	Sun	Host <i>Tanzanite Greco</i>
12	Sun 1000	GSBYRA Mens/Womens Championship Babylon Yacht Club
14	Tues 1930	Bay Shore Twilight Summer 2 RC Regan No Spin Notes 2,11 Crs 1-02
16	Thur 1930	Babylon Twilight Summer 2 RC Capitain Reg Start Notes 2,11 Crs 1-9
17	Fri 1900 2130	Babylon Cup Invitational RC Penny Non Spin Notes 1, 7, 9, 11 Crs 1-9 After Party BYC Hemingway
18	Sat	Rendezvous at Atlantique
19	Sun	Host <i>Flying Wasp Hemingway</i>
21	Tues 1930	Bay Shore Twilight Summer 3 RC Rendich No Spin Notes 2,11 Crs 1-02
23	Thur 1930	Babylon Twilight Summer 3 RC McLoughlin Reg Start Notes 2,11 Crs 1-9
25	Sat	Start Two Week Cruise
25	Sat	Rendezvous 'Sing or Swim' at Hemlock Cove
26	Sun	Host <i>Grace DeMarco</i>
26	1200	Commodores Cup Invitational Bay Shore RC Davis Reg Start Notes 7,9,12 Crs 1-02
28	Tues 1930	Bay Shore Twilight Summer 4 RC Padden No Spin Notes 2,11 Crs 1-02
30	Thur 1930	Babylon Twilight Summer 4 RC Duffy Reg Start Notes 2,11 Crs 1-9



2011 Social, Cruising, and Race Schedule
See www.sbccsail.org & the Masthead for schedule changes

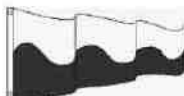
SBCC EVENTS JULY 2011			
Date			
2	TBA Sat	Babylon Yacht Club Invitational Reg Start	Notes 1,3,6 Crs TBA
2 3	Sat Sun	Rendezvous at Oak Island Lead	
5	Tues 1930	Bay Shore Twilight Mid Summer 1 RC Manko Non Spin	Notes 2,11 Crs 1-02
7	Thur 1930	Babylon Twilight Mid Summer 1 RC Milligi Reg Start	Notes 2,11 Crs 1-9
9 10	Sat Sun	Rendezvous at Zach's Bay Host Shoot n' The Breeze Czach	
12	Tues 1930	Bay Shore Twilight Mid Summer 2 RC Davies Non Spin	Notes 2,11 Crs 1-02
14	Thur 1930	Babylon Twilight Mid Summer 2 RC Milligi Reg Start	Notes 2,11 Crs 1-9
16	Sat 1200 1500	UCYC & SBCC West Cup Babylon RC Reichel Reg Start After Party UCYC Hemingway/Reichel	Notes 1,7,11 Crs 1-9
16 17	Sat Sun	Rendezvous 'Sing... Sing... Sing' at Hemlock Cove Host Blue Horizon Daisley	

2011 Social, Cruising, and Race Schedule
See www.sbccsail.org & the Masthead for schedule changes

SBCC EVENTS JULY 2011			
Date			
19	Tues 1930	Bay Shore Twilight Mid Summer 3 RC McMillan Reg Start	Notes 2,11 Crs 1-02
21	Thur 1930	Babylon Twilight Mid Summer 3 RC McMillan Reg Start	Notes 2,11 Crs 1-9
23 Sat	Sat 1200 1500	Broadsides Womens Invitational RC Hemingway Non Spin After Party	Notes 2,11 Crs 1-02
23 24	Sat Sun	Rendezvous 'Heave Ho' at Coast Guard Cove Host Miss Liberty II Sherman	
26	Tues 1930	Bay Shore Twilight Mid Summer 4 RC Padden Non Spin	Notes 2,11 Crs 1-02
28	Thur 1930	Babylon Twilight Mid Summer 4 RC Goodman Reg Start	Notes 2,11 Crs 1-9
30 31	Sat Sun	GSBYRA Race Week BSYC	Notes 1,3,6
30 31	Sat Sun	Rendezvous at Great River Host Arcadia Sheppard	
31	Sun	SBCC Champagne Breakfast at Great River Host Fun Sway Troy	



SBCC EVENTS AUGUST 2011			
Date			
2	Tues 1930	Bay Shore Twilight Late Summer 1 RC Drossos Non Spin	Notes 2,11 Crs 1-02
4	Thur 1930	Babylon Twilight Late Summer 1 RC Sullivan Reg Start	Notes 2,11 Crs 1-9
6	Sat Sun	Rendezvous at Hemlock Cove Host <i>della.calm</i> Bucher	
6	1200 Sat	West Island Invitational Race Bay Shore RC Romaine Reg Start	Notes 1,23, 7,9,12 Crs West Is.
9	Tues 1930	Bay Shore Twilight Late Summer 2 RC Crocker Non Spin	Notes 2,11 Crs 1-02
11	Thur 1930	Babylon Twilight Late Summer 2 RC Marinaccio Reg Start	Notes 2,11 Crs 1-9
13	Sat 1530	SBCC Blast Vanderbilt's Wharf Oakdale	
13	Sat	Leukemia Cup SYC	
14	Sun	Start One Week Cruise	
16	Tues 1930	Bay Shore Twilight Late Summer 3 RC Schneller Non Spin	Notes 2,11 Crs 1-02
18	Thur 1930	Babylon Twilight Late Summer 3 RC Marinaccio Reg Start	Notes 2,11 Crs 1-9
20	Sat	Rendezvous at Coast Guard Cove Host <i>Jayne Heir</i> Tinelli	
21	Sun		
23	Tues 1900	Bay Shore Twilight Late Summer 4 RC Schneller Non Spin	Notes 2,11 Crs 1-02
25	Thur 1900	Babylon Twilight Late Summer 4 RC Bartow Reg Start	Notes 2,11 Crs 1-9
27	1600	Foulke Trophy Race Bay Shore RC Holst Stag Start	Notes 1,7,9,13 Crs Foulke
27	Sat	Rendezvous at Great River Host <i>Fox</i> Piazza	
28	Sun		
30	Tues 1900	Bay Shore Twilight Wrap Up 1 RC Glinski Non Spin	Notes 2,11 Crs 1-02



SBCC EVENTS SEPTEMBER 2011			
Date			
1	Thur 1900	Babylon Twilight Wrap Up 1 RC Bieselin Reg Start	Notes 2,11 Crs 1-9
3	Sat	Rendezvous at Great River Host <i>Free Spirit</i> DeSimone	
4	Sun		
6	Tues 1900	Bay Shore Twilight Wrap Up 2 RC Davies No Spin	Notes 2,11 Crs 1-02
8	Thur 1900	Babylon Twilight Wrap Up 2 RC Forman Reg Start	Notes 2,11 Crs 1-9
10	Sat	Rendezvous at Oak Island Lead Host <i>Phoebe Rose</i> Tedesco	
11	Sun 1200	Smith Trophy Invitational Distance Race Bay Shore RC Forman Reg Start	Notes 1,7,9,12 Crs D1 D2
13	Tues 1830	Bay Shore Twilight Wrap Up 3 RC Drossos No Spin	Notes 2,11 Crs 1-02
15	Thur 1830	Babylon Twilight Wrap Up 3 RC Bartow Reg Start	Notes 2,11 Crs 1-9
17	Sat 1200 1500	LIYC Mayors Cup RC Hemingway After Party	Note 3
17	Sat	Rendezvous 'Off to the Dinghy Races' at Hemlock Host <i>Belle Free</i> Baxter	
18	Sun		
20	Tues 1830	Bay Shore Twilight Wrap Up 4 RC Crocker No Spin	Notes 2,11 Crs 1-02
22	Thur 1830	Babylon Twilight Wrap Up 4 RC Romaine Reg Start	Notes 2,11 Crs 1-9
24	Sat	Fall Family Weekend at Atlantique Host <i>Jacqueline V</i> Forman	
25	Sun		



2011 Social, Cruising, and Race Schedule
See www.sbccsail.org & the Masthead for schedule changes

Date SBCC EVENTS OCTOBER 2011

1	Sat	Rendezvous at Great River	
2	Sun	Host <i>Eagles Wings</i> Mattera	
1	Sat	C&C 25 Regatta	
1200		Non Spin	
2	Sun	Babylon Yacht Club	Note 3
1200		Louis Orr Jr. Invitational	Crs TBA
8	Sat	Whitebread Cutchoque Bay	
TBA		PBSA	
8	Sat	Rendezvous at Atlantique	
9	Sun	Host <i>Njord</i> Eilbeck	
9	Sun	Discoverer's Invitational Race Bay Shore	Notes ,9,12
		RC C Drossos Reg Start	Crs 1-02
15	Sat	Rendezvous 'Last Call' at Coast Guard Cove	
16	Sun	Host <i>Loon</i> Duffy	
22	Sat	SBCC Boatyard Party	
1300			
29	1200	Last Chance Halloween Invitational	Notes
		Babylon	7,9,12
		RC Manko Reg Start	Crs 1-9

2011 Social, Cruising, and Race Schedule
See www.sbccsail.org & the Masthead for schedule changes

Date SBCC EVENTS NOVEMBER 2011

5	Sat	Fall Series One Babylon	Notes 2,12
1200		RC Hartnett Reg Start	Crs 1-9
12	Sat	Fall Series Two Babylon	Notes 2,12
1200		RC Hartnett Reg Start	Crs 1-9
26	Sat	Turkey Race Babylon	Notes 1,12
1200		RC Morgan Reg Start	Crs 1-9
1400		After Party Hemingway	

SBCC EVENTS DECEMBER 2011

3	Sat	South Bay Cruising Club
1800		Holiday Party

SBCC EVENTS 2012

JAN	Sun	2012 Brooks Race
1	1200	Babylon Village Main Dock RC Holst
	1400	After Party Pier 44
Feb	Tues	Race Awards
7	1900	Hemingway Farrell's



Notes to the Race Schedule

- TBA To be announced.
- See instructions III. D. – SPECIAL RACES.
 - See instructions III. C. – SERIES RACES.
 - Invitational Race-Obtain information from sponsoring club.
 - NOT USED**
 - Finish at Babylon Yacht Club.
 - Requires registration fee.
 - SBCC Invitational open to members of GSBYRA* affiliated clubs.
*Monohull boats only.
 - NOT USED**
 - Same course for spin and non-spin classes.
 - Personal Flotation Devices must be worn by entire crew.

TIME LIMITS

- 2230 for Twilights.
- 1800.
- No time limit.

Our New Members

Lawrence Becker lives in Bay Shore and sails *Gorilla Dust*, a Holder 20. He enjoys racing with the SBCC. He participated in several races this year and was sponsored by Aileen Eppig and Harry Manko.

Kevin and Kristine Duscuenchuk sail *Island Breeze* a Beneteau 331. They live in Sayville and participated in several rendezvous, as well as the one week Cruise in 2010. They were sponsored by Kevin Regan and Andrew Hemingway.

Jurgen Fenske and Michele Jaeger are from Blue Point. They sail *Class Sea M*, a Catalina 36. They enjoyed cruising and attending rendezvous with SBCC members during 2010.

Roger and Daisey Holzmacher are from Babylon and sail both *Wanderlust*, a Phil Bolger Yawl, and the recently acquired *Canada Goose*, a Morgan 30. Roger grew up in the SBCC and has great memories of the early years of our Club. They have two children, Ian and Grace, who love to sail. The Holzmachers were sponsored by Jim Glynn and Paul Rendich.

Stephen McGlone lives in West Sayville and sails a 30ft Pearson Wanderer named *Canoepatch*. Stephen is both restoring and racing his sailboat. He grew up in East Islip, loves the Great South Bay, and has plied the waters from the New England coast to the Caribbean where his ocean operator's license proved an asset. He is enjoying the camaraderie of the club. He was sponsored by Frank Peter and Dick Graham.

Gary Sebounhian purchased *Pandemonium* a C&C 29 from Chris Beach. He lives in East Rockaway and successfully raced *Pandemonium* in 2010.

Patrick and Karissa Sullivan live in West Islip and sail *Rum-Line*, a 25ft C&C sloop, which they berth in their home town. Patrick has been racing since he was 6 years old. He is a member of Babylon Yacht Club and is glad he joined the SBCC. He looks forward to participating in rendezvous with Karissa. They race *Rum-Line*, their third sailboat, and love the challenge and fun of boating.

Thomas and Susan Davison live in Sayville and sail *Peregrine*, a 28ft Sabre MKII sloop, which they berth in their home town. They have three children, Lyle, Drake, and Rowan. They were sponsored by Sue Montana, Bob Bennett, and Andrew Hemingway.



Our New Members



Many thanks to our photographers, who submitted such wonderful pictures to remind us of so many good times last year. Here's the listing of people who submitted pictures to this SBCC Yearbook:

Dorothy Becker	Chase Drossos	Richard LaBella	Vince Piazza
Bob Bennett	Ted Drossos	Bill Ludlum	Ed Pshedsky
Della Bucher	Mike Duffy	Harry Manko	Russ Roberts
Sandy Cariberg	Tara Fierenze	Dotty Max	Barry Schlossberg
Corrine Conger	Jarett Fifield	Richard Mourino	Bob Sheppard
Dennis Connor	Eric Forsyth	Marty O'Connell	Arlene Swenson
Peg Daisley	Joe & DJ Greco	Dave O'Donnell	Rich Tesoro
Bob DeSimone	Jim & Debbie Harris	Dick Parker	Joe Waits

Honorary Life Members and Past Commodores

The SBCC grants honorary life membership to all Past Commodores, in recognition of their devotion and duty to the Club. Each of them has contributed time, talent, and friendship to help make the South Bay Cruising Club the success it is today.



Dr. Marston L. Hamlin*



Hervey G. Smith*



Frederick F. Zimmerman*



William P. Carl, Jr.*
1951



James A. Swan, Jr.*
1952-1953



John F. Young
1954-1955



Henry A. V. Post*
1956-1957



Merritt L. Smith*
1958-1959



Robert L. Paterson*
1960-1961



John D. Beinert*
1962-1963



Everett F. Seidenberg
1964-1965



Roger G. Ramsdell, Jr.*
1966-1967

Past Commodores



Alex Pearson
1968-1969



Fred C. Eggerstedt, Jr.*
1970-1971



William F. Bradt*
1972-1973



M. Whiting Thayer
1974-1975



Bud Rosenberg
1976-1977



Richard C. Nehring*
1978-1979



William J. Dwyer*
1980-1981



Kenneth A. Kondor*
1982-1983



Earl W. Murray, Jr.
1984-1985



Anton F. Davies
1986-1987



Donald J. Zimmer
1988-1989



Robert J. Sheppard
1990-1991



Michael G. Smith
1992-1993



Edward L. Petroske*
1994-1995



Barry V. Pittman
1996-1997

*Deceased

*Deceased

Past Commodores



Dick La Bella
1998-1999



Rich LaTorre
2000-2001



Sally Eilbeck
2002-2003



John Davis
2004 - 2005



Bob Van Tassel
2006 - 2007



Bill Grauer
2008 - 2009

Members in the SBCC 50 or more Years

Year Joined	Member
1951	Nancy Swan John Young, Past Commodore
1953	Dorothy Max Lucy Eggerstedt
1955	Everett Seidenberg, Past Commodore William Thomas
1956	Alfred Heckel Whiting Thayer, Past Commodore
1957	Isabelle Ramsdell Bud Rosenberg, Past Commodore
1958	James Grover
1959	Alex Pearson, Past Commodore
1960	Alec Yaxis
1961	Dever and Andrea Larmor



Commissioning Day



Commissioning Day

Creepstakes Race





Cruising and Rendezvous Program

CRUISES

Early in the year, the Fleet Captain and the Cruise Committee put out an inquiry to the membership for opinions to work out tentative cruise itineraries. Plans for an extended two week and three week cruise off the bay are asked to be submitted to be put forth to the membership. A One Week Cruise Around the Bay has traditionally been held the week after the annual blast.

When a member(s) submits a plan for a cruise, that person(s) will act as Cruise Captain. The Cruise Captain will submit a draft itinerary of dates, ports of call, and activities to be published in the Masthead. A meeting date will be announced to present the cruise itinerary to the membership, usually in March. A final itinerary with dates, times, tides and activities will be given out to members who plan to sail on a cruise of their choice.

During a cruise, the itinerary may have to be adjusted due to weather. The Cruise Captain's responsibility is to keep the fleet informed of daily plans and/or changes that may occur. It is also the responsibility of the captains participating on a cruise to advise the Cruise Captain if they plan to leave the cruise and go their own way.

THE SBCC RENDEZVOUS

The designated HOST boat should hoist the large burgee supplied by the Fleet Captain. All hands are invited to attend. Rendezvous usually begin around 1630 hrs. and last for about 2 hours. It is customary in the SBCC to bring your own drinks and to contribute to the snacks. Boat names should be on your bowls or platters and taken back to your boat. Pets should be left on their owner's boat. It is the duty of the HOST boat's captain to take a list of the boats that attend the rendezvous and stay the night until 6 am the next morning. That list should be given to the Fleet Captain as soon as possible by email.

Rendezvous are not normally cancelled due to inclement weather, but will be cancelled in the event that severe weather is forecast.

In the event the HOST captain is unable to attend their scheduled Rendezvous, it is expected that the HOST captain will obtain a substitute HOST boat and captain for the event, and then notify the Fleet Captain by telephone.

RAFT-UP PROCEDURE

It has been tradition that no invitation is necessary to join a raft-up at a SBCC rendezvous, **weather permitting**, but please ask the HOST boat for permission to raft-up for the duration of the rendezvous. After the rendezvous, you should leave the raft and anchor nearby. While attending the rendezvous, please treat other boats as you would your own.

Club Races and Awards

Over the course of our Club history, many special races, trophies and awards have been developed to meet the needs and interests of SBCC members. The late Gene Reardon, our past historian, compiled a brief description of some of these.

Perseverance Trophy – Donated by Fred Schnur in 1951. A consolation prize for the last boat to finish in the West Island Race. It was discontinued in 1994.

West Island Race – A race, established in 1951, in which a boat could sail the published course in either direction. This tested the skippers not only in the normal racing skills, but also in the added factors of predicting the winds, waves, tides and currents in the selection of which way to go around West Island. This race was the brain child of Hervey Smith and was originally called "The Annual Race". This is normally the best attended race of the season.

Annual Cruise Award – This was designed to reward the best planned and executed cruise. Established in 1952, it originally required the submittal of an itinerary in advance. This award transformed itself into the Blue Water award in 1964. In 1967 the Green Water Award was added.

Ocean Race – First sailed in 1953, it was sailed from just outside of Fire Island Inlet to either Jones Inlet or to an offshore buoy. Typically, it was about a 25 nm race. It was originally called the Lightship Race and, for a period between 1954 and 1961, it was replaced by the Night Race.

Foulke Trophy Race – Established in 1954 in honor of J. Brion Foulke Jr., for the best corrected time in a race from Babylon to Bellport and return, finishing after dark. Beginning in 1959 it was required to keep south of West Island on the eastbound leg. This requirement was dropped in 1961.

Smith Trophy Race – This trophy was donated in 1954 by Hervey Smith in memory of his father. It was for a day race sailed in Patchogue Bay that was conducted by the Wet Pants Sailing Association as an invitational. In 1972 the race was moved to start in Bay Shore and run by the SBCC.

Ladies' Race – From its inception in 1955, the helmsman was required to be female. Beginning in 1966, a special award was given to the boat with not only a female skipper, but also an all female crew.

Commodore's Cup – Established in 1956 by Commodore Henry Post. Bestowed upon the boat with the best combined times in the Labor Day Weekend races, Babylon to Bellport, and Smith Trophy at Sayville. A special effort was made to encourage the entire family to be involved. In 1957 it became a single race from Timber Point to Bellport, and in 1973 it became a closed course race, sailed in Nicoll Bay.

Windjammer Trophy – Given to the boat that sailed the greatest distance on a Club cruise. The skippers computed the distances from their logs and submitted a report to the Cruise Committee. This award had a short life from 1957 to 1959.

Single-handed Creepstakes – Started in 1960 for a race in which only the skipper was on board. Beginning around 1980, spinnakers were also permitted. The spinnaker experiment was terminated around 1989 after several close encounters.

Deale Trophy – Created in 1963, in memory of William H. Deale, for the best corrected time in the West Island Race.

Club Races and Awards

Sympatico Cup – This trophy was donated by Merritt Smith in 1963. It was originally called the Regatta Committee Trophy and is bestowed upon the last boat to finish in the Foulke trophy race. It was discontinued in 1984.

Character Cup – Donated by Ev Seidenberg in 1965, for the individuals contributing to "the legend and lore of the Great South Bay". Last awarded in 1968.

Broadside Trophy – Established in 1966 by Boyd Max, to be awarded to the first boat to cross the finish line in the Ladies Day Race with an all female crew - thus the Broadside cannon salute to the skipper. This trophy was retired in 1982.

Governor's Cup – Created in 1966 by the SBCC Board of Governors for the best total score in the West Island, Foulke and Commodore's Cup races.

Patricia A. Kelly Trophy – Created in 1982 by the SBCC for the best corrected time in the Ladies Race with an all-female crew.

Cary Pearsall Trophy – For the best corrected time in the Cary Pearsall Race. First awarded in 1993.

Cruising Awards

Cruising Awards are given for participation in any of the Club's organized cruises. To qualify, a yacht must anchor or tie-up with the fleet for at least 50% of the time designated for a cruise by the Fleet Captain. The Fleet Captain will submit a list of yachts eligible, based on cruise attendance records.

Rendezvous Awards are given, at the Fleet Captain's discretion, to boats that attend a minimum number of rendezvous.

Blue Water Award – To recognize a well-planned and well-executed extended offshore cruise. Begun in 1964 and awarded occasionally, as deemed appropriate by the Awards Committee. It was the outgrowth of the Annual Cruising Award.

Green Water Award – Begun in 1967 to recognize a cruise of significantly greater distance and duration than the regular Club cruises. It was also an outgrowth of the Annual Cruising Award.

Cruising Club Crock – Begun in 1969 and given anonymously. It was for first place in the Character Boat Beauty Contest and Race and was originally called the Character Boat Perpetual Trophy. Competition was by invitation from the Selection Committee. In 1979 this trophy was changed to the best corrected time by a Club boat in the Around Long Island Race.

Sheila Daytz Trophy – Begun in 1993 and given to the boat attending the greatest number of Club Rendezvous in a season.

The Ken Kondor Trophy was created in 1995 and is awarded to the boat that does the most combined cruising and racing. To qualify, a boat must complete at least four races and get credit for four rendezvous. A boat gets one point for completing each race, an additional point for placing in a race, two points for attending a rendezvous and one point for hosting a rendezvous. The trophy is awarded annually at Commissioning Day.



SBCC Notice of Race and Sailing Instructions

I. QUALIFYING TO RACE

Sailboats eligible to race in accordance with the South Bay Cruising Club (SBCC) bylaws owned or chartered by SBCC members in good standing are encouraged to participate in club races.

A. INTENT OF PROGRAM

All sailboats are assumed to comply with the manufacturers' standard hull and accommodation plans. It is the responsibility of the owner of any vessel that has been materially modified or is of a unique design to inform the Handicap Committee of the irregularity prior to racing. Such vessel will then be reviewed by the Handicap Committee and rated accordingly.

B. EQUIPMENT

All equipment required for the participating vessel is to comply with Federal, State and Local requirements. It is strongly recommended that all sailboats participating in a SBCC sanctioned race on the Great South Bay comply with US Sailing from ISAF Category 4 & 5 equipment requirements. www.ussailing.org/safety/ISAF/cat5.htm

C. INSPECTION POLICY AND PROCEDURES

With the permission of the owners or their representatives, the SBCC measurer or designated assistants may conduct random inspections to confirm compliance with equipment and handicap declarations of any SBCC sailboat racing in SBCC sponsored races. These inspections may also be requested to resolve protest issues.

D. HANDICAPS

The SBCC fleet includes many different types of sailboats. In order to make race participation attractive to as many members as possible, SBCC handicap racing is offered. Under this system every yacht in the fleet is given an SBCC rating. Updated information on the SBCC Handicap process is available on the SBCC web site.

Handicap forms may be obtained from the SBCC web site (www.sbccsail.org) or by contacting the Handicap Committee. Yachts that do not have a handicap form on file will be assigned a base handicap. In this case the committee may give a handicap that is less favorable than that which could be obtained by filing a handicap form. The form must be updated when a change is made to the boat.

E. HANDICAP APPEAL

A skipper who believes the yacht's handicap might deserve correction may request a handicap review by submitting a written request to the Handicap Committee stating the reasons he or she believes a review is in order. The Handicap Committee will respond in writing within 10 days and the new handicap, if any, will take effect as of the date of the written decision. Skippers who are not satisfied with their decision have recourse by appealing directly to US Sailing. The appeal to US Sailing can only be done once in each calendar year. Contact the Handicap Committee or US Sailing for the procedure and current cost.

F. SBCC HANDICAP CLASSES

Spinnaker, Non-Spinnaker and Corinthian classes are scored under the SBCC handicap system. The Non-Spinnaker and Corinthian classes sail inventory is restricted to use of only those sails that can be correctly flown on all points of sail. In these classes, only one headsail may be flown in the foretriangle at any one time. Yachts handicapped as having permanent double head rigs will be permitted to fly their staysail when racing in these classes.

SBCC Notice of Race and Sailing Instructions

Members may change classes as often as they desire, as long as it is done before the warning signal and they inform the Race Committee.

G. RACING NUMBERS

Racing numbers, either US Sailing or SBCC, are required on mainsails, spinnakers, and overlapping headsails with an LP of greater than 130% of J. Numbers shall be integer values with no leading zeros and have high contrast to the sail. This modifies RRS, 77.

H. MEMBERSHIP RESTRICTION

No boat shall race in an SBCC-sponsored event (except invitationals) unless skippered by an SBCC member or associate. However, a member's boat may be skippered by an associate without a member on board only twice in one season, and only once in any series.

II. RACING RULES

A. RULES

The races and series will be governed by the rules as defined in The Racing Rules of Sailing except as otherwise specified in these instructions. Government navigation buoys not stated as being marks of the course may be disregarded at the discretion of the skipper.

B. CHANGES TO SAILING INSTRUCTIONS

Any change to the sailing instructions will be posted before 0900 on the day it will take effect, except that any change to the schedule of races will be posted by 2000 on the day before it will take effect. Changes will be made by posting on the SBCC official notice board which is the SBCC website located at www.sbccsail.org.

III. RACE PROGRAM

A. RACE SCHEDULE

SBCC sponsors numerous races and participates in various invitationals as set forth in the race schedule. See schedule for details and special notes.

B. COURSES

Courses used for SBCC races and some invitationals are set forth at the end of these instructions. They are grouped by starting area as follows:

"Babylon" "Bay Shore" "Nicoli Bay" "Watch Hill" "West Babylon"

For each of these areas a variety of courses are described in Section X, "Race Courses," each bearing a distinguishing number. The course selected will be signaled from the committee boat by the appropriate numeric pennant. In addition, the RC may indicate a "Special" course. For "Special" see the RC for details.

The Race Committee may designate different courses for each class except for the Commodore's, West Island, Foulke, and Smith Races, as set forth in Section X.

C. SERIES RACES

Bay Shore & Babylon Twilight Series – These are four race series as determined by the race schedule. These series will have one throw-out provided the series is at least two races. In the event that only one race can be sailed, one race constitutes a series.

SBCC Notice of Race and Sailing Instructions

Great South Bay Yacht Racing Association (GSBYRA) Race Week - This is a multi-day event. All yachts must register with the host club and pay a registration fee. Check the Masthead for details or inquire with the GSBYRA.

Fall Series 1 & 2 – A two race series held in the fall.

D. SPECIAL RACES & EVENTS

Ed Brooks Memorial New Year's Race – This race takes place on New Year's Day with the starting area off the Babylon Village dock. Post race awards and festivities are usually held after the race. Race awards begin after 1500 hours.

East Cup – This is an event jointly run between the SBCC and the Wet Pants Association. Race awards will be given at the Wet Pants Association facility.

Babylon Yacht Club July Invitational Series - This is a multi race series with no throw-outs. The courses, starting sequence, and other race instructions will be provided by the Babylon Yacht Club and will be available from the committee boat on station prior to the first race or at the Babylon Yacht Club. You must register with the Babylon Yacht Club to race the Babylon Yacht Club July Invitational Series.

Single-Handed Creepstakes - Only the skipper is allowed aboard during race. Two classes: 27 feet LOA and over; and under 27 feet LOA. Non-Spinnaker only. Y Flag is in effect for the race - PERSONAL FLOTATION DEVICES MUST BE WORN.

Turkey Race - This is the season finale with an after-race gathering at a place to-be-announced by the Regatta Committee.

Sayville Yacht Club (Jack's Trophy) - This is a two-race series sailed over two days. It will be scored by the SYC as the arithmetic sum of the corrected times of the yachts participating in both races. A party is scheduled that Saturday night for all participants who pre-register. See SYC race committee for a handout and details and register with the SYC.

Spring Family Race - A Non-Spinnaker race leaving from Watch Hill Sunday morning. Crew must sleep aboard their yacht Saturday night at Watch Hill. Start time to be announced by committee boat at dock.

Fall Family Race – A Non-Spinnaker race leaving from the Atlantique Boat Basin Sunday morning. Crew must sleep aboard their yacht Saturday night at the Atlantique Boat Basin. Start time and course may be published in the Masthead and will be announced by committee boat at dock.

West Island Race – This race originates in Bay Shore, circumnavigates West Fire Island, and may be sailed in either direction.

SBCC/BYC Babylon Cup – An event run jointly by the SBCC and the BYC. A get-together will be held at the BYC Clubhouse, including trophy awards. Check the Masthead prior to the event.

SBCC Notice of Race and Sailing Instructions

West Cup – A Friday-evening event held in conjunction with the Unqua Corinthian Yacht Club and the SBCC. A post race party at the UCYC will follow the race. Check the Masthead prior to the event

Foulke Trophy Race – Also known as the night race. Approximately 30 miles with a late afternoon start. Yachts will start at different times based on their handicaps. The race will be scored 'Time-on-Distance.'

IV. RACE SCORING AND TROPHIES

A. SCORING METHOD

SBCC races will be scored using the time-on-time method unless the note for an individual race states some other method. A time factor is obtained using a formula based on handicap and elapsed time. This time allowance is then multiplied with the yacht's elapsed time yielding the corrected time. The yacht with the lowest corrected time is the winner.

The Corrected Time (CT) is computed from the Elapsed Time (ET), the boats handicap (HC) and a factor, B. The formula used for CT is the following, where the times are expressed in seconds:

CT = ET X 650/[B+HCP] where B is defined as follows:

650 for an average wind speed of less than 8 knots

550 for an average wind speed of 8 to 15 knots

480 for an average wind speed of greater than 15 knots

In determining the winner of the perpetual trophies (Section IV. F), the race scorer will apply an adjustment between the winner of the spinnaker class and non-spinnaker class if it is determined that the spinnaker class carried the spinnaker to advantage for at least one third of the race.

Preliminary race results are available to each participating skipper shortly after each race by e-mail. The official results are printed periodically in the Masthead and posted on the SBCC web site.

B. SERIES SCORING

The Twilight Season Championship Series and each of the individual twilight series will be scored using the Performance Gradient System (G), developed by Bill Grauer. The Performance Gradient is calculated for each boat, in each race, based on the following formula:

$$G = 1 - [(p - 1)/(n + 1)] - [1/(2(n - 1))];$$

Where *p* is the boat's finish position (1 for first place, 2 for second place, etc.), and *n* is the number of starters in the race. The details and rationale behind the Performance Gradient System can be found on the SBCC website at: www.sbccsail.org/The Performance Gradient System.pdf.

The Performance Gradient will therefore be a number greater than zero and less than one. Boats that did not come to the starting area, that did not start, did not finish, retired after finishing, or were disqualified shall be given a *p* equal to *n*+1 (number of starters in the race plus one). Rule A9 will not apply for series that use the Performance Gradient System.

SBCC Notice of Race and Sailing Instructions

In general, for a series in which there are no throw-outs, the boat's *G*'s are added together and then divided by the number of races to obtain an Average *G*, or *AG*. The boat with the highest *AG* wins. For a series that uses the best *X* races, the top *X* races are added together and divided by *X* to derive an *AG*.

For the individual Twilight Series, there will be one throw-out race. The *G*'s earned for each remaining race are added together. The total *G* is then divided by the number of races counted to derive *AG*. There shall be three Twilight Season Championships: Bay Shore, Babylon Spin and Babylon Non Spin. The Season Champion in each of these shall be the boat with the highest season *total AG* for that venue/division.

C. SERIES TIE BREAKER

Ties for a series shall be broken in accordance with RRS, A8.

D. SERIES SCORING FOR COMMITTEE BOATS

Boats that serve as the committee boat for one race in a series will receive a *G* for that race based on the average of the *G*'s earned in the other races in which it was a starter, as follows.

There must be at least two races available to compute an average *G*. If the committee boat (CB) does not have at least two races in which it was a starter then the CB will not get an adjustment for the race and instead will get a *G* computed with a *p* equal to *n*+1. However, if the CB has two or more races in which it was a starter, then all the races started (up to a maximum of the number of races used for computing the series score) will be used to compute the average *G*. Thus, for a four race series in which one throw out is allowed, and if the CB did all the other three races, then the CB will receive an adjustment equal to the average *G* from the three races sailed. Or, if the series is the best seven out of nine, and the CB did all the other eight races, then the best seven races will be used to determine the average *G* for the CB adjustment.

The committee boat will only receive the adjustment for one committee assignment in a series. If a boat does more than one assignment, the adjustment will be given to that race which is most beneficial to it.

The *G* for the CB adjustment will be included in determining the series standing, just as if the CB had actually raced in that race with the average *G* adjustment.

E. RACE TROPHIES

Trophies for individual SBCC races (when not part of a series) will be awarded to each class, according to the following schedule:

Number of Starters	Trophies for
2 or 3	1 st
4 through 6	1 st and 2 nd
7 through 14	1 st , 2 nd , and 3 rd
15 or more	1 st , 2 nd , 3 rd , and 4 th

In any SBCC series, the greatest number of starters in any race will govern the number of trophies awarded for that series.

F. PERPETUAL TROPHIES

Perpetual trophies are awarded for one year only. They are awarded to the SBCC yacht with the best-corrected time based on the method specified in section IV. A. Except for the Pearsall Cup.

SBCC Notice of Race and Sailing Instructions

The Club will award six perpetual trophies, as follows:

Commodore's Cup - Best corrected time in the Commodore's Cup race.
Cruising Club Crock - Best-corrected time in the Around Long Island Regatta scored with SBCC Handicaps.
Deale Trophy - Best corrected time in the West Island race.
Foulke Trophy - Best corrected time in the Foulke Trophy race (night race).
Governor's Cup - Best total score for the Commodore's Cup, West Island and Foulke Trophy races.
Smith Trophy Distance Race - Best corrected time in the Smith Trophy race.
Pearsall Cup - Best corrected time for the West Cup race.

It is the responsibility of the winner of the perpetual trophy to return it by October 1st to the Trophy Chairperson for engraving with the following year's winner. Keeper cups are given to winners of these trophies and their names are engraved on the perpetual trophy.

V. COMMITTEE BOAT ASSIGNMENTS

A. SERVING AS COMMITTEE

The SBCC depends upon the cooperation of all members. Being the Committee Boat for a race is an important responsibility. Reliable, timely, and accurate performance is essential. Prior to their race, Race Committees should contact Scoring to arrange reporting of results.

Race Chairpersons are assigned by the Regatta Committee, and listed in the Race Schedule. These assignments are obligatory.

B. CHANGES

A Race Chairperson may switch assignments with another Race Chairperson provided that the Regatta Captain is notified at least 24 hours before the race. Arranging such changes is the sole responsibility of the assigned skipper and does not relieve him or her of responsibility.

C. PENALTIES

Any Race Chairperson who willfully fails to do his or her assignment shall not be scored in any SBCC race for a period of one year from the date of his or her scheduled Committee Boat assignment. As an alternative penalty, a Race Chairperson who failed to do his or her race assignment for the first time in the racing season will be scored in SBCC races after payment of a \$100 fine payable to the SBCC.

VI. STARTING LINE AND FINISHING LINE PROCEDURES AND RULES

A. CLASS STREAMERS

Racing yachts are required to fly streamers from their standing backstays. Streamers should measure 4"x18".

Creepstakes Class		All Other Races	
Class	Color	Class	Color
27 ft. LOA and over	Red	Spinnaker	Red
Under 27 ft. LOA	Blue	No-Spin	Blue
		Corinthian	Yellow

Failure to display the appropriate streamer may be considered grounds for disqualification.

SBCC Notice of Race and Sailing Instructions

B. CODE SIGNALS

The code flags below are special SBCC course flags:

- R** - Sail the designated course in the REVERSE direction. Leave or round all marks on the opposite side.
- T** - Sail the designated course TWICE around.
- U** - Sail the designated course THREE times around.
For T and U round the pin /X-Mark on the same side as the next mark of the course. For Bay Shore course #2 this instruction does not apply.
- V** - Finish at the Babylon Y.C. dock. This is not recommended for Twilight Races.

The following Racing Rules of Sailing (RRS) code flags are some of the more common race signals used during SBCC conducted races. While not all signals are listed, racers are expected to know all of the race signals and their definitions.

- L** - Come within hail for instructions. This signal is accompanied by one gun.
- S** - When flown after the start, (accompanied by two guns), finish between the Committee Boat and the mark where the course is shortened. For this purpose the mark is the pin and is no longer a turning mark.
- X** - Individual Recall. This signal is accompanied by one gun.
- Y** - Personal buoyancy devices are required. This signal is accompanied by one gun.

C. STARTING

Races will be started in accordance with Rule 26, as summarized below.

Signal	Flag and Sound	Minutes before starting signal
* Warning	Class flag and 1 sound.	5
Preparatory	P flag and 1 sound.	4
One-minute	Remove P flag and 1 long sound.	1
Starting	Remove class flag, 1 sound.	0

* Approximately one minute before the warning signal for the first class to start, the RC will make 3 or more, quick sound signals.

The Race Committee may utilize a 'keep-off' (anti-barging) buoy. If one is used, this is not a temporary or accidentally attached object, and is therefore part of the committee boat.

D. STARTING SEQUENCE

The following class flags shall be used, and the classes will be started in the following order.

Class Flag	Regular Start	No - Spin Start	Creepstakes Start
Red	Spin	N/A	LOA ≥ 27'
Blue	Non-Spin	Non-Spin	LOA < 27'
Yellow	Corinthian	Corinthian	LOA < 27'

At the starting signal, the Race Committee may announce "all clear" if no boat is on the course side of the starting line.

SBCC Notice of Race and Sailing Instructions

E. STARTING LINE ETIQUETTE

Racing skippers are reminded to stay clear of the starting line until the Preparatory Signal for their class. Classes not starting are to remain clear of all yachts in the division before them. Failure to do so may result in a protest that may lead to a disqualification. No yacht will be disqualified without first being given a direct and specific written warning.

F. RECALLS

As per The Racing Rules of Sailing published by the US Sailing Association (Rule 29). Yachts OCS (On the Course Side) will be penalized by having 30 minutes added to their elapsed time. This modifies RRS 28.1.

G. FINISHING

The finish line is determined by the "X" mark (or buoy) and a blue flag on the Committee Boat or Committee Platform.

H. VHF COMMUNICATIONS

VHF radio watch shall be maintained during a race utilizing Channel 72 for communication. Radio communications may be utilized to relay information on unusual situations during races such as postponements, recalls, withdrawals, etc. However, Race Committees may not always use VHF radio so it should not be relied on as the sole means of communication. Racers are requested not to initiate communications with the Race Committee from the time of the warning gun to the time that the last class starts.

I. OTHER INFORMATION

Contact the Race Committee for that race or check the SBCC web site for any last minute information. www.sbccsail.org

VII. TIME LIMIT

The time limit for each race is stated in the notes to the Racing Schedule. The time limit for all classes starting after the first class will be extended so as to allow all classes to have the same amount of racing time. If any yacht finishes within the time limit for her class, it is a race for her class. Yachts finishing after the Committee Boat has left its station should record their time and report it to the Race Committee as soon as possible.

VIII. PROTESTS AND REDRESS

The Protest Committee will only entertain protests made in conformity with U.S. Sailing Rules 61, 61.1, 61.2 and 61.3. Requests for redress must conform to Rules 62, 62.1, and 62.2. Rule 61.2 Protest Contents, "A protest shall be in writing," is amended to "a protest shall be in writing using only a U.S. Sailing Protest Form". Requests for redress shall also be submitted in writing on a U.S. Sailing Protest Form, which amends Rules 62.2 to the extent it presently provides "the request shall be in writing." The time limit for protesting or requesting redress is one (1) full business day after the last boat in the race finishes, except where the rules provide otherwise. The protest/request for redress is to be mailed, showing a postmark by the postal service, or e-mailed to the Protest Chairman within the time limit. The Protest Committee will attempt to hold a protest/redress hearing by the second Monday after the time limit has expired. If a party to the hearing of a protest or request for redress does not come to the hearing, the Protest Committee may nevertheless decide the protest or request. A party may appear at a hearing through its representative by telephone conference provided arrangements to do so are made with the Protest Chairman 24 hours prior to the scheduled hearing date.

SBCC Notice of Race and Sailing Instructions

IX. SAFETY

It is the exclusive responsibility of each skipper to decide whether or not to start, continue, or drop out of any event. The South Bay Cruising Club does not assume any liability for the decision of any participant. The Board of Governors of the South Bay Cruising Club recommends that all owners and skippers carry liability, as well as hull insurance, to protect all parties from the financial consequences of an accident.

For answers to questions regarding minimum U.S. Coast Guard equipment requirements, contact: **Coast Guard Safety Info Line**, weekdays between 8am and 4pm 1-800-368-5647.



SBCC Notice of Race - Race Courses

X. RACE COURSES

COURSE INSTRUCTIONS

1. When passing through the Robert Moses Causeway, the center span must be used.
2. When the designated course is to be sailed twice around, the "X" mark is a mark of the course the second time around. It is to be rounded on the same side as the next mark of the course unless otherwise specified.
3. For all Yacht Club Invitational races please see special Sailing Instructions for the event.
4. All marks are to be rounded or left on the side indicated.
5. The wind directions listed to the right of each course serve as an approximation of the suitability of that course under current wind conditions. Every attempt will be made by the Race Committee to select a course with a balanced upwind start.

BABYLON COURSES

Start and Finish established by the Race Committee (RC); at Willets Creek; off West Islip Marina; or (in the case of course 3) at "9". If finishing at the Babylon Yacht Club dock, the RC shall display code flag "V". If it is used as a mark of the course, leave "9" to starboard the last time it is rounded when finishing at the Babylon Yacht Club dock. It is not recommended that code flag "V" be used for twilight races. DO NOT RUN A DOWNWIND START.

MARKS

- "X" an Orange or Yellow SBCC Special Buoy
- "1" Flashing Green No. 1 in Great Cove
- "3" Flashing Green No. 3 off Bayberry Point
- "6" Red Nun No. 6 just east of Robert Moses Causeway
- "9" Flashing Green No. 9 off Oak Island Channel
- "11" Flashing Green No. 11 off Bay Shore

COURSE 1

1.8 nm SW Wind
Start
"9" (stbd)
Finish

COURSE 4

5.0 nm SE Wind
Start
"6" (port)
"X" (port)
"9" (port)
Finish

COURSE 2

4.2 nm SW Wind
Start
"9" (port)
"6" (port)
Finish

COURSE 5

6.0 nm SW Wind
Start
"9" (port)
"6" (port)
"X" (port)
"9" (port)
Finish

COURSE 3

4.2 nm N Wind
Start between RC and #9
"X" (stbd)
"6" (stbd)
Finish between RC and #9

COURSE 6

7.4 nm SW Wind
Start
"9" (port)
"1" (port)
Finish

SBCC Notice of Race - Race Courses

COURSE 7

7.5 nm N Wind
Start .9 nm south of
West Islip Marina
"X" (port)
"9" (port)
"11" (port)
Finish

COURSE 8

9.9 nm SW Wind
Start
"9" (port)
"11" (stbd)
"3" (port)
"1" (port)
"6" (stbd)
Finish

COURSE 9

10.0 nm SE Wind
Start
"6" (port)
"11" (stbd)
"3" (port)
"1" (port)
"X" (port)
"9" (port)
Finish

BAY SHORE COURSES

Start and Finish established by the Race Committee 1/3 nm southeast of the Brightwaters Canal entrance (40° 42'00.93"N, 73° 14'42.08" W). For northerly wind directions establish a starting area at #11 or #10, using it as the pin. DO NOT RUN A DOWNWIND START.

MARKS

- "X" An Orange or Yellow SBCC Special Buoy
- "1" Flashing Green No. 1 in Great Cove
- "3" Flashing Green No. 3 off Bayberry Point
- "4 NC" Flashing Red No. 4 in North Channel
- "6" Red Nun No. 6 just East of RM Bridge
- "7 WC" Flashing Green No. 7 in West Channel
- "8 WC" Red Nun No. 8 in West Channel
- "8 NP" Flashing Red No. 8 off Nicoll Point
- "9 NP" Green Can No. 9 off Nicoll Point
- "9" Flashing Green No. 9 off Oak Isl. Channel
- "10" Flashing Red No. 10 in West Channel
- "11" Flashing Green No. 11 off Bay Shore
- "19" Flashing Green No. 19 off Point O' Woods
- "24" Flashing QR Red No. 24 in East Channel
- "32" Red Nun No. 32 off Sayville
- "EW" Green Flashing Red & Green EW off Saltaire

COURSE 1

5.7 nm NW Wind
Start between RC
and "10"
"X" (stbd)
"3" (stbd)
"10" (stbd)
"X" (stbd)
Finish between RC
and "10"

COURSE 2

3.5 nm N Wind
Start between RC
and "11"
"1" (stbd)
"8WC" (port)
"7WC" (stbd)
"8WC" (stbd)
Finish between RC
and "11"

COURSE 3

5.2 nm NE Wind
Start between RC
and "10"
"3" (port)
"1" (port)
"10" (port)
"3" (port)
Finish between RC
and "10"

SBCC Notice of Race - Race Courses

COURSE 4 4.8 nm E Wind Start "4NC" (stbd) "11" (stbd) Finish	COURSE 5 3.5 nm SE Wind Start "10" (port) "3" (port) Finish	COURSE 6 5.8 nm SW Wind Start "6" (port) "11" (stbd) "3" (port) Finish
--	---	---

COURSE 7 6.5 nm SW Wind Start "6" (port) "11" (stbd) "3" (stbd) "10" (stbd) Finish	COURSE 8 9.0 nm E-SE Wind Start "8 NP" (stbd) "4 NC" (port) "10" (stbd) Finish	COURSE 9 9.0 nm SW Wind Start "6" (port) "X" (port) "6" (port) "11" (stbd) "3" (port) Finish
--	---	---

BAY SHORE COURSES (Cont.)

COURSE 0 9 nm SE Wind Start 8 WC" (port) "10" (stbd) "4 NC" (port) "1" (port) "7 WC" (stbd) Finish	COURSE 0-1 4.1 nm SW-W Wind Start "6" (port) "1" (port) Finish	COURSE 0-2 4.2 nm SW-W Start "6" (port) "11" (Port) "1" (Port) Finish
---	--	--

WEST ISLAND Counter-Clockwise 14.4nm Start (Bay Shore Area) "10" (port) "EW" (port) "8" (stbd) "19" (port) "9 NP" (port) "4" (port) "10" (stbd) Finish	Clockwise 14.4nm Start (Bay Shore Area) "10" (port) "4" (stbd) "9 NP" (stbd) "19" (stbd) "8" (port) "EW" (stbd) "10" (stbd) Finish
--	---

FOULKE 29.4 nm Start "9" (port) "11" (stbd) "3" (stbd) "36" (port) "4" (port) Finish

SBCC Notice of Race - Race Courses

COURSE D1 17.4 nm SE Wind Start "7 WC" (port) "1" (stbd) "4 NC" (stbd) "9 NP" (stbd) "19" (stbd) "8 NP" (port) "4" (port) Finish	COURSE D2 18.9 nm SW Wind Start "6" (port) "11" (stbd) "3" (stbd) "32" (stbd) "24" (stbd) "4 NC" (port) Finish
---	--

NICOLL BAY and WATCH HILL COURSES

Start and Finish established by the Race Committee in Nicoll Bay
MARKS

"X"	An Orange or Yellow SBCC Special Buoy
"4 NC"	Flashing Red No. 4 in North Channel
"4 RC"	Flashing Red No. 4 in Range Channel
"8 NP"	Flashing Red No. 8 off Nicoll Point
"9 NP"	Green Can No. 9 off Nicoll Point
"8"	Flashing Red No. 8 off West Fire Island
"10"	Flashing Red No. 10 in West Channel
"19"	Flashing Green No. 19 off Point O' Woods
"24"	Flashing QR Red No. 24 in East Channel
"30"	Red Nun No. 30 in mid-Nicoll Bay
"34"	Flashing Red No. 34 off Brown Point
"35"	Flashing Green No. 35 off Blue Point
"EN"	Flashing Green, Green/Red EN in mid-Nicoll Bay
"EW"	Green Flashing Red & Green EW off Saltaire

NICOLL BAY COURSES

COURSE 1 4.9 nm Start "EN" (stbd) "8 NP" (stbd) Finish	COURSE 2 5.6 nm Start "8 NP" (port) "30" (port) Finish	COURSE 3 5.6 nm Start "EN" (stbd) "4 RC" (stbd) Finish
COURSE 4 6.2 nm Start "4 RC" (port) "30" (port) Finish	COURSE 5 7.5 nm Start "8 NP" (port) "EN" (stbd) "24" (stbd) Finish	COURSE 6 12.3 nm Start "8 NP" (port) "EN" (stbd) "24" (stbd) "4 NC" (stbd) "9 NP" (port) Finish

SBCC Notice of Race - Race Courses

NICOLL BAY COURSES (cont.)

COURSE 7

16.9 nm

Start

"19" (stbd)

"9" (port)

"10" (port)

"4 NC" (stbd)

"9 NP" (port)

Finish

WATCH HILL COURSES

Start established by the Race Committee 1/2 nm west of the north end of the channel to Watch Hill.

COURSE 1

7.9 nm

Start

"34" (stbd)

"35" (port)

"EN" (stbd)

Finish

COURSE 2

12.4 nm

Start

"34" (stbd)

"35" (port)

"EN" (stbd)

Finish

WEST BABYLON COURSES

Start and Finish established by the Race Committee (RC) in the vicinity of buoys 4 and 5 in the East West Channel in West Babylon. DO NOT RUN A DOWNWIND START.

MARKS

"X" an Orange or Yellow SBCC Special Buoy
"6" Flashing Red No. 6 in Fox Creek Channel
"9" Flashing Green No. 9 off Oak Island Channel
"11" Flashing Green No. 11 in East West Channel
"3" Flashing Green No. 3 in East West Channel

COURSE 1

4.2 nm

Start

"6" (port)

"9" (port)

Finish

COURSE 2

4.6 nm

Start

"11" (port)

"9" (port)

Finish

COURSE 3

4.0 nm

Start

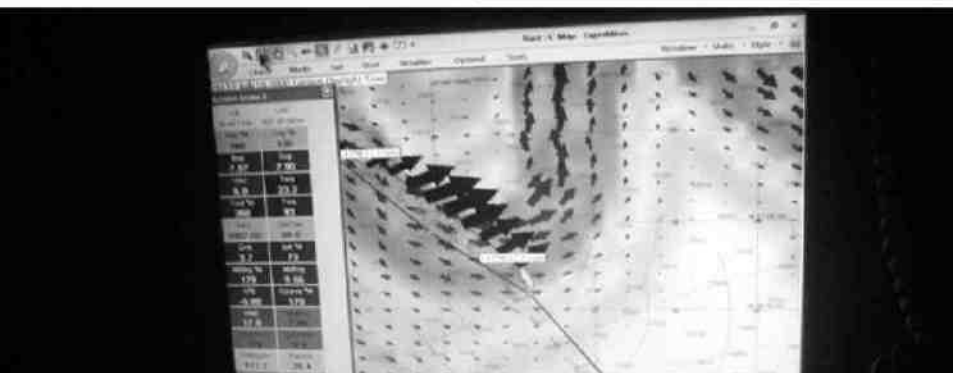
"6" (port)

"3" (port)

Finish



2010 Newport Bermuda Race from Bob Forman



The three photos are from the 2010 Newport Bermuda Race. The first photo is of Barry Dwyer, son of former Commodore Bill Dwyer, who as our bowman is totally fearless and a great sailor. Our racing sails are 3DL molded sails from North Sails. There is a Mylar film on both sides that are bonded to Kevlar threads in the middle. They have a great shape until they disintegrate. They are particularly susceptible to problems at the reef points. The reef folds the sail and tends to be the point that delaminating starts and pieces of Mylar start to fly off. The fix for this is to apply sticky back Kevlar over the spot where the Mylar has come off. Here we have hoisted Barry up on the boom with a wing halyard to fix the problem. We also have a safety line on Barry in case he flies out off the boom. What you cannot see here is how we were flying and bouncing off waves.

The last two are from a gale we experienced during the Race, while crossing the Gulf Stream. The second photo is my son Trip driving on that inky black night with gale force winds blowing salt spray off the tops of 10ft waves. The third photo is the computer screen showing how the predicted current was not doing what was forecasted. The Stream is not a static river but is constantly changing. We had expected to catch a nice SE meander; instead, what happened was that the Stream was starting to flatten out and was flowing more West to East. The large arrows are what we were actually experiencing; at times we had over 5 knots of current to the East.

2010 Greenport Ocean Race from Harry Manko

This year saw the crew of *Full Circle* compete in the Whitebread and Greenport Ocean Races. It was the first time she ever left Great South Bay under my command. The delivery to the races and back to Bay Shore took about thirty-five hours, nearly more than the duration all of the races done with the Club this past season!

The Greenport Ocean Race is actually a resurrection of the Brooklyn Ocean Challenge Cup, deeded in 1904 by William Randolph Hearst. The first race was held in 1905 with a course that ran from New York City to Hamptons Roads, Virginia. Ultimately, the prize, a silver trophy donated by Hearst himself, was deeded to the Chinese Yacht Club in Greenport in 1953. One of our club's former members, Jim Ryan, led the charge to bring this race back to life. This would be its third year running in the new venue.

Held on October 2, 2010, the seventeenth running of the Whitebread saw a total of 113 boats competing under a crystal clear autumn sky amid a fresh northerly breeze. We didn't impress the east-enders in this race around Shelter Island, attaining only sixth place in our class, and 38th overall, but it was great practice for the upcoming ocean race.

About 26 boats signed up for the Greenport Ocean Race, ranging from an 80' Maxi, *Kialoa V*, to a 31' trimaran, *Three Little Birds*. We had a great group of people for the race: Dave Hyer and his son, David, John Schroeder, Greg Schneller, Dave Becker, Ernest Prescott, and Dave O'Donnell. We knew that the competition was good, and despite flawless boat handling this race was long enough at ninety miles to invite a good amount of uncertainty about our chances, particularly when we considered the competition we would face.

The first gun was at 1300 hours on October 8, 2010. The winds were gusting to 20 knots for the first leg – a spinnaker run. The breeze and waves continued to build all the way to Block Island. *Full Circle* was averaging high 11-12 knot speeds over ground, and hit 13.6 knots. We suffered one knock-down before retiring the chute, and later had to do a quick repair on the main before rounding 1BI for the beat back home.

Hours and hours of close-hauled sailing into waves, coming off the tops and pounding the boat down into the troughs was the norm until we tucked into the Forks. After a few more hours we crossed the finish line. Elapsed time: 11.74 hours.

Securing at the Greenport Village dock we saw that several other boats were already there, celebrating the completion of a difficult race. For me it was nothing short of salvation. Scuttlebutt on the dock was that the win would go to *Barleycorn*, *Dark and Stormy*, or *Full Circle*. Of course we were stoked, but we would not find out until the next day that we would get second place in our division, and fourth overall.

This race tested everybody. The conditions forced several boats to withdraw, and a king's ransom in sail inventory was destroyed. While we took some blows, we came away pretty much unscathed, and satisfied that we sailed this race very well.



SBCC 60th ANNIVERSARY RETROSPECTIVE

from Tom Gotard, Dennis Krug, and Mike Duffy

Illustrations are from the Club's Roger Ramsdell Collection. All other materials in the Early Years Retrospective were taken directly from early SBCC Yearbooks. Please consider loaning or donating additional historical materials for our archive.

Much water has flowed under the keel since our launching in 1951. Now, with sixty exciting years of fun and experience behind us, it would be well to look at our wake, determine our present position, and think of the course that lies ahead.

From the 1952 Yearbook

Cruising

From all reports it does not appear that our boats got very far afield in 1951. Several got out to Block Island and elected to return via the Sound and East River. Others seemed satisfied to unstep their masts at Shinnecock Canal and go to Shelter Island.

Racing

The first Annual West Island Race on August 5th was a great success. A fleet of 36 yachts made quite a spectacle as they started under ideal sailing conditions.

Handicap Rule

The SBCC Handicap Rule is a variation of several other widely used Rules with certain bonuses added which the Committee felt were necessary for our heterogeneous fleet.

The Fleet

There are now about 60 auxiliaries registered in the club fleet. It is hoped that this yearbook will serve as a veritable "Lloyds of the Bay".

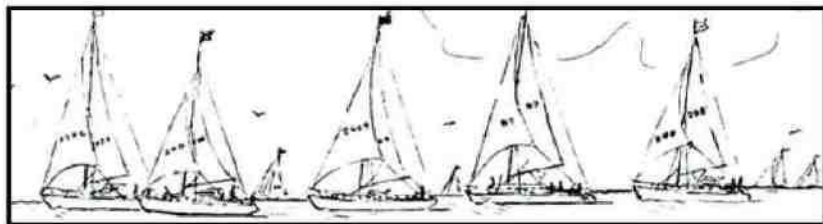
From the 1953 Yearbook

The Fleet

Our sophomore year saw the membership increase to 120 members and the fleet grow to 65 yachts.

Cruising

Not only was the burgee seen far and wide on the pages of Lloyd's Yacht Register but also from the masthead of many of our fleet. The Club cruise to Shinnecock Bay provided fun and laughs, for many and it was reported that Alka Seltzer was needed more than dramamine.



Ships Log The Early Years



Commissioning Day at BYC



From the 1955 Yearbook

Third Annual Cruise

The big event this year was the stepping and un-stepping of masts at Shinnecock Canal. Great excitement was provided when a catboat attempted to pass under the railroad bridge at full speed with her mast still stepped. Sparks flew, the bridge shook, and the cat bounced off undamaged.

Race Results for 1954

The season wound up with a new race for the women only, and was won by Maureen Boettger in the MAUMAC. Some of the skippers were amazed at how fast their boats could go and believed it was due to the efforts of the competent male crews!

Entertainment Log for 1954

This is one club program that just seems to supply its own fuel and logs off the knots at a lively rate. The first event was the annual dance held at the Southward Ho Country Club and it was bigger and better than ever before with over one hundred and sixty guests.

Cruising

Deep water craft will head east and the skimmers will go west via Sebonac and the canal.

From the 1958 Yearbook

Fleet

This year 25 new boats were added to the fleet. At least ten boats are a-building by their owners.

Racing Information

As in the past, all races will be sailed under North American Yacht Racing Union rules (with the exception of the regulation banning burgees and flags on racing craft) which provide that a yacht's time will be taken when any part of her hull crosses a finish line.

Summary of 1957 Activities

Perhaps it was a good omen, but the 1957 season opened with a cloudless Commissioning day, attended by a fleet of more than 50 craft, seven bushels of clams, and Miss Rheingold; and it proved to be one of the most successful years of Club activity to date.



Ships Log The Early Years



Rebel



Amberjack



Hispanola



Independence



Garaldo



Sumaka III

From the 1960 Yearbook

Eight Annual Cruise

Little can be said about the weather conditions on this Cruise that can be printed in a family style yearbook.

West Island Race July 25

32 yachts in four classes sailed this race in a brisk northerly breeze that sent the fleet around the two Fire Islands with all skippers electing to sail the westerly course.

From the 1962 Yearbook

Cruising

35 Boats Make Cruise

Babylon Invitational July 1

It blew! If you'd like to verify the weather conditions, ask Bob Lawrence. One member of his starting crew finished the race in somebody else's boat.

Children's Day September 9

Nobody counted the boats, the kids, or the dogs, but it's reliably reported that the group consumed 127 pounds of frankfurters, 43 boxes of potato chips, and 152 bottles of pepsi cola. Some of the adults drank gin.

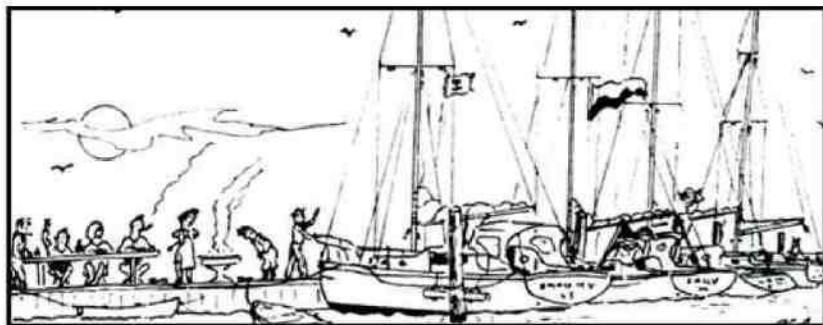
From the 1963 Yearbook

Summary of 1962 Activities

Commodore Beinert shot the gun, upped the flag, downed a glass, and the season was on.

Annual Cruise Draws 25 Boats

Shoaling reports, exaggerated as usual, sent some boats along the outside passage.



Ships Log The Early Years



Dreamboat



Cruisewear



Cruising 1966



Stepping Up



Rafting Up

From the 1966 Yearbook

The yachting year opened almost as soon as the calendar year, with Fred Becker's annual hangover cruise for hardy Babylonians on the "Widgeon".

The Foulke Trophy Race on the 14th was drifting and dreaming. The silverware went to those in the right place, mainly in the lead, that is, when the wind shifted to the west in the wee hours on the leg home.

Columbus Day Weekend had a high of 61 boats at Cedar Beach and 5 stayed through Tuesday, joined by 6 returnees for a beautiful final day. It was a typically enjoyable 56 degrees, 86 proof Fall Cruise.

Handicaps

As in all human activities, cruising can be more fun with a dash of competition—there is nothing quite like coming ahead, whether by going faster, or farther, or longer, or in worse weather.

Competition in a yacht club, however, always dredges up that eternal bugaboo of sailboat racing—how in the name Old Poseidon himself do you arrange a competition between different kinds of sailboats that proves anything except bigger boats usually go faster. Hence—Handicaps.

From the 1967 Yearbook

Cruising

Forty-two boats made the Annual Cruise in one form or another.

Racing

There was a very fine turnout for the Babylon Y.C. Fall Series on September 17 and 18, due in part to the first race being the rerun of our Commodore's Cup. Nineteen single-handers went out and raced while sissies stayed inside the dock to keep warm and get a head start on the party on a puffy, 20-knot September 24.

From the 1969 Yearbook

Beautiful summer weather got the Annual Cruise off to a good start. The inside or "lazy-dazey" group used the new Shinecock locks and christened the new mast hoist on the north end of the bridges.

More of almost everything—that was the catchphrase for '68. More races, cruises, weekend rendezvous and parties filled the club calendar. Committees had to be enlarged to cope with them. No less than 70 yachts crossed the starting line for the West Island Race. Fifty—seven participated in the Annual Cruise.

Ships Log The Early Years



1968



Errant



Snark



Lady Lou V



Triumph



Chance

From the 1970 Yearbook

REVIEW OF 1969 ACTIVITIES

Our spacemen traveled a quarter of a million miles to reach the moon—and their elapsed time just about matched the time our skipper took to journey from Smith's Point to Block Island. What exciting times we live in...we can find solitude in our sport, in a world that is growing so small that astronauts can circle it in 90 minutes. Our club's activities remind us, now more than ever, of the hours of pleasure we are privileged to enjoy in this fast but troubled world.. The year just passed was one of unprecedented success for the South bay Cruising Club. Here is the latest chapter of its activities for the history book.

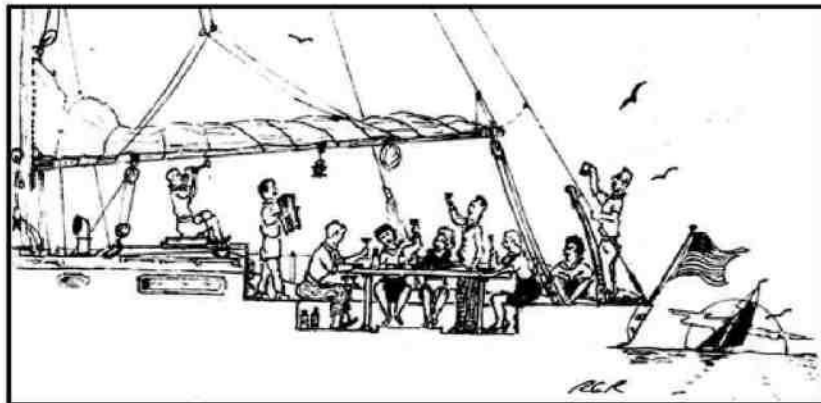
Power boats were allowed to fly the SBCC burgee for the first time, in 1969.

One cruise log concluded: "It was one of the saltiest, best, annual cruises yet, we thought, even though the weather, on the whole, was rainy and mean."

Despite the unusually damp weather, 65 yachts enjoyed the annual cruise. The 1969 annual cruise souvenir, a nautical mile measurer, was presented to skippers at the annual meeting.

Now – despite this startling history of success – we're not A Club With A Mission. We're a club for fun. There's fun in the S.B.C.C. for everyone – whether it's racing, rendezvousing, swimming, cocktail partying, or just plain "messing around in boats". You see, the South Bay Cruising Club is not just him – or her – or them – or us.

It's for YOU. (From the 1958 Yearbook)



Ships Log The Early Years



Talaria



Arabesque



Rendezvous 1962



Race Committee 1968

Two Week Cruise - To New Jersey

June 26 - July 12 from Ed Pshedsky

On June 30, three SBCC boats went south and explored a region of the universe where no man has gone before, or at least not that many.

Barnegat Bay and the bays below it are reputed in these parts to be "too shallow" for sailboats. HA!! Tell that to *Silent P*, *Phoebe Rose* and *Fun Sway*. One day's sail to Manasquan Inlet, and we proved that even a four foot nine inch draft (*Fun Sway* on a good day) could navigate these beautiful waters with little effort.

Destinations abound. Nearly the entire length of the Jersey coast is barrier beach, protecting wide, calm bays; most of the coastal beach is highly developed with houses, hotels, restaurants, yacht clubs, shopping and great old fashioned amusement parks.

Places such as Point Pleasant, Seaside Heights, Surf City, Beach Haven, Ocean City and Atlantic City provide all of the above, and that's just the barrier beach. On the mainland side, great stops include Toms River, and the Metedeconk and Forked Rivers.

Some parts of the bays are wide open, and some are marker-to-marker, like in the state channel. Barnegat Bay stretches south from Manasquan Inlet 17 nm to Barnegat Inlet. Another 18 nm on the inside gets you to Little Egg Inlet. Another 10nm on the ocean and you've made it to Atlantic City through Absecon Inlet. Another 8 nm lands you in Ocean City, which is just 26 nm north of Cape May.

Other than the first leg from Sore Thumb to an anchorage up the Metedeconk River, all of our destinations were moderate distances. We had an ambitious plan, with five major destinations, but a brutal heat wave made us lazy, and a last minute change of plans around a Fourth of July cruise makes it difficult to alter your accommodations.

Despite all the hoopla, we decided we were going to brave Fire Island Inlet. With the help of local knowledge from other SBCC members, we were able to plan a track that guided us through water that never went shy of eight feet at moderately high tide. Apparently the inlet bored a new channel through the spoils of the winter storms.

We spent the early part of our cruise docked at the Seaside Park Municipal Marina, fairly inexpensively, where the dockmaster couldn't do enough for us. It was a reasonable walk to Seaside Heights, where all the action is, with

Two Week Cruise - To New Jersey

great restaurants and that unforgettable, unending amusement park, which was the site of the July Fourth fireworks. Ice cream, pizza, Philly cheese steak and you name it---every 50 feet for a mile. Games, freaks, boardwalk, great food smells - it's all there.

Wherever you cruise, take Rich Troy with you. He and his iPhone answered every question, found us our daily gourmet destinations and navigated all the streets. Not that we didn't have some great home-cooked meals aboard, compliments of Helen and June. Rich pitched in too. He was stag during the week and was joined by Sue on the weekends.

Next stop was Beach Haven which offered restaurants, beach and shopping. From the dock at night, we could see the colorful skyline of Atlantic City. On one or two days, it was so hot that we all enjoyed our air conditioned boats for the hottest part of the day. The weather, if you ignored the heat, was spectacular. It rained once---ONCE! So we all took the junket bus ride to A.C. for a day of eating and gambling. Nobody lost. Even Dave gambled. I broke my own personal, decades old, against the law of averages losing streak. Can't wait to go back.

Our original plan was to continue south to Ocean City, then north to Surf City, with some lay days at each stop. But extra days spent at the first two stops made that impractical, so we started back toward home with a two-night stop at Toms River, at a marina with a pool!

Well rested, we started back the way we came - through some bridges and the Point Pleasant Canal. By noon we were heading north up the coast toward Rockaway Inlet, Sheephead Bay and MARIA'S RISTORANTE(!). Actually, the entire cruise, as far as I was concerned, was just a prelude to Maria's. We all might agree that each of our meals tied for the best Italian meal we ever had. Maria's has become a must on any cruise in that direction. It's also right across the street from the yacht club.

Next day, the final day, we raced the weather all the way home. *Silent P* made it all the way to within 10 minutes from the Patchogue River when the predicted cataclysm hit. Hey, we made it through the dangerous inlet twice with no problem. Let it rain all it wants.

SBCC cruisers should give the Jersey shore a good look next summer. It's a good break from the long sails on the ocean to Shinnecock, Montauk and Block Island - great places, but so familiar. It's fun to explore.

Two Week Cruise - To New Jersey



One Week Cruise - In The Bay

Don't Stop the Music Cruise

If this is Sunday it might be Bellport, or how we spent our summer vacation.

August 8 – 13 from Mike Duffy and Frank Peter

Being members of the South Bay Cruising Club gave us the opportunity to sail on the Bay for a week, so we went on the SBCC One Week Cruise.

After some initial reservations about whether the conditions would be good for anchoring in Bellport, NOAA revised the forecast, and we decided to sail from Great River to Bellport on Sunday, a good sail with clear weather and moderate winds on the beam.

After two days exploring Bellport and the excellent restaurants there, it was time to move on, as we had a barbeque to attend in Atlantique. The winds were light on the nose and we could faintly smell the Eilbeck's burgers, so we hauled anchors around 0600, and motored to Atlantique docks, where we checked in for a couple of days.

Many of the thirty-five SBCC members who docked at Atlantique received a big discount, as Nancy Sherman had arranged the Islip resident rate for all members. Nancy who is an Islip resident received no benefit from this, but like all of us she enjoys helping others.

The Barbeque hosted by the Eilbecks, was great as always, and to provide shade, Fred Golder erected a tent he had brought along. A tent is rarely included in lists of recommended cruising gear, but it sure came in handy. Chefs Matt DeMarco and Don Metznik were both so popular, it was hard to tell which was the favored end of the line.

Beach games Wednesday morning by Della Bucher featured two new events, including disrobing, and all protests were disallowed. Great fun - but a lot of sun, so the ocean was great for cooling off.

The second night in Atlantique featured a "Pot Luck Supper" suggested by the Junior Cruise Captain who is not much of a hand in the galley, but was in need of a home-cooked meal. The food was great and the after dinner show was provided by the newly-formed SBCC Glee Club, under the direction of Chantyman Roger Daisley. The women of the SBCC displayed so much talent that no one noticed that Mike forgot the marshmallows.

On Thursday the show moved on to two locations, with one group going to Oak Island Lead, where transportation to dinner was provided by Jack and Barbara Levitsky aboard *Lady Barbara III*, and some fans went to Captree by auto for the entertainment. Another group sailed directly to Coast Guard

One Week Cruise - In The Bay

Cove for a cocktail hour aboard *Jayne Heir*, hosted by Jack and Jayne Tinelli. It is hard to say which anchorage was more beautiful.

By Friday almost all boats were in Coast Guard Cove for a beautiful day spent visiting with friends by dinghy. The One Week Cruise Wrap Party was hosted by SBCC Yearbook cover models, *Vixen* and *Counterpoint*. At the conclusion the Glee Club gave an outstanding performance to close the show.

Saturday most boats moved on to Hemlock Cove, for the "Pirates of the Caribbean" Rendezvous hosted by Charlie Margeson aboard *Shadow*, followed by the SBCC Champagne Breakfast aboard *Fun Sway* Sunday morning.

Forty-one SBCC boats spent at least one night on the cruise and three boats day-sailed in to join the group. We had excellent weather, great food and outstanding entertainment. Best of all we spent a week with ninety old friends and a half dozen new ones. Don't stop the music! Let's make it a hundred next year.



One Week Cruise - In The Bay



One Week Cruise - In The Bay



Thanks to
The South Bay Cruising Club
Hospitality Committee
for bringing us together



The BLAST



Fall Family Weekend



Boatyard Party



2010 Cruising Awards

The 2010 SBCC Two-Week Cruise to NJ was led by *Silent P's* Helen and Ed Pshedesky. Three (3) boats attended that Cruise. *Phoebe Rose* and *Fun Sway* also attended the entire Cruise with *Silent P*.

The 2010 SBCC One-Week Cruise in the Bay was led by *Loon's* Mike Duffy and *Vixen's* Frank Peter. Forty one (41) boats attended that cruise.

These boats attended a 7- night cruise by staying the Saturday night in the Great River, before the official start of the cruise: *della.calm*, *Grace*, *Lady Barbra III*, *Laurie Jean*, *Loon*, *Miss Liberty II*.

These boats attended the full Cruise plan of 6 nights: *Becky*, *Blue Horizon*, *Captain's Lady*, *Midnight Sun*, *Silhouette*.

These boats attended less than 6 nights but since they attended 3 or more nights of the Cruise Plan, they get full credit for attending the Cruise: *Carefree*, *Heart of Gold*, *Vixen*, *Charisma*, *Galatea*, *Jayne Heir*, *Maggie Lee*, *Njord*, *Tanzanite*, *Class Sea "M"*, *Island Breeze*, *Lady Barbara*, *Summer Home*, *The Sea Ray* (Chris Beach).

These boats attended 1 or 2 nights of the Cruise: *Aeolus*, *Atlantic Rhythm*, *Blaze*, *Celebration*, *Ceol na Mara*, *Espirit*, *Free Spirit*, *Gail Wind*, *Leprechaun*, *Magic Dragon*, *Saga*, *Stealing Time*, *Shadow*, *Counterpoint*, *Runaway*, *Silver Cloud*.



2010 Rendezvous Awards

Boats listed in **bold** were also Rendezvous hosts or co-hosts.

SAIL #	BOAT NAME	COUNT	SAIL #	BOAT NAME	COUNT
581	<i>della.calm</i>	18	144	<i>Njord</i>	7
161	<i>Miss Liberty II</i>	16	73	<i>Silver Cloud</i>	7
60	<i>Fun Sway</i>	14	62	<i>Windswept</i>	7
269	<i>Counterpoint</i>	12	354	<i>Becky</i>	6
Power	<i>Lady Barbara III (L)</i>	11	641	<i>Laurie Jean</i>	6
340	<i>Silent "P"</i>	11	2728	<i>Loon</i>	6
295	<i>Tanzanite</i>	11	430	<i>City Girl</i>	5
130	<i>Vixen</i>	11	22	<i>Dream Voyager</i>	5
1858	<i>Belle Free</i>	10	310	<i>Elaine & Me</i>	5
22222	<i>Blue Horizon</i>	9	718	<i>Flying wasp</i>	5
89	<i>Habanero</i>	9	Power	<i>Galatea</i>	5
5538	<i>Phoebe Rose</i>	9	5345	<i>Mareva</i>	5
675	<i>Shoot'n the Breeze</i>	8	8754	<i>Stealing Time</i>	5
1260	<i>Silhouette</i>	8		<i>Canada Goose</i>	4
2802	<i>Captain's Lady</i>	7	103	<i>Rettsie</i>	4
4201	<i>Eagle's Wings</i>	7	1714	<i>Wind Call</i>	4
156	<i>Grace</i>	7			

The following boats attended 3 or fewer Rendezvous. Boats listed in bold font were also a Rendezvous host or co-host.

Brass Ring, Ceol na Mara, Charlie Noble, Glory, Jayne Heir, Kariana, Maggie Lee, Magic Dragon, Midnight Sun, Runaway, Atlantic Rhythm, Class Sea "M", Drumshambo, Esprit, Free Spirit, Kickin' Back, Miss Gracie, Saga, Shadow, Wild Blue II, Arcadia, Astarte, Busman's Holiday, Carefree, Celebration, Charisma, Classy Lady, Compass Rosie, Déjà Vu II, Dodona, Full Circle, Gracie Rose, Lettuce Buy, Margaret Gale, Mistress, Naiad, Our Time, Sybaris, Rowdy, SummerHome II

Nancy Sherman with *Miss Liberty II* hosted the most Rendezvous events, 2 (two).

The number of boats that attended at least one Rendezvous was 80.

The number of unique Rendezvous hosts was 25.

The most attended Rendezvous were as follows: *Full Circle* 41, *Blue Horizon* 25, *Shadow* 22.

Special thanks go to the members who hosted, or co-hosted, a Rendezvous for the first time: *Tanzanite, Silver Cloud, Flying Wasp, Shadow, Full Circle, Rowdy, Compass Rosie*



2010 Major Awards



Sheila Daytz Award:
Della Bucher
della.calm



**Babylon Twilight
Non Spin Season Champion:**
Rick LaTorre
Radio Flyer



**Babylon Twilight
Spin Season Champion:**
Greg Schneller
Mirage



**Bay Shore Twilight
Season Champion:**
Harry Manko
Full Circle



Ken Kondor Award:
Andrew Hemingway
Flying Wasp

2010 Racing Awards

Invitational and Trophy Races

Babylon Cup

Spin	
<i>Clipper</i>	404
Non Spin	
<i>Mirage</i>	536
<i>Naughty Dog</i>	42371
<i>Flying Wasp</i>	719

Commodore's Cup

Spin	
<i>Amethyst</i>	421
Non Spin	
<i>Blaze</i>	725
<i>Flying Wasp</i>	719
<i>Cherry Pi</i>	14423

West Island Race

Spin	
<i>JT9D</i>	1156
<i>Full Circle</i>	51841
<i>Hooch</i>	329
Non Spin	
<i>Dragon Fly</i>	5861
<i>Amethyst</i>	421
<i>Ceol na Mara</i>	1555

Smith Trophy Distance Race

Spin	
<i>Full Circle</i>	51841
Non Spin	
<i>Blaze</i>	725

Foulke Trophy Race

Spin	
<i>Full Circle</i>	51841
<i>JT9D</i>	1156
<i>Amethyst</i>	421
Non Spin	
<i>Dragon Fly</i>	5861

Discoverer's Race

Non Spin	
<i>Naughty Dog</i>	42371
<i>Cherry Pi</i>	14423
<i>JT9D</i>	1156

Last Chance

Spin	
<i>JT9D</i>	1156
<i>Naughty Dog</i>	42371
Non Spin	
<i>Brokher</i>	759
<i>Rettsie</i>	103
<i>Cherry Pi</i>	14423

2010 Perpetual Trophies

Cary Pearsall Trophy	<i>Amethyst</i> - D. Davies / A. Eppig
Commodore's Cup	<i>Blaze</i> - R. LaBella
Deale Trophy	<i>JT9D</i> - P. Rendich
Foulke Trophy	<i>Full Circle</i> - H. Manko
Governor's Cup	<i>Full Circle</i> - H. Manko
Smith Trophy	<i>Full Circle</i> - H. Manko



2010 Racing Awards

2010 Special Races

Brooks Memorial 2009		West Cup	
SBCC Boats		Spin	
<i>Ceol na Mara</i>	1555	<i>Amethyst</i>	421
Flying Scotts		Non Spin	
<i>FS</i>	920	<i>Dragon Fly</i>	5861
<i>FS</i>	5578	<i>Naughty Dog</i>	42371
<i>FS</i>	4035	Fall Series	
Creepstakes		Non Spin	
Over 27 ft.		<i>Naughty Dog</i>	42371
<i>Full Circle</i>	51841	<i>Brokher</i>	759
<i>Rettsie</i>	103	<i>Flying Wasp</i>	719
<i>Dream Voyager</i>	22		
Under 27 ft.			
<i>Liquid Courage</i>	735		
<i>USA</i>	913		
<i>Radio Flyer</i>	14364		



2010 Racing Awards

2010 Babylon Twilights

Spring Spin		Spring Non Spin	
<i>Mirage</i>	536	<i>Rettsie</i>	103
<i>Clipper</i>	404	<i>Dragon Fly</i>	5861
Summer Spin		<i>Radio Flyer</i>	14364
<i>Mirage</i>	536	Summer Non Spin	
<i>Amethyst</i>	421	<i>Radio Flyer</i>	14364
Mid-Summer Spin		<i>Naughty Dog</i>	42371
<i>JT9D</i>	1156	<i>Whitewater</i>	726
<i>Silver Bullet</i>	42370	Mid-Summer Non Spin	
<i>Mirage</i>	536	<i>Dragon Fly</i>	5861
Late-Summer Spin		<i>Radio Flyer</i>	14364
<i>JT9D</i>	1156	<i>Karma</i>	716
<i>Mirage</i>	536	Late-Summer Non Spin	
<i>Amethyst</i>	421	<i>Whitewater</i>	726
Wrap-Up Spin		<i>Dragon Fly</i>	5861
<i>JT9D</i>	1156	<i>Radio Flyer</i>	14364
<i>Amethyst</i>	421	Wrap-Up Non Spin	
		<i>Radio Flyer</i>	14364
		<i>Dragon Fly</i>	5861
		<i>Whitewater</i>	726

2010 Babylon Twilight Season Champions

Spin	Non Spin
<i>Mirage</i> - G. Schneller	<i>Radio Flyer</i> - R. LaTorre

2010 Bay Shore Twilights

Spring		<i>Dragon Fly</i>	5861
<i>Full Circle</i>	51841	<i>Full Circle</i>	51841
<i>Dragon Fly</i>	5861	Late Summer	
<i>Cherry Pi</i>	14423	<i>Full Circle</i>	51841
Summer		<i>Amethyst</i>	421
<i>Amethyst</i>	421	<i>Cherry Pi</i>	14423
<i>Full Circle</i>	51841	Wrap Up	
<i>Cherry Pi</i>	14423	<i>Cherry Pi</i>	14423
Mid Summer		<i>Full Circle</i>	51841
<i>Amethyst</i>	421	<i>Dragon Fly</i>	5861

2010 Bay Shore Twilights Season Champion

Full Circle - H. Manko

2010 Racing Awards



SBCC Awards History

1951-2010

BLUE WATER AWARDS

	1995	<i>Sailheart</i>	J.McCormack
	1996	<i>Cee-J</i>	J.Rambold/C. Conger
1952	Jack Young	1997	<i>Cee-J2</i> J.Rambold/C. Conger
(Doc Hamlin special award)		1998	<i>Cee-J2</i> J.Rambold/C. Conger
1953	R.W. Bennett	1999	<i>Carefree</i> R.&G. LaTorre
1964	Art Flynn	2000	<i>della.calm</i> D.Bucher
1965	Stuart Baldwin	2001	<i>della.calm</i> D.Bucher
(Ed Macy special award)		2002	<i>Mistress</i> E.Hopkins
1966	Ed Macy	2003	<i>Mistress</i> E.Hopkins
1967	Ed Forsyth	2004	<i>Mistress</i> E.Hopkins
1968	Jack Young (Don Streit	2005	<i>Miss Liberty</i> N.Sherman
& Ed Ricketts special awards)		2005	<i>Fun Sway</i> R.&S. Troy
1969	Chet Phipps	2006	<i>della.calm</i> D.Bucher
1971	Chet Phipps	2007	<i>della.calm</i> D.Bucher
1972	Arthur Sternberg	2008	<i>Miss Liberty II</i> N. Sherman
1973	Bill Milligan	2009	<i>Fun Sway</i> R.&S. Troy
1979	Bob Wissman	2010	<i>della.calm</i> D. Bucher
1980	Edgar Sabbeth		
1987	Russ Columbo		
1990	Bob Forman		
1991	Rich Czach		
1992	Eric Forsyth		
1997	Eric Forsyth		
1999	Eric Forsyth		
2003	Bob Van Tassel		
2004	Parker Revella		
2004	Bob Forman		
2005	William Danilczyk		
2005	Robert Van Tassel		

GREEN WATER AWARDS

1985	Frank & Joyce Holwell
1985	Bill & Barbara Dunleavy
1987	Harry Wilburger
1988	Frank & Joyce Holwell
1989	Roger Goodwin
1992	Mitch & Shirley Silbert
1996	Jack & Barbara Nielsen
1998	Mickey & Barbara Forde
1999	Richard Daytz
2000	Deborah & Parker Revella
2002	Dennis & Adriana Krug
2003	Bruce Kleisler
2005	Dennis & Adriana Krug
2005	John & Corinne Rambold

SHEILA DAYTZ TROPHY

1993	<i>Fenian</i>	E.Simmons
	& <i>Sailheart</i>	J.McCormack
1994	<i>Lady Barbara</i>	J.Nielsen

KEN KONDOR TROPHY

1995	<i>Jam V</i>	J.Dudek
1996	<i>Jam V</i>	J.Dudek
1997	<i>Silver Bullet</i>	J.Reichel
1998	<i>Jam V</i>	J.Dudek
1999	<i>Carefree</i>	R.LaTorre
2000	<i>Jam V</i>	J.Dudek
2001	<i>Jam V</i>	J.Dudek
2002	<i>Slim</i>	B.McLoughlin
2003	<i>Slim</i>	B.McLoughlin
2004	<i>Dragon Fly</i>	J.Davis
2005	<i>Maggie Lee</i>	L.&M. Christiansen
2006	<i>One More Time</i>	M.Duffy
2007	<i>One More Time</i>	M.Duffy
2008	<i>Pandemonium</i>	C.Beach
2009	<i>Lady Jane</i>	D.&J. Glinski
2009	<i>Midnight Sun</i>	D.&J. Glinski
2010	<i>Flying Wasp</i>	A. Hemingway

BROADSIDE TROPHY

Ladies' Day Race (First All Female Crew)

1966	<i>Sea Rover</i>	Nan Hanaway
1967	<i>Lady Lou V</i>	Grace Beinert
1968	<i>Lady Lou V</i>	Grace Beinert
1969	<i>Tranquilizer</i>	Sheila Daytz
1970	<i>Banshee</i>	Pat Kelly
1971	<i>Banshee</i>	Pat Kelly
1972	<i>Banshee</i>	Pat Kelly
1973	<i>Too Much</i>	Jane Muchmore
1974	<i>Banshee</i>	Pat Kelly
1975	<i>Banshee</i>	Pat Kelly
1976	<i>Liebchen</i>	Jane Muchmore

SBCC Awards History

BROADSIDE TROPHY (cont'd)

1977	<i>Summerwind</i>	Charlotte Wissmann	1991	<i>Amethyst</i>	D.Davies
1978	<i>Firefly II</i>	Ginny Smith	1992	<i>Ricochet</i>	C.Svenson
1979	<i>Summerwind</i>	Charlotte Wissmann	1993	<i>Sunrider</i>	H.Smith
1980	<i>Mandalay</i>	Kathy Saxe	1994	<i>What Me Worry?</i>	J.Ryan
1981	<i>Banshee</i>	Pat Kelly	1995	<i>Mirage</i>	G.Schneller
			1996	<i>Amethyst</i>	D.Davies

PATRICIA A. KELLY TROPHY

Ladies' Day Race (First All Female Crew)

			2000	<i>Amethyst</i>	D.Davies
1982	<i>Mandalay</i>	Kathy Saxe	2001	<i>Redwing</i>	J.Morgan
1983	<i>Curlflew</i>	Cindy MacDonell	2002	<i>Brokher</i>	A.Eppig
1984	<i>Lucky Bark III</i>	Susan O'Connell	2003	<i>Cherry Pi</i>	F.Marinaccio
1985	<i>Cherie</i>	Olive Healy	2004	<i>Cherry Pi</i>	F.Marinaccio
1986	<i>Blue Thunder</i>	Cary Pearsall	2005	<i>Brokher</i>	A.Eppig
1987	<i>Orion</i>	Felicity Ryan	2006	<i>Brokher</i>	A.Eppig
1988	<i>Lucky Bark III</i>	Susan O'Connell	2007	<i>Brokher</i>	A.Eppig
1989	<i>Catharsis</i>	Margaret Christiansen	2008	<i>Brokher</i>	A.Eppig
1990	<i>Silver Bullet</i>	Melissa Kennedy	2009	<i>Naughti Dog</i>	J.Reichel
1991	<i>What Me Worry?</i>	Felicity Ryan	2010	<i>Blaze</i>	R.LaBella

CRUISING CLUB CROCK

Character Boat Beauty Contest & Race

1968	<i>Patience</i>	P.DeSaix
1969	<i>Scrimshaw</i>	H.Kahn
1970	<i>Manx</i>	R.Dunlop
1971	<i>Scrimshaw</i>	H.Kahn
1972	<i>Americat</i>	G.Benedict
1973	<i>Americat</i>	G.Benedict
1974	<i>Schrimshaw</i>	H.Kahn

COMMODORE'S CUP

1967	<i>Ark</i>	G.Walsh
1968	<i>Nalani Kai</i>	J.French
1969	<i>Barcarolle</i>	M.Goldsmith
1970	<i>Orient Star</i>	W.Casazza
1971	<i>Merry Ann</i>	W.Cook
1972	<i>Willowpeg</i>	W.Ciocys
1973	<i>Chanson</i>	G.Baldwin
1974	<i>Sandpiper</i>	R.Nehring
1975	<i>Jacqueline II</i>	R.Forman
1976	<i>Jacqueline II</i>	R.Forman
1977	<i>Ghost</i>	R.Logan
1978	<i>Blaze</i>	R.LaBella
1979	<i>Blaze</i>	R.LaBella
1980	<i>Aeolus</i>	R.Graham
1981	<i>Sunrider</i>	H.Smith
1982	<i>Cygnat</i>	B.Finta
1983	<i>Aeolus</i>	R.Graham
1984	(no finishers)	
1985	<i>Firewater II</i>	Baldwin/Crocker
1986	<i>Firewater II</i>	Baldwin/Crocker
1987	<i>Blue Thunder</i>	C.Brice
1988	<i>Merry Ann</i>	W.Cook
1989	<i>White Squall</i>	M.Smith

BEST CORRECTED TIME IN AROUND LONG ISLAND RACE

1979	<i>Flighty Miss</i>	H.Colleran
1980	<i>Merry Ann</i>	W.Cook
1981	<i>Merry Ann</i>	W.Cook
1982	<i>Merry Ann</i>	W.Cook
1983	<i>Force 10</i>	R.Wissmann
1984	<i>Jacqueline II</i>	R.Forman
1985	<i>Alchemist</i>	B.Brownyard
1986	<i>Jacqueline II</i>	R.Forman
1987	<i>Diane</i>	R.Schwartz
1988	<i>Wild Rover</i>	J.Ferguson
1989	<i>Jacqueline II</i>	R.Forman
1990	<i>Barleycorn</i>	B.Brownyard
1991	<i>Barleycorn</i>	B.Brownyard
1992	<i>Ravin'</i>	G.Bottino
1993	<i>Ravin'</i>	G.Bottino
1994	<i>Barleycorn</i>	B.Brownyard
1995	<i>Quest</i>	R.Van Tassel

SBCC Awards History

BEST CORRECTED TIME IN AROUND LONG

ISLAND RACE (cont'd)

1996	<i>Diane</i>	R. Schwartz
1997	<i>Lighthorse</i>	B. Brownyard
1998	<i>Diane</i>	R. Schwartz
2000	<i>Ericsean</i>	K. Padden
2001	<i>Drumshanbo</i>	B. Pittman
2002	<i>Spirit</i>	K. Bogdan
2003	<i>Spirit</i>	K. Bogdan
2004	<i>Spirit</i>	K. Bogdan
2005	<i>Spirit</i>	K. Bogdan
2006	<i>Spirit</i>	K. Bogdan

DEALE TROPHY

1963	<i>Melidi/Jeanie</i>	C. Collis/T. Hangarter
1964	<i>Decatur</i>	R. Schafer
1965	<i>Gemini</i>	J. Ruppe
1966	<i>Broadbill</i>	W. Simonson
1967	<i>Windsong</i>	A. Bertepelle
1968	<i>Gin</i>	R. Seidenspinner
1969	<i>East of Schoodic</i>	D. Keough
1970	<i>Staryker</i>	D. McPherson
1971	<i>Whisper</i>	D. Brown
1972	<i>Leprechaun</i>	H. Post
1973	<i>Deliana</i>	W. Symons
1974	<i>Sandpiper</i>	R. Nehring
1975	<i>Falcon</i>	A. Heckel
1976	<i>Lena</i>	D. Stephani
1977	<i>Ghost</i>	R. Logan
1978	<i>Jacqueline II</i>	R. Forman
1979	<i>Sunshine</i>	V. Kind
1980	<i>Ailanthus</i>	W. Grauer
1981	<i>Ailanthus</i>	W. Grauer
1982	<i>Jacqueline II</i>	R. Forman
1983	<i>Merry Ann</i>	W. Cook
1984	<i>Ailanthus</i>	W. Grauer
1985	<i>Sunrider</i>	H. Smith
1986	<i>Tachyon</i>	D. Cameron
1987	<i>True Love?</i>	L. Becker
1988	<i>Spirit</i>	W. Titus
1989	<i>Cherry Pi</i>	F. Marinaccio
1990	<i>Ailanthus</i>	W. Grauer
1991	<i>Like, Wow!</i>	W. Brooks
1992	<i>Mirage</i>	G. Schneller
1993	<i>Windshadow</i>	L. Costelloe
1994	<i>Ailanthus</i>	W. Grauer
1995	<i>Windshadow</i>	L. Costelloe
1996	<i>Amethyst</i>	D. Davies
1997	<i>Silver Bullet</i>	Kennedy/Reichel
1998	<i>Big Fast Dinghy</i>	J. Mullé

1999	<i>Clipper</i>	P. Rendich
2000	<i>Cherry Pi</i>	F. Marinaccio
2001	<i>Blaze</i>	R. LaBella
2002	<i>Ericsean</i>	K. Padden
2003	<i>Carefree</i>	R. LaTorre
2004	<i>Hooch</i>	B. Kennedy
2005	<i>Brokher</i>	A. Eppig
2006	<i>Clipper</i>	P. Rendich
2007	<i>Hooch</i>	Reichel / Kennedy
2008	<i>Brokher</i>	A. Eppig
2009	<i>Hooch</i>	Reichel / Kennedy
2010	<i>JT9D</i>	P. Rendich

FOULKE TROPHY

1954	<i>Loreli</i>	B. Lawrence
1955	<i>Spindrift</i>	R. Tarr
1956	<i>Tranquil</i>	E. Dannemiller
1957	<i>Tranquil</i>	E. Dannemiller
1958	<i>Spindrift</i>	R. Tarr
1959	<i>Harpoon</i>	R. Wissmann
1960	(no finishers)	
1961	<i>Brandy</i>	R. Paterson
1962	<i>Wanderlust</i>	R. Holzmacher
1963	<i>Jeanie</i>	T. Hangarter
1964	<i>Falcon</i>	A. Heckel
1965	<i>Nirvana</i>	J. Saxe
1966	<i>Fibre Tigre</i>	W. Stone
1967	<i>Godspeed</i>	E. Neale Jr.
1968	<i>Reverie</i>	E. Macy
1969	<i>Merry Ann</i>	W. Cook
1970	<i>Banshee</i>	P. Kelly
1971	<i>Merry Ann</i>	W. Cook
1972	<i>Bold Venture</i>	R. Horn
1973	<i>Starward</i>	J. Moore
1974	<i>Unicorn</i>	L. Casey
1975	<i>Lena</i>	D. Stephani
1976	<i>Strawberry Fields</i>	E. Sabbeth
1977	<i>Dawn Too</i>	D. Jetzcorreck
1978	<i>Ailanthus</i>	W. Grauer
1979	<i>Warlock</i>	S. DeLise
1980	<i>Warlock</i>	S. DeLise
1981	<i>Warlock</i>	S. DeLise
1982	<i>Cygnat</i>	R. Finta
1983	<i>Curlew</i>	D. MacDonell III
1984	<i>Dragon Fly</i>	J. Davis
1985	<i>Blaze</i>	R. LaBella
1986	<i>Firewater II</i>	Baldwin/Crocker
1987	<i>Amethyst</i>	D. Davies
1988	<i>Jacqueline II</i>	R. Forman
1989	<i>Firewater II</i>	Baldwin/Crocker
1990	<i>What Me Worry?</i>	J. Ryan

SBCC Awards History

FOULKE TROPHY (cont'd)

1991	<i>Jacqueline II</i>	R. Forman
1992	<i>Quest</i>	R. Van Tassel
1993	<i>Mirage</i>	G. Schneller
1994	<i>Silver Bullet</i>	J. Reichel
1995	<i>Mirage</i>	G. Schneller
1996	<i>Windshadow</i>	L. Costelloe
1997	<i>Amethyst</i>	D. Davies
1998	<i>Clipper</i>	P. Rendich
1999	<i>Clipper</i>	P. Rendich
2000	<i>Hooch</i>	Kennedy/ Reichel
2001	<i>Cherry Pi</i>	F. Marinaccio
2002	<i>Redwing</i>	J. Morgan
2003	<i>Brokher</i>	A. Eppig
2004	<i>Clipper</i>	P. Rendich
2005	<i>Blaze</i>	R. LaBella
2006	<i>Full Circle</i>	H. Manko
2007	<i>Full Circle</i>	H. Manko
2008	<i>Rettsie</i>	K. Padden
2009	<i>Full Circle</i>	H. Manko
2010	<i>Full Circle</i>	H. Manko

GOVERNOR'S CUP

1966	<i>Lively Lady</i>	B. Max
1967	<i>Godspeed</i>	E. Neale, Jr.
1968	<i>Godspeed</i>	E. Neale, Jr.
1969	<i>Merry Ann</i>	W. Cook
1970	<i>Orient Star</i>	W. Casazza
1971	<i>Merry Ann</i>	W. Cook
1972	<i>Bold Venture</i>	R. Horn
1973	<i>Kandy Bar</i>	W. Dwyer
1974	<i>Ghost</i>	R. Logan
1975	<i>Chanson</i>	G. Baldwin
1976	<i>Loon</i>	L. Orr
1977	<i>Ghost</i>	R. Logan
1978	(Not awarded)	
1979	<i>Sunshine</i>	V. Kind
1980	<i>Aeolus</i>	R. Graham
1981	<i>Heather</i>	D. Davies
1982	<i>Cygnat</i>	R. Finta
1983	<i>Aeolus</i>	R. Graham
1984	<i>Ailanthus</i>	W. Grauer
1985	<i>Cherry Pi</i>	F. Marinaccio
1986	<i>Blaze</i>	R. LaBella
1987	<i>Rhapsody</i>	B. Nierenberg
1988	<i>Orion</i>	J. Ryan
1989	<i>Cherry Pi</i>	F. Marinaccio
1990	<i>Firewater II</i>	Baldwin/Crocker
1991	<i>Firewater II</i>	Baldwin/Crocker
1992	<i>Windshadow</i>	L. Costelloe
1993	<i>What Me Worry?</i>	J. Ryan
1994	<i>What Me Worry?</i>	J. Ryan

1995	<i>Mirage</i>	G. Schneller
1996	<i>Amethyst</i>	D. Davies
1997	<i>Dragon Fly</i>	J. Davis
1998	<i>Clipper</i>	P. Rendich
1999	<i>Clipper</i>	P. Rendich
2000	<i>Amethyst</i>	D. Davies
2001	<i>Redwing</i>	J. Morgan
2002	<i>Brokher</i>	A. Eppig
2003	<i>Full Circle</i>	H. Manko
2004	<i>Clipper</i>	P. Rendich
2005	<i>Brokher</i>	A. Eppig
2006	<i>Cherry Pi</i>	F. Marinaccio
2007	<i>Rettsie</i>	K. Padden
2008	<i>Brokher</i>	A. Eppig
2009	<i>Rettsie</i>	K. Padden
2010	<i>Full Circle</i>	H. Manko

SCHNUR TROPHY

1951	<i>Judy</i>	W. Hansen
1952	<i>Cirrus</i>	H. Chapman
1953	<i>Joyce</i>	D. Henderson
1954	<i>Triton</i>	P. Hildreth
1955	<i>Chiquita</i>	W. Cain
1956	<i>Moonshine</i>	R. Hayward
1957	<i>Chappy</i>	H. Chapman
1958	<i>Sea Rover</i>	R. Logan
1959	<i>Spindrift</i>	R. Ramsdell
1960	Not awarded	
1961	<i>Escape</i>	W. Palmer
1962	<i>Sea Rover</i>	R. Logan
1963	<i>Errant</i>	E. Seidenberg
1964	<i>Snookie</i>	R. Kent
1965	<i>Bay Bee</i>	J. Wragge
1966	<i>Halcyon</i>	R. Davis
1967	<i>Chico</i>	W. Braddon
1968	<i>Adelaide</i>	P. Wainwright
1969	<i>Nirvana</i>	J. Saxe
1970	<i>Sea Rover</i>	T. Hanaway
1971	<i>Jolly Jack</i>	J. Hollis
1972	<i>Hollandia</i>	J. Pless
1973	<i>Warlock</i>	S. DeLise
1974	<i>Valkyrie</i>	L. Cyr
1975	<i>Freewind</i>	R. Novak
1976	<i>Valkyrie</i>	L. Cyr
1977	<i>Argos</i>	R. Snyder
1978	<i>Glass Menagerie</i>	B. Kennedy
1979	<i>Strawberry Fields</i>	E. Sabbeth
1980	<i>Thunder Cloud</i>	A. Stanton
1981	<i>Windswept</i>	M. Marsa

SBCC Awards History

SCHNUR TROPHY (cont'd)

1982	<i>Betty</i>	W.Menger
1983	<i>Ladybug</i>	R.Rosenbusch
1992	<i>Slim</i>	Hamstra/Rendich
1993	<i>Last Fling</i>	T.Hangarter

SMITH TROPHY

1953	<i>Cutty Sark</i>	D.Norton
1954	<i>Reverie</i>	J.Young
1955	<i>Lorelei</i>	B.Lawrence
1956	<i>Lorelei</i>	B.Lawrence
1957	<i>Spindrift</i>	R.Tarr
1958	<i>Hispaniola</i>	E.Poor
1959	<i>Three Sisters</i>	F.Pallas
1960	<i>Morning Star</i>	H.G.Smith
1961	<i>Falcon</i>	A.Heckel
1962	<i>Pegasus</i>	J.Bruckner
1963	<i>Jeanne</i>	T.Hangarter
1964	<i>Syren</i>	J.Worden
1965	<i>Falcon</i>	A.Heckel
1966	<i>Fibre Tigre</i>	W.Stone
1967	<i>Broadbill</i>	W.Simonson
1968	<i>Ghost</i>	R.Logan
1969	<i>Panacea</i>	S.Herman
1970	<i>Orient Star</i>	W.Casazza
1971	<i>Falcon</i>	A.Heckel
1972	<i>Merry Ann</i>	W.Cook
1973	<i>Loon</i>	L.Orr
1974	<i>Sandpiper</i>	R.Nehring
1975	(no finishers)	
1976	<i>Merry Ann</i>	W.Cook
1977	<i>Slim</i>	H.Hamstra
1978	<i>Merry Ann</i>	W.Cook
1979	<i>Magic</i>	R.Sheppard
1980	<i>Heather</i>	D.Davies
1981	<i>Honyak</i>	J.Layton
1982	<i>Kiko</i>	G.Baldwin III
1983	<i>Curlew</i>	D.MacDonell III
1984	<i>Jeanne</i>	L.Deutsch
1985	<i>Curlew</i>	D.MacDonell III
1986	<i>Mirage</i>	G.Schneller
1987	<i>Amethyst</i>	D.Davies
1988	<i>Firewater II</i>	Baldwin/Crocker
1989	<i>White Squall</i>	M.Smith
1990	<i>Firewater II</i>	Baldwin/Crocker
1991	<i>What Me Worry?</i>	J.Ryan
1992	<i>Mirage</i>	G.Schneller
1993	<i>What Me Worry?</i>	J.Ryan
1994	<i>What Me Worry?</i>	J.Ryan
1995	<i>Dragon Fly</i>	J.Davis
1996	<i>Slim</i>	P.Rendich
1997	<i>Amethyst</i>	D.Davies

1998	<i>Amethyst</i>	D.Davies
1999	<i>Cherry Pi</i>	F.Marinaccio
2000	<i>Amethyst</i>	D.Davies
2001	<i>Cherry Pi</i>	F.Marinaccio
2002	<i>Brokher</i>	A.Eppig
2003	<i>Clipper</i>	P.Rendich
2004	<i>Ericsean</i>	K.Padden
2005	<i>Brokher</i>	A.Eppig
2006	<i>Brokher</i>	A.Eppig
2007	<i>Blaze</i>	R.LaBella
2008	<i>Ceol na Mara</i>	J.Morgan
2009	<i>Hooch</i>	Reichel/Kennedy
2010	<i>Full Circle</i>	H. Manko

SYMPATICO CUP

1963	<i>Kiddie Ketch</i>	W.Aubin
1964	<i>Spindrift</i>	R.Ramsdell
1965	<i>Extra Dry</i>	J.Davies
1966	<i>Pilgrim</i>	J.Berdolt
1967	<i>Spindrift</i>	R.Ramsdell
1968	<i>Pride</i>	F.Lyons
1969	<i>Pilgrim</i>	J.Berdolt
1970	<i>Valkyrie</i>	L.Cyr
1971	<i>Jolly Jack</i>	J.Hollis
1972	<i>Jolly Jack</i>	J.Hollis
1973	<i>B & B</i>	R.Hollis
1974	<i>Merri Mac</i>	B.MacGill
1975	<i>Unicorn</i>	L.Casey
1976	<i>Banshee</i>	P.Kelly
1977	<i>Ailanthus</i>	W.Grauer
1978	<i>Judi</i>	R.Van Tassel
1979	<i>C-Bob</i>	R.Coleman
1980	<i>Wild Rover</i>	B.Brownyard
1981	<i>Dauntless</i>	W.Lapp
1982	<i>Sweet It Is</i>	B.Nierenberg
1983	<i>Thunder Cloud</i>	J.Classen

CARY PEARSALL TROPHY

1993	<i>Cherry Pi</i>	F.Marinaccio
1994	<i>Mirage</i>	G.Schneller
1995	<i>Mirage</i>	G.Schneller
1996	<i>Ailanthus</i>	W.Grauer
1997	<i>Dragon Fly</i>	J.Davis
1998	<i>Clipper</i>	P.Rendich
2002	<i>Cherry Pi</i>	F.Marinaccio
2003	<i>Spirit</i>	K.Bogdan
2004	(not awarded)	
2005	<i>Brokher</i>	A.Eppig
2006	<i>Blaze</i>	R.LaBella
2009	<i>Brokher</i>	A.Eppig
2010	<i>Amethyst</i>	Davies / Eppig



2010 Holiday Party

2010 Holiday Party



SBCC Fleet - Sailing Auxiliaries

SAIL#	BOAT NAME	LAST NAME	RIG	HDCP	LOA	DRAFT	MODEL
	Ooops	M. Meyerson	Sloop		24'	4' 3"	Kramer 24
	Lil Patience	B. Rottkamp	Sloop		17'		O'Day
	Blue Skye	M. Smith	Sloop		33' 3"	4' 6"	Tartan
	Tuesday's Child	N. DeMarco	Sloop		20'	3' 3"	Pacific Seacraf
	Anna	J. Glynn	Sloop		19' 6"	2' 8"	Bristol
	Patricia Anne	J. Glynn	Cat		18'	1' 10"	Herreshoff cat
	Pearson Wanderer	S. McGlone	Sloop		30'	9' 6"	Pearson Wand
11	Merri Mac	B. MacGill	Yawl		32'	3' 6"	Endeavor
12	Fillbuster	D. Hyer	Sloop		30'	3' 6"	Morgan
15	Heart of Gold	F. Golder	Sloop		39' 9"	4' 9"	Gulfstar/Sailm
16	Margaret Gale	R. Van Tassel	Sloop		46'	5' 6"	Tartan
18	St. Michael	R. Lockett	Sloop		35' 9"	4' 6"	Hunter Leg 35
22	Dream Voyager	J. Bieselin	Sloop		34' 5"	3' 11"	Tartan 3400
33	Midnight Sun	D. Glinski	Ketch		33' 2"	4' 1"	Nauticat
37	De Ja Vu II	P. Revella	Sloop		42'	5' 3"	Pearson
46	Summerhome II	L. Novak	Sloop		41'	5'	Hunter
47	Runaway	W. Danilczyk	Cat		47'	4'	Conser 47
48	Fiona	E. Forsyth	Cutter		42'	6'	Westsail
57	Lettuce Buy	M. Romaine	Sloop		29' 11"	3' 4"	Tartan
60	Fun Sway	R. Troy	Sloop		38' 4"	4' 7"	Beneteau 3
62	Windswept	B. McLoughlin	Sloop		32'	4' 6"	Ericson
67	Tuono	P. Ljungqvist	Sloop		26' 11"	2' 11"	O'Day
73	Silver Cloud	D. Marzocco	Sloop		32' 2"	4' 2"	O'Day 322
76	Spirit	K. Bogdan	Sloop		38'	4'	Morgan
77	Charisma	R. Parker	Sloop		32'	3' 6"	Bristol
78	Buccaneer	A. Pearson			35'	4' 3"	Morgan
81	Classy Lady	P. King	Sloop		33'	5'	Tartan
89	Habanero	S. Montana	Sloop		32'	3' 8"	Sabre
96	Astarte	W. Kleisler	Sloop		27'	3' 2"	Tartan 27
103	Rettsie	K. Padden	Sloop		38'	4' 11"	Ericson
112	Leprechaun	D. Connor	Sloop		30'	3' 6"	Wanderer
119	Free Spirit	R. DeSimone	Sloop		32'	3' 4"	O'Day
119	Grace	R. Holzmacher	Cat		24'	2'	Atlantic City
120	Lorna Doone	R. Van Nostrand	Sloop		33'	3'	S&S
121	Sundowner	K. Boyle	Sloop		31'	3' 6"	Bombay Clipp
122	Wanderlust	R. Holzmacher	Sloop		24'	2' 10"	Dolphin 24
124	Cee-J2	C. Conger	Ketch		42'	5'	Whitby
125	Vi	A. Yaxis	Ketch		28'	3' 6"	H-28
130	Vixen	F. Peter	Ketch		36' 5"	4' 6"	Pearson 365
131	Gail Wind	R. Paloscio	Sloop		32'	4'	Morgan
137	Redwing	J. Fifield	Sloop		30'	4' 8"	C&C
144	Njord	S. Eilbeck	Sloop		37'	4' 3"	Tartan
151	Good Wind	H. Goodwin	Sloop		31' 1"	3' 6"	Bristol
156	Grace	M. DeMarco	Sloop		39'	4' 6"	Irwin Citation
161	Miss Liberty II	N. Sherman	Cutter		26'	2' 8"	Island Packet
181	Esprit	B. Ludlum	Sloop		31'	3' 11"	Pearson 31
185	Intrepid	K. Goodwin	Sloop		28'	4'	Tartan
190	Saga	G. Dugoniths	Sloop		32'	4' 2"	O'Day 322
201	Our Time	T. Chambers	Cutter		30'	3' 8"	Island Packet
203	Shadow	C. Margeson	Sloop		41'	4' 2"	Morgan
206	Grollia Dust	L. Becker	Sloop		20'	3' 7"	Holder 20
220	Merry Ann	W. Cook	Sloop		30'		C&C

SBCC Fleet - Sailing Auxiliaries

SAIL#	BOAT NAME	LAST NAME	RIG	HDCP LOA	DRAFT	MODEL
227	H2OT	T. Drossos	Sloop	29'	5' 3"	C&C
239	Magic Dragon	D. Metznik	Cutter	30'	4' 6"	Cape Dory
242	Floriana	C. Grotoli	Cutter	42'	4' 6"	Kanter
256	Glory	J. Westpfahl	Schooner	39'	3'	Hermann LJ32
269	Counterpoint	J. Becker	Ketch	36' 6"	4' 6"	Pearson
295	Tanzanite	J. Greco	Sloop	29' 6"	4'	Hunter
305	Incredible	D. Larmor	Sloop	26'	2' 4"	Bombay Expr
308	Cu Mara	L. McMahon	Sloop	33'	4' 6"	Endeavour
310	Elaine 'n' Me	A. Sherman	Sloop	31'	4'	Hunter 310
329	Hooch	B. Kennedy	Sloop	24'	5'	Melges
329	Hooch	J. Reichel	Sloop	24'	4' 11"	Melges-24
331	Island Breeze	K. Duschenchuk	Sloop	33' 11"	2' 10"	Benetau 331
336	Jayne Heir	J. Tinelli	Sloop	34'	4'	Hunter 34
340	Silent P	E. Pshedesky	Sloop	33' 6"	4' 6"	Hunter
347	Aeolus	D. Graham	Sloop	28'	3' 3"	O'Day 28
354	Becky	C. Becker	Sloop	30'	3' 6"	O'Day
360	Wild Blue II	A. Mülle'	Ketch	30'	4'	Allied Seawind
361	Peregrine	T. Davison	Sloop	28' 6"	4' 4"	Sabre Mk II
381	Lady Jane	D. Glinski	Sloop	23'	3' 9"	Ranger
390	Forewind	G. Roth	Sloop	35' 5"	4'	Bristol 35.5
395	Bionator	M. Goodman	Sloop	29'	3' 3"	C&C
407	Annie B	W. Wheeler	Sloop	24'	4'	C&C
416	Andiamo	J. Amato	Sloop	24' 10"	2' 6"	O'Day 25
421	Amethyst	D. Davies	Sloop	27'	4' 11"	J-27
430	City Girl	J. Harris	Sloop	37' 5"	4' 11"	Hunter
432	Solitude	C. Schaefer	Sloop	30'	5' 5"	Irwin
443	Whisper	R. Sherwood	Sloop	29' 9"	3' 6"	Bristol
445	Sloop Rick B	R. Bishop	Sloop	31'	4'	Hunter
459	Forager	P. Kramer	Yawl	35'	3' 9"	Pearson
467	Miss Gracie	L. Schaefer	Yawl	35'	3' 9"	Pearson
470	Brass Ring	A. Furey	Sloop	27' 8"	4' 6"	Bristol 27.7
529	Sugar Magnolia	P. Capitain	Sloop	25'	3' 10"	C&C
536	Mirage	G. Schneller	Sloop	26'	4'	Pearson
545	Thirst-N-Howl III	J. Corcoran	Sloop	21'	1' 6"	Credlock
554	Tir-nan-Oge	C. Harbert	Sloop	23'	3' 9"	O'Day Tempes
581	della.calm	D. Bucher	Sloop	27' 6"	2' 6"	Island Packet
621	Moonraker	R. Martorana	Sloop	35' 5"	3' 9"	Bristol
641	Laurie Jean	G. Messina	Sloop	30'	4' 4"	Catalina
655	Glenbeigh	T. Burke	Sloop	25' 2"	4' 3"	C&C MKII
664	Warlock	S. DeLise Jr.	Sloop	25'	4' 3"	C&C
675	Shoot'n the BreezeR	R. Czach	Sloop	35'	4'	Hallberg Rassy
702	Nirvana	P. Halpin	Sloop	42'	4' 10"	Catalina
712	Mistress	E. Hopkins	Sloop	27' 2"	4' 3"	Cherubini/Hunt
716	Karma	D. McMillan	Sloop	25'	4' 3"	C&C
717	Broadbill	M. Warsaw	Sloop	30'	3' 6"	Wanderer
719	Flying Wasp	A. Hemingway	Sloop	29'	5' 3"	C&C 29, Mrk 1
725	Blaze	R. LaBella	Sloop	30'	4' 6"	C&C
726	White Water	D. Crocker	Sloop	25'	4' 3"	C&C 25 Mrk II
726	Icewater	K. Brink	Sloop	25'	4' 6"	C&C 25
732	Busman's Holiday	S. Brice	Sloop	40'	4' 11"	O'Day
735	Liquid Courage	K. Regan	Sloop	25'	4' 3"	C&C 25 Mrk II
738	Compass Rosie	G. Gravina	Sloop	34'	1' 6"	Gemini MC cat

SBCC Fleet - Sailing Auxiliaries

SAIL#	BOAT NAME	LAST NAME	RIG	HDCP LOA	DRAFT	MODEL
741	Her Diamond EarringsJ.	Klein	Sloop	25'		C&C Mark II
756	Anjolie	D. Egolf	Sloop	30'	4' 9"	Newport MKII
759	Brokher	A. Eppig	Sloop	25'	4'	C&C
822	Sunshine	P. Kind	Sloop	25'	3' 8"	C&C
890	Endeavor	C. Folz	Sloop	33'	5'	Luders 33
909	Amblin	M. Miligi	Sloop	30'	3' 6"	Pearson
913	USA 913	D. Hyer	Sloop	22'	3' 8"	J22
1020	Naiaid	R. Tesoro	Sloop	34'	4' 2"	Catalina
1024	Egret	D. Purnhagen	Cat-Ketch	24'	1' 8"	Morris Bahama
1053	Class Sea M	J. Fenske	Sloop	36'	4' 2"	Catalina
1121	Ailanthus	W. Grauer	Sloop	26'	4'	Pearson
1136	Dodona	W. Flynn	Sloop	39'	4' 6"	Irwin
1156	JT 9D	P. Rendich		24'	5'	Melges 24
1203	Fox	V. Piazza	Sloop	30'	3' 6"	Pearson Wand
1227	Kickin' Back	M. O'Connell	Sloop	34'	4' 6"	Tartan
1260	Silhouette	T. Gotard	Sloop	33'	3' 5"	Swiftsure
1276	Chaconne	K. Pawloski	Sloop	27'	3' 11"	Ericson
1395	Lady Barbara	J. Nielsen	Ketch	37'	4' 6"	Endeavor
1419	FireWater	C. Hartnett	Sloop	25'	4' 4"	C&C 25
1442	Ranger	R. Malinka	Sloop	25'	3' 6"	Cape Dory
1486	Back Yard Gear	P. Sherman	Sloop	24'	4'	J24
1555	Ceol na Mara	J. Morgan	Sloop	30'	3' 4"	Tartan 3000
1855	Carefree	J. Trotta	Yawl	35'	3' 10"	Allied Seabree
1858	Belle Free	B. Baxter	Sloop	29' 9"	3' 6"	Bristol
2224	Pandemonium	G. Sebounhian	Sloop	29'	4'	C&C
2484	Blue Tango	W. Kachel	Sloop	39'	4' 8"	Pearson
2712	Carolina	A. Davies	Sloop	30'	3' 6"	Wanderer
2728	Loon	M. Duffy	Yawl	35'	3' 9"	Pearson
2802	Captain's Lady	C. Carlberg	Sloop	30'	3' 11"	O'Day
2808	Gliding Gull	D. Van Nostrand	Sloop	31'	3' 3"	C&C
3776	Blue Fin	J. Mullarkey	Sloop	30'	4' 4"	Catalina
4201	Eagle's Wings	J. Mattera	Sloop	35' 5"	3' 9"	Bristol
4271	Chanson	J. Dunnells	Sloop	30'	3' 6"	Morgan
4337	Rowdy	G. Diliberto	Sloop	24'		J24
4583	Wind Song	H. Kolin	Sloop	27'	4'	Catalina
4817	South Bound	J. Bartow	Sloop	26'	4'	Pearson 26
5345	Mareva	D. Schlossberg	Sloop	29' 11"	3' 6"	Catalina 30
5538	Phoebe Rose	D. Tedesco	Sloop	30'	4'	Catalina
5861	Dragon Fly	J. Davis	Sloop	25'	4' 3"	C&C
5861	Dragon Fly	C. Toner	Sloop	25'		C&C
6217	Lady Ann	R. Mourino	Sloop	27'	3' 5"	Catalina
6744	Lucky Bark III	T. O'Connell	Sloop	25'	4'	C&C
7700	Absolut	S. Penny	Sloop	25' 11"	5'	S-2
8754	Stealingtime	C. Schaefer	Sloop	35'	4' 11"	Ericson Mrk III
10196	Dragon	D. Gardner	Sloop	35'	3' 9"	Pearson
10987	Drumshanbo	B. Pittman	Sloop	35'	4' 11"	Ericson
11185	Maggie Lee	L. Christiansen	Sloop	34' 8"	4' 2"	C&C 35-3
11933	Rum-Line	P. Sullivan	Sloop	25'	3' 10"	C&C
11976	Bay Breeze	E. King	Sloop	27' 4"	4' 3"	C&C
13642	Whitecap	J. Holst	Sloop	26'	4'	Pearson
14364	Radio Flyer	R. LaTorre	Sloop	25'	3' 10"	C&C
14364	Radio Flyer	S. Vine	Sloop	25'	3' 8"	C&C 25 MK1

SBCC Fleet - Sailing Auxiliaries

SAIL#	BOAT NAME	LAST NAME	RIG	HDCP	LOA	DRAFT	MODEL
14423	Cherry Pi	F. Marinaccio	Sloop		25'	3' 10"	C&C
22222	Blue Horizon	R. Daisley	Sloop		38'	3' 9"	Morgan
30947	Arcadia	R. Sheppard	Sloop		41' 1"	4' 6"	Bristol
31880	Courageous	J. Einsetler	Sloop		36'	4' 8"	Morgan-4CB
32748	Summer Wind	R. Larson	Sloop		38'	4' 3"	Saber
33855	Heritage	S. Woodrick	Sloop		38'	4' 5"	Little Harbor
33978	Sigrid	J. Pallotta	Sloop		37'	4' 3"	Tartan
40999	Lucky Frog	R. Schwartz	Sloop		27'	4' 9"	J80
42281	Jam V	J. Dudek	Sloop		35' 5"	4' 6"	Hunter Legend
42370	Silver Bullet	J. Reichel	Sloop		27' 6"	5'	J-27
42371	Naughty Dog	J. Reichel	Sloop		25'	4' 4"	C&C
42380	Kariana	D. Krug	Sloop		38'	4' 3"	Sabre
50376	Emma	C. Drossos	Sloop		24'	4'	C&C
51558	Hydra	L. Braile	Sloop		32' 5"	6' 3"	C&C
51841	Full Circle	H. Manko	Sloop		35'	4' 10"	Tartan3500
52066	Jacqueline IV	R. Forman	Sloop		42' 9"	4' 9"	Hinckley
70707	V' Secret	J. Stryka	Sloop		30' 11"	3' 11"	Pearson

SBCC Fleet - Power Vessels

BOAT NAME	LAST NAME	TYPE	LOA	DRAFT	MODEL
	C. Beach	Power	25'		SeaRay Sundancer
Alibi	N. Rising	Power	40'	2' 6"	Chris Craft-SeaSkiff
Annette Too	A. Eppig	Power	36' 8"	3' 5"	Chris Craft
Basherter	M. Simon	Power	54'	5'	Trumpy 1947
Betty M	P. Savoca	Power	43'	4' 6"	Mainship 43
Celebration	J. Sicinski	Power	47'	3' 6"	Bayliner 1996
Citron	S. Penny	Power	23'		Sport Craft
Colleen Rose	C. Harbert	Power	35'	2' 5"	Ocean 35
Costie	C. LaValle	Power	26'		USCG Motor Skif
Dragon's Power	R. Vetter	Power	36' 7"	3' 1"	Carver/Mariner
Free Spool	V. Ranieri	Power	32'	2' 6"	Topaz
Galatea	G. Holwell	Power	32'	4'	Grand Banks
Gracie Rose	R. LaTorre	Power	28'	3' 6"	Flyepoint/BHM
Impulse	M. Simon	Power	26'	3' 6"	Crosby Tug Boat 1974
Lady Barbara III	J. Levitsky	Power	34'	3' 3"	Mainship Pilot
Mako	R. Sheppard	Power	23'		Mako
Simply Devine	T. Devine	Power	23'		Boston Whaler

SBCC Yachts by Name

YACHT	SAIL #	OWNER	YACHT	SAIL #	OWNER
Absolut	7700	S. Penny	Dragon Fly	5861	C. Toner
Aeolus	347	D. Graham	Dragon's Power		R. Vetter
Ailanthus	1121	W. Grauer	Dream Voyager	22	J. Bieselin
Alibi	Power	N. Rising	Drumshanbo	10987	B. Pittman
Amblin	909	M. Miligi	Eagle's Wings	4201	J. Mattera
Amethyst	421	D. Davies	Egret	1024	D. Purnhagen
Andiamo	416	J. Amato	Elaine 'n' Me	310	A. Sherman
Anjolie	756	D. Egolf	Emma	50376	C. Drossos
Anna		J. Glynn	Endeavor	890	C. Folz
Annie B	407	W. Wheeler	Esprit	181	B. Ludlum
Arcadia	30947	R. Sheppard	Filibuster	12	D. Hyer
Astarte	96	W. Kleisler	Fiona	48	E. Forsyth
Back Yard Gear	1486	P. Sherman	FireWater	1419	C. Hartnett
Basherter	Power	M. Simon	Floriana	242	C. Grottoil
Bay Breeze	11976	E. King	Flying Wasp	719	A. Hemingway
Becky	354	C. Becker	Forager	459	P. Kramer
Belle Free	1858	B. Baxter	Forewind	390	G. Roth
Betty M	Power	P. Savoca	Fox	1203	V. Piazza
Bionator	395	M. Goodman	Free Spirit	119	R. DeSimone
Blaze	725	R. LaBella	Free Spool	Power	V. Ranieri
Blue Fin	3776	J. Mullarkey	Full Circle	51841	H. Manko
Blue Horizon	22222	R. Daisley	Fun Sway	60	R. Troy
Blue Skye		M. Smith	Gail Wind	131	R. Paloscio
Blue Tango	2484	W. Kachel	Galatea	Power	G. Holwell
Brass Ring	470	A. Furey	Glenbeigh	655	T. Burke
Broadbill	717	M. Warsaw	Gliding Gull	2808	D. Van Nostrand
Brokher	759	A. Eppig	Glory	256	J. Westpfahl
Buccaneer	78	A. Pearson	Good Wind	151	H. Goodwin
Busman's Holiday	732	S. Brice	Grace	156	M. DeMarco
Captain's Lady	2802	C. Carlberg	Grace	119	R. Holzmacher
Carefree	1855	J. Trotta	Gracie Rose	Power	R. LaTorre
Carolina	2712	A. Davies	Grollia Dust	206	L. Becker
Cee-J2	124	C. Conger	H2OT	227	T. Drossos
Celebration	Power	J. Sicinski	Habanero	89	S. Montana
Ceol na Mara	1555	J. Morgan	Heart of Gold	15	F. Golder
Chaconne	1276	K. Pawloski	Her Diamond Earrings	741	J. Klein
Chanson	4271	J. Dunnells	Heritage	33855	S. Woodrick
Charisma	77	R. Parker	Hooch	329	B. Kennedy
Cherry Pi	14423	F. Marinaccio	Hydra	51558	L. Braile
City Girl	430	J. Harris	Icewater	726	K. Brink
Class Sea M	1053	J. Fenske	Incredible	305	D. Larmor
Classy Lady	81	P. King	Intrepid	185	K. Goodwin
Compass Rosie	738	G. Gravina	Island Breeze	331	K. Duschenchuk
Costie	Power	C. LaValle	Jacqueline IV	52066	R. Forman
Counterpoint	269	J. Becker	Jam V	42281	J. Dudek
Courageous	31880	J. Einsetler	Jayne Heir	336	J. Tinelli
Cu Mara	308	L. McMahon	JT 9D	1156	P. Rendich
De Ja Vu II	37	P. Revella	Kariana	42380	D. Krug
della.calm	581	D. Bucher	Karma	716	D. McMillan
Dodona	1136	W. Flynn	Kickin' Back	1227	M. O'Connell
Dragon	10196	D. Gardner	Lady Ann	6217	R. Mourino
Dragon Fly	5861	J. Davis	Lady Barbara III	Power	J. Levitsky



SBCC Yachts by Name

YACHT	SAIL #	OWNER	YACHT	SAIL #	OWNER
Lady Barbara	1395	J. Nielsen	Spirit	76	K. Bogdan
Laurie Jean	641	G. Messina	St. Michael	18	R. Lockett
Leprechaun	112	D. Connor	Stealingtime	8754	C. Schaefer
Lettuce Buy	57	M. Romaine	Sugar Magnolia	529	P. Capitain
Lil Patience		B. Rottkamp	Summer Wind	32748	R. Larson
Liquid Courage	735	K. Regan	Summerhome II	46	L. Novak
Loon	2728	M. Duffy	Sundowner	121	K. Boyle
Lorna Doone	120	R. Van Nostrand	Sunshine	822	P. Kind
Lucky Bark III	6744	T. O'Connell	Tanzanite	295	J. Greco
Lucky Frog	40999	R. Schwartz	Thirst-N-Howl III	545	J. Corcoran
Maggie Lee	11185	L. Christiansen	Tir-nan-Oge	554	C. Harbert
Magic Dragon	239	D. Metznik	Tuesday's Child		N. DeMarco
Mako	Power	R. Sheppard	Tuono	67	P. Ljungqvist
Mareva	5345	D. Schlossberg	USA 913	913	D. Hyer
Margaret Gale	16	R. Van Tassel	V' Secret	70707	J. Stryka
Merri Mac	11	B. MacGill	Vi	125	A. Yaxis
Merry Ann	220	W. Cook	Vixen	130	F. Peter
Midnight Sun	33	D. Gilinski	Warlock	664	S. DeLise Jr.
Mirage	536	G. Schneller	Whisper	443	R. Sherwood
Miss Gracie	467	L. Schaefer	White Water	726	D. Crocker
Miss Liberty II	161	N. Sherman	Whitecap	13642	J. Holst
Mistress	712	E. Hopkins	Wild Blue II	360	A. Muller
Moonraker	621	R. Martorana	Wind Song	4583	H. Kolin
Naiad	1020	R. Tesoro	Windswept	62	B. McLoughlin
Naughty Dog	42371	J. Reichel			
Nirvana	702	P. Halpin			
Njord	144	S. Eilbeck			
Ooops		M. Meyerson			
Our Time	201	T. Chambers			
Pandemonium	2224	G. Sebounhian			
Pearson Wanderer		S. McGlone			
Peregrine	361	T. Davison			
Phoebe Rose	5538	D. Tedesco			
Radio Flyer	14364	R. LaTorre			
Radio Flyer	14364	S. Vine			
Ranger	1442	R. Malinka			
Redwing	137	J. Fifield			
Rettsie	103	K. Padden			
Rowdy	4337	G. Diliberto			
Rum-Line	11933	P. Sullivan			
Runaway	47	W. Danilczyk			
Saga	190	G. Dugoniths			
Shadow	203	C. Margeson			
Shoot'n the Breeze	675	R. Czach			
Sigrid	33978	J. Pallotta			
Silent P	340	E. Pshedsky			
Silhouette	1260	T. Gotard			
Silver Bullet	42370	J. Reichel			
Silver Cloud	73	D. Marzocco			
Simply Devine	Power	T. Devine			
Sloop Rick B	445	R. Bishop			
South Bound	4817	J. Bartow			



In Memoriam

Lynn Kondor
Ronald LaValle

The sunset at the end of day —

*At night a million stars in the sky,
Safe anchorage in an island's lee*

*And always there would be
Fair winds and a following sea*

CD Williams



Yearbook Committee Message

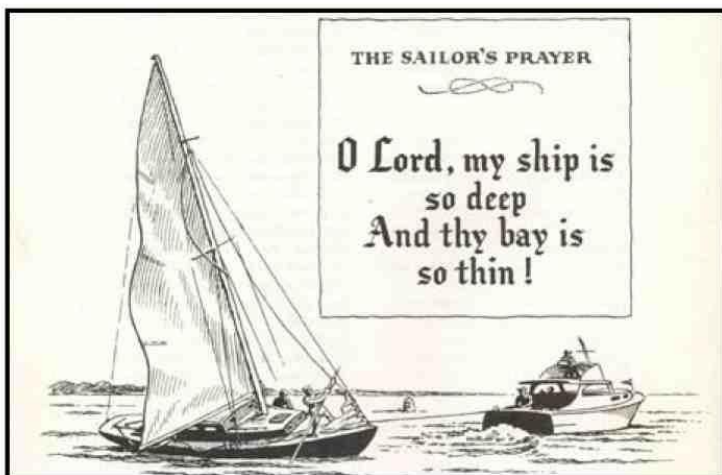
**The events recorded here are made possible
by the South Bay Cruising Club volunteers.**

This book is dedicated to them.



*A million words and a thousand pictures
could not begin to tell the story of our Club,
but it is our privilege to be allowed to try.*

SBCC 2011 Yearbook Committee



This year the South Bay Cruising Club is celebrating 60 years of promoting cruising and racing on the Great South Bay and nearby waters. This was the original intent of the founders of our club and after 60 years, we still use this guideline to shape the direction and goals for each New Year.

As the club's Historian, I had the opportunity to review our history through the collection of yearbooks that have chronicled the happenings and events from 1951 to the present. There have been some noticeable changes that I would like to share with you.

Prior to 1965, a majority of the boats were made of wood. If you wanted a new boat, you would select the plans of a marine architect that tickled your fancy. Then you would take the plans to a boat builder with any changes you wanted to include, and after a period of anticipation and waiting, your boat would be ready to be launched.

In the mid 60's, boats from the factories of Pearson, O'Day, Morgan and Catalina showed up on the Bay. They were a new breed -- made of a material from a laboratory; the material was called "fiberglass." It was lighter, required less maintenance and was more affordable to many people (or so it seemed).

At that time very few of the club boats had the equipment that now dresses our yachts. A VHF was not common on most of the sailboats; and thus, if you needed to indicate that you were in distress to a nearby member, you would turn your burgee upside down and hope your gesticulations would be noticed. A GPS, radar and all our electronic gadgets could only be found in our dreams.

Although some things may have changed, such as our equipment or the names of rendezvous points (Clam Pond, Old Inlets, Whirlpool Point, Secret Harbor), the one common thread that continues to connect us with our beginnings is the friendship and fun that has always been the heart of the SBCC.

Tom Gotard, SBCC Historian

INTERNATIONAL CODE FLAGS AND PENNANTS

<p>A </p> <p>B </p> <p>C </p> <p>D </p> <p>E </p> <p>F </p> <p>G </p> <p>H </p> <p>I </p> <p>J </p> <p>K </p>	<p>L </p> <p>M </p> <p>N </p> <p>O </p> <p>P </p> <p>Q </p> <p>R </p> <p>S </p> <p>T </p> <p>U </p> <p>V </p>	<p>W </p> <p>X </p> <p>Y </p> <p>Z </p> <p>REPEATERS</p> <p>First Repeater </p> <p>Second Repeater </p> <p>Third Repeater </p> <p>CODE AND ANSWERING PENNANT</p> <p></p>	<p>NUMERAL PENNANTS</p> <p>1 </p> <p>2 </p> <p>3 </p> <p>4 </p> <p>5 </p> <p>6 </p> <p>7 </p> <p>8 </p> <p>9 </p> <p>0 </p>
---	---	--	---